

# CERTIFICATE OF LOCATION OF GOVERNMENT CORNER

County of Anoka State of Minnesota

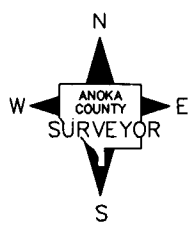
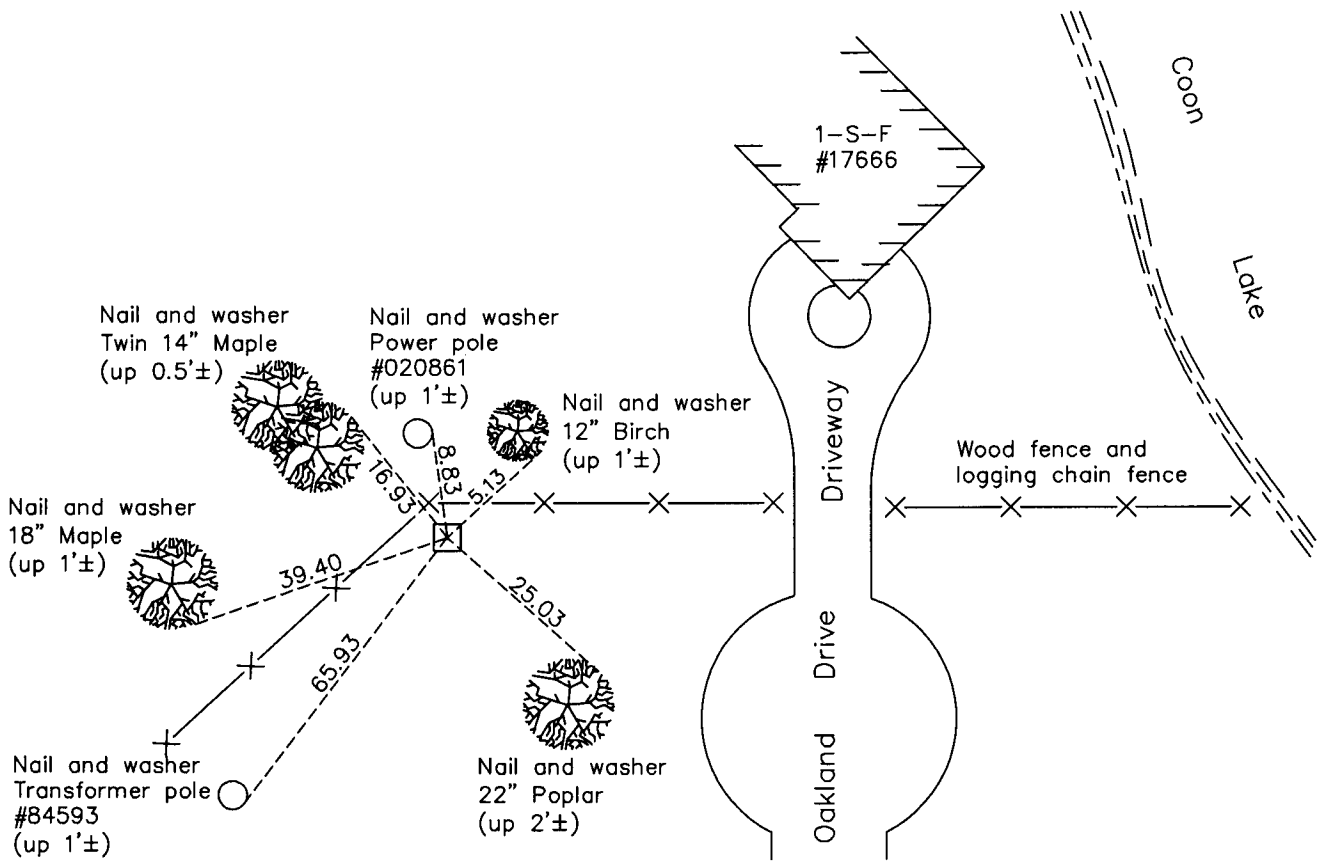
NW Corner of NE1/4 of SE1/4 Corner of Sec. 3 Township 32 Range 23

On the 20th day of July, 1966, the described corner was evidenced by a concrete monument

and to perpetuate the location of said corner, at the exact location thereof, a permanent marker was placed consisting of the same concrete monument

AND on the 25th day of April, 2011, said permanent marker was found with the top broken. Cut top of monument flat (up 0.3'±) and cut 'X' in top with a punch mark and updated ties.

Updated reference ties are as shown below.



N.A.D. 1983 Coordinates (1996 Adjustment)

County Project Coordinates	
Northing	193231.0115
Easting	520037.6020
Date	N/A

Revision Date 8/29/11

I hereby certify that this United States public land survey monument record is correct and complete to the best of my knowledge and belief.

*Larry D. Hoium* Date 8/29/11

Larry D. Hoium, Anoka County Surveyor  
Minnesota License Number 18165