

# CERTIFICATE OF LOCATION OF GOVERNMENT CORNER

County of Anoka

State of Minnesota

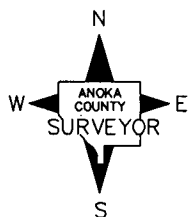
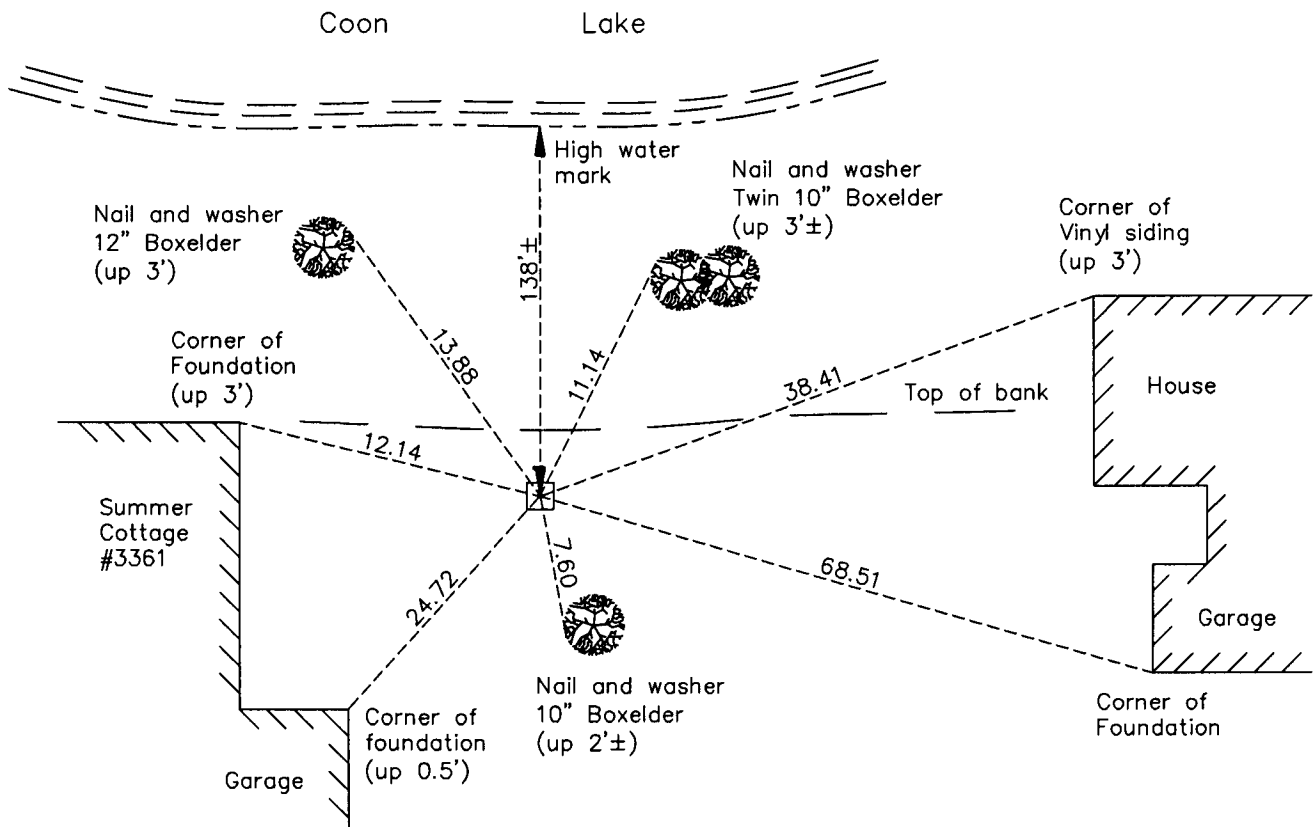
## Meander Corner of Sec. 3 Township 32 Range 23 (on east line of section)

On the 8th day of July, 1964, the described corner was evidenced by a concrete monument

and to perpetuate the location of said corner, at the exact location thereof, a permanent marker was placed consisting of the same concrete monument up 0.5'±

AND on the 6th day of April, 2011, said permanent marker was found and the ties were updated. The bank is eroding on the north side of monument.

Updated reference ties are as shown below.



Revision Date  
8/30/11

N.A.D. 1983 Coordinates  
(1996 Adjustment)

County Project Coordinates	
Northing	<u>192561.8900</u>
Easting	<u>521325.5158</u>
Date	<u>1/03/02</u>

I hereby certify that this United States public land survey monument record is correct and complete to the best of my knowledge and belief.

*Larry D. Hoium* Date 8/30/11

Larry D. Hoium, Anoka County Surveyor  
Minnesota License Number 18165