

CERTIFICATE OF LOCATION OF GOVERNMENT CORNER

County of Anoka

State of Minnesota

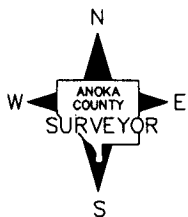
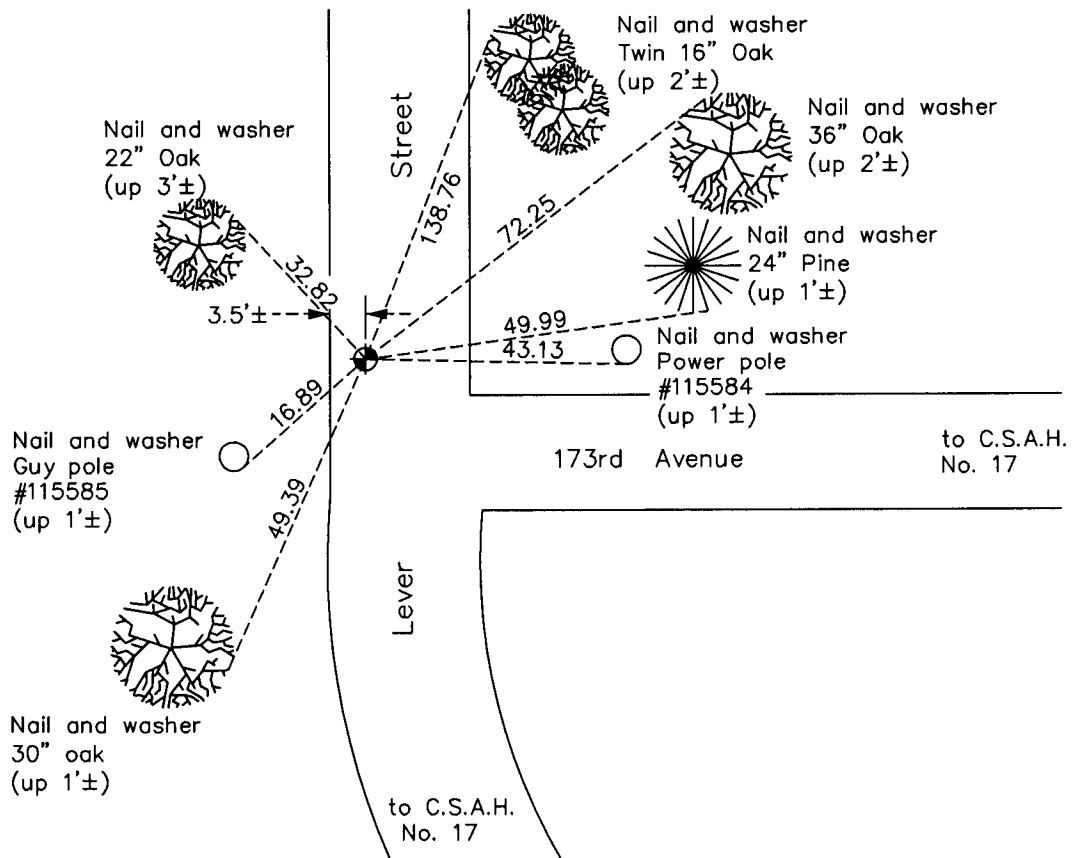
South $\frac{1}{4}$ Corner of Sec. 1 Township 32 Range 23

On the 21st day of June, 1961, the described corner was evidenced by a $\frac{3}{4}$ " iron pipe

and to perpetuate the location of said corner, at the exact location thereof, a permanent marker was placed consisting of a cast iron monument

AND on the 4th day of April, 2011, said permanent marker was found and the ties
were updated

Updated reference ties are as shown below.



Revision Date
8/31/11

N.A.D. 1983 Coordinates
(1996 Adjustment)

County Project Coordinates	
Northing	190627.7364
Easting	529409.2618
Date	8/07/96

I hereby certify that this United States public land survey monument record is correct and complete to the best of my knowledge and belief.

Larry D. Hoium Date 8/31/11

Larry D. Hoium, Anoka County Surveyor
Minnesota License Number 18165