

CERTIFICATE OF LOCATION OF GOVERNMENT CORNER

County of Anoka

State of Minnesota

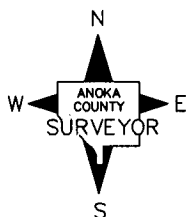
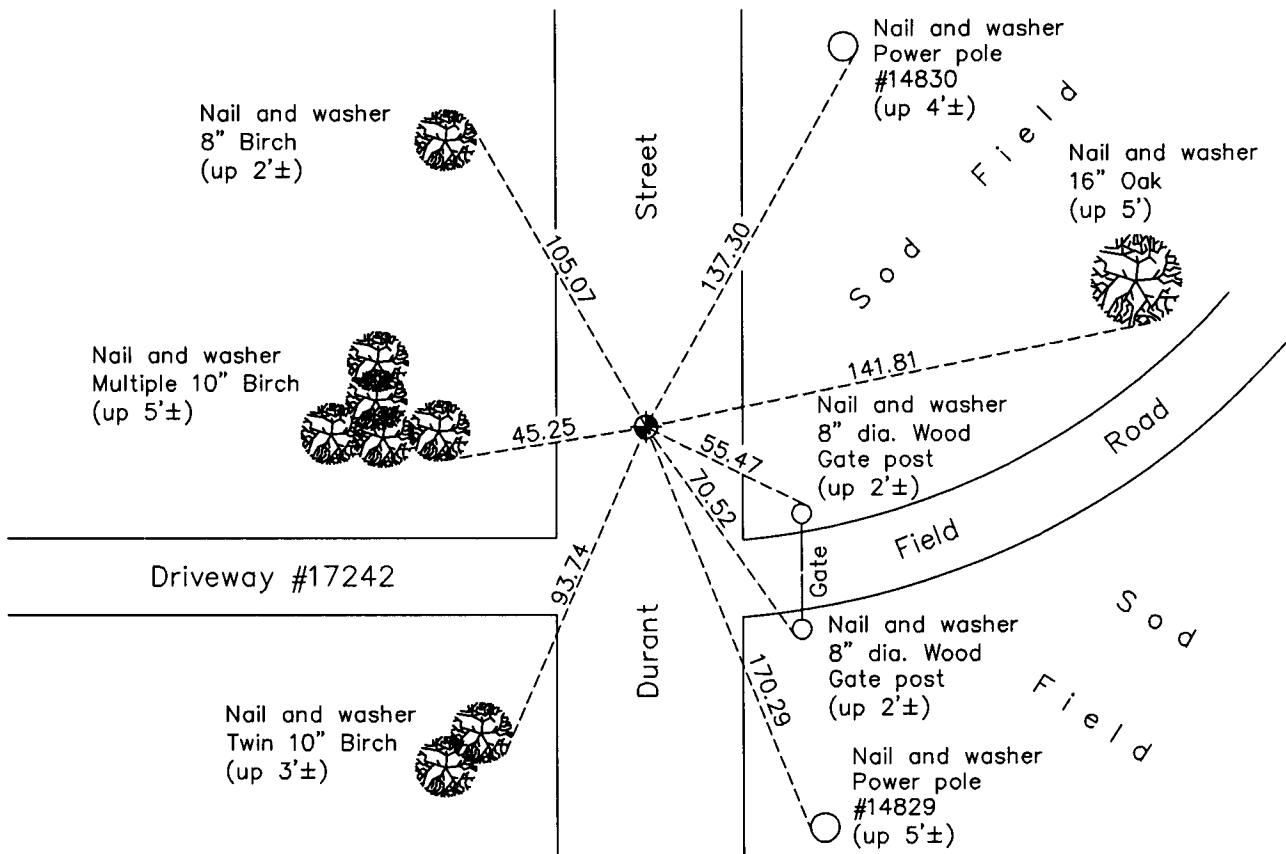
Southwest Corner of Sec. 1 Township 32 Range 23

On the 7th day of September, 1966, the described corner was evidenced by area resurvey

and to perpetuate the location of said corner, at the exact location thereof, a permanent marker was placed consisting of a cast iron monument down 4'± with a cast iron monument on top

AND on the 4th day of May, 2011, said permanent marker was found and the ties
were updated

Updated reference ties are as shown below.



Revision Date

8/31/11

N.A.D. 1983 Coordinates
(1996 Adjustment)

County Project Coordinates	
Northing	<u>190782.6037</u>
Easting	<u>526807.6809</u>
Date	<u>8/31/00</u>

I hereby certify that this United States public land survey monument record is correct and complete to the best of my knowledge and belief.

Larry D. Hoium Date 8/31/11

Larry D. Hoium, Anoka County Surveyor
 Minnesota License Number 18165