

CERTIFICATE OF LOCATION OF GOVERNMENT CORNER

County of Anoka

State of Minnesota

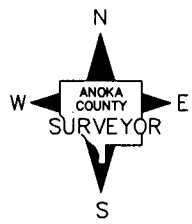
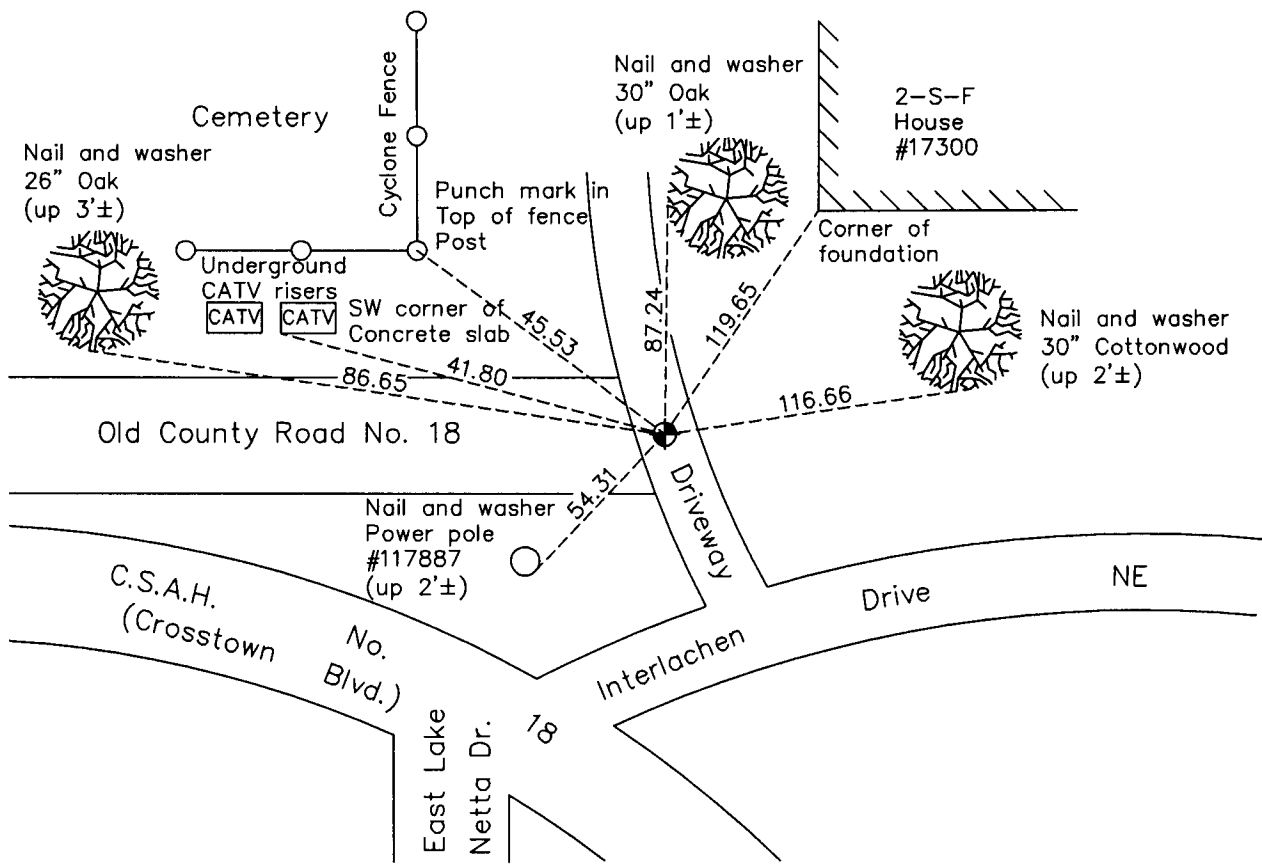
South 1/4 Corner of Sec. 3 Township 32 Range 23

On the 22nd day of December, 1960, the described corner was evidenced by a concrete monument

and to perpetuate the location of said corner, at the exact location thereof, a permanent marker was placed consisting of a cast iron monument down 0.5'±

AND on the 12th day of April, 2011, said permanent marker was found and the ties were updated

Updated reference ties are as shown below.



Revision Date
8/31/11

N.A.D. 1983 Coordinates
(1996 Adjustment)

| County Project Coordinates | |
|----------------------------|--------------------|
| Northing | <u>190645.8330</u> |
| Easting | <u>518746.4062</u> |
| Date | <u>1/03/02</u> |

I hereby certify that this United States public land survey monument record is correct and complete to the best of my knowledge and belief.

Larry D. Hoium Date 8/31/11

Larry D. Hoium, Anoka County Surveyor
Minnesota License Number 18165