

CERTIFICATE OF LOCATION OF GOVERNMENT CORNER

County of Anoka

State of Minnesota

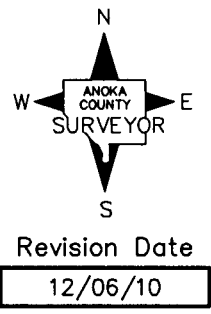
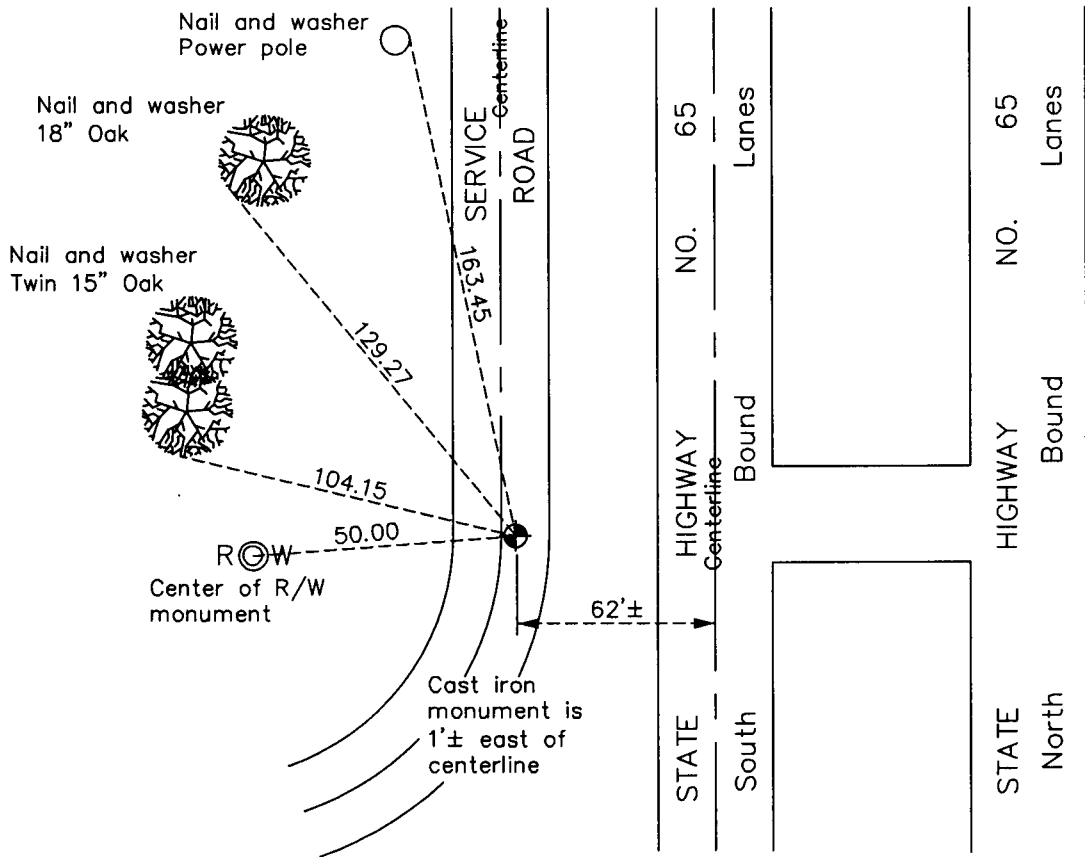
North 1/4 Corner of Sec. 8 Township 32 Range 23

On the 4th day of September, 1969, the described corner was evidenced by a granite monument

and to perpetuate the location of said corner, at the exact location thereof, a permanent marker was placed consisting of a cast iron monument

AND on the 15th day of December, 2005, said permanent marker was replaced with a new cast iron monument on top of granite monument and the ties were updated

Updated reference ties are as shown below.



N.A.D. 1983 Coordinates
(1996 Adjustment)

County Project Coordinates	
Northing	190822.8065
Easting	508161.9022
Date	12/12/02

I hereby certify that this United States public land survey monument record is correct and complete to the best of my knowledge and belief.

Larry D. Hoium Date 12/06/10

Larry D. Hoium, Anoka County Surveyor
Minnesota License Number 18165