

CERTIFICATE OF LOCATION OF GOVERNMENT CORNER

County of Anoka

State of Minnesota

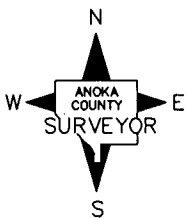
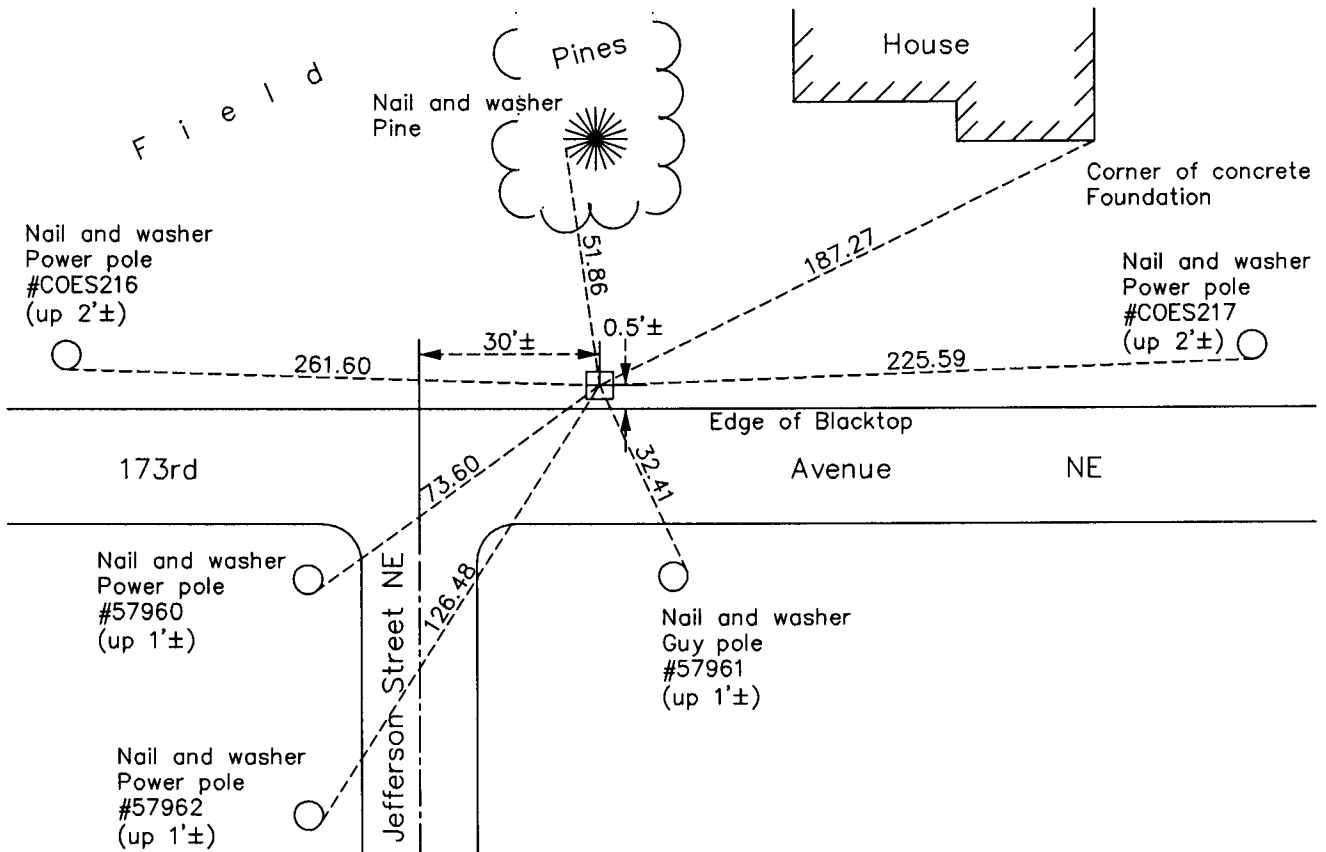
North 1/4 Corner of Sec. 7 Township 32 Range 23

On the 24th day of October, 1962, the described corner was evidenced by a granite monument

and to perpetuate the location of said corner, at the exact location thereof, a permanent marker was placed consisting of the same granite monument

AND on the 19th day of April, 2011, said permanent marker was found down 2'± and the ties were updated

Updated reference ties are as shown below.



Revision Date
9/02/11

N.A.D. 1983 Coordinates
(1996 Adjustment)

County Project Coordinates	
Northing	190661.3798
Easting	502820.6504
Date	1/02/02

I hereby certify that this United States public land survey monument record is correct and complete to the best of my knowledge and belief.

Larry D. Hoium Date 9/02/11

Larry D. Hoium, Anoka County Surveyor
Minnesota License Number 18165