

CERTIFICATE OF LOCATION OF GOVERNMENT CORNER

County of Anoka

State of Minnesota

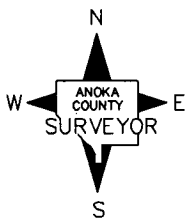
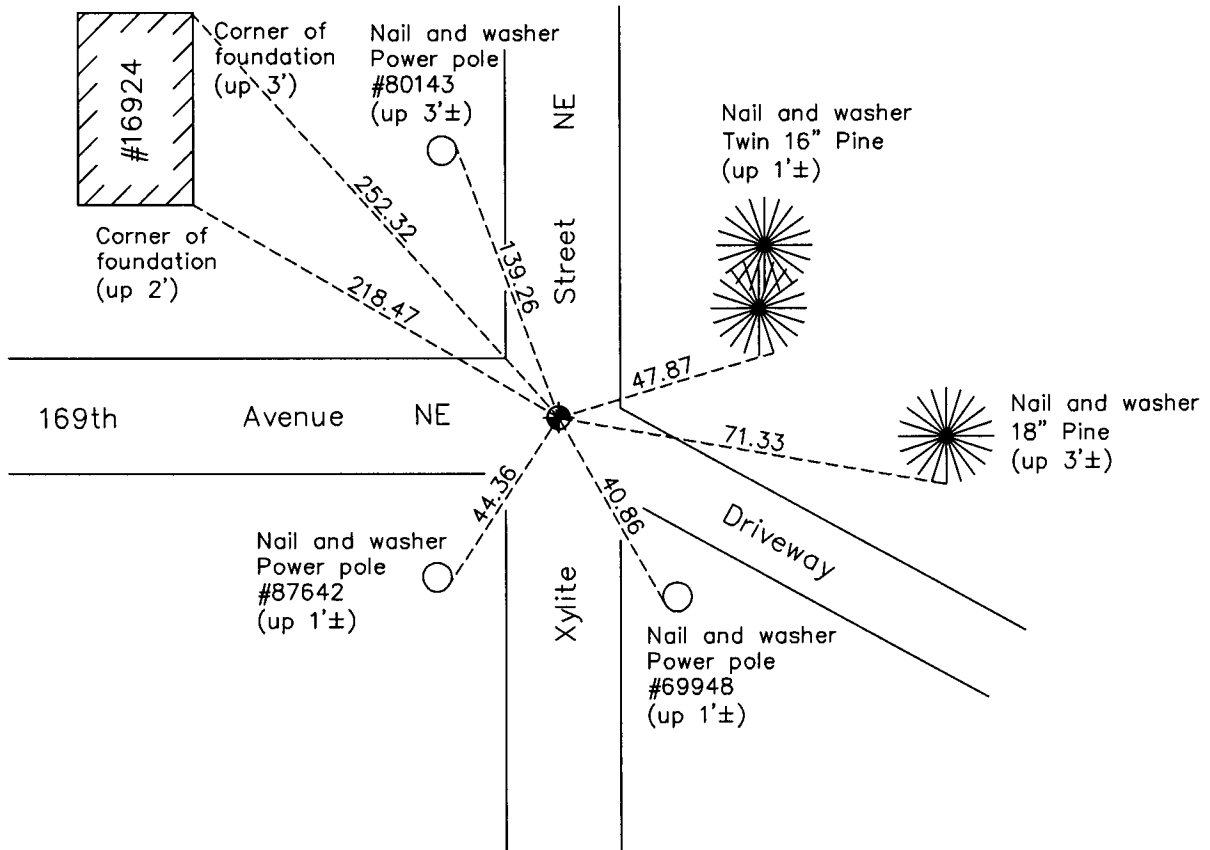
West 1/4 Corner of Sec. 10 Township 32 Range 23

On the 20th day of March, 1961, the described corner was evidenced by area resurvey

and to perpetuate the location of said corner, at the exact location thereof, a permanent marker was placed consisting of a cast iron monument

AND on the 25th day of February, 2011, said permanent marker was found and the ties
were updated

Updated reference ties are as shown below.



Revision Date

9/07/11

N.A.D. 1983 Coordinates
(1996 Adjustment)

County Project Coordinates	
Northing	188097.2767
Easting	516065.1088
Date	1/03/02

I hereby certify that this United States public land survey monument record is correct and complete to the best of my knowledge and belief.

Larry D. Hoium Date 9/07/11

Larry D. Hoium, Anoka County Surveyor

Minnesota License Number 18165