

# CERTIFICATE OF LOCATION OF GOVERNMENT CORNER

County of Anoka

State of Minnesota

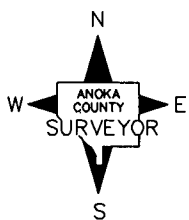
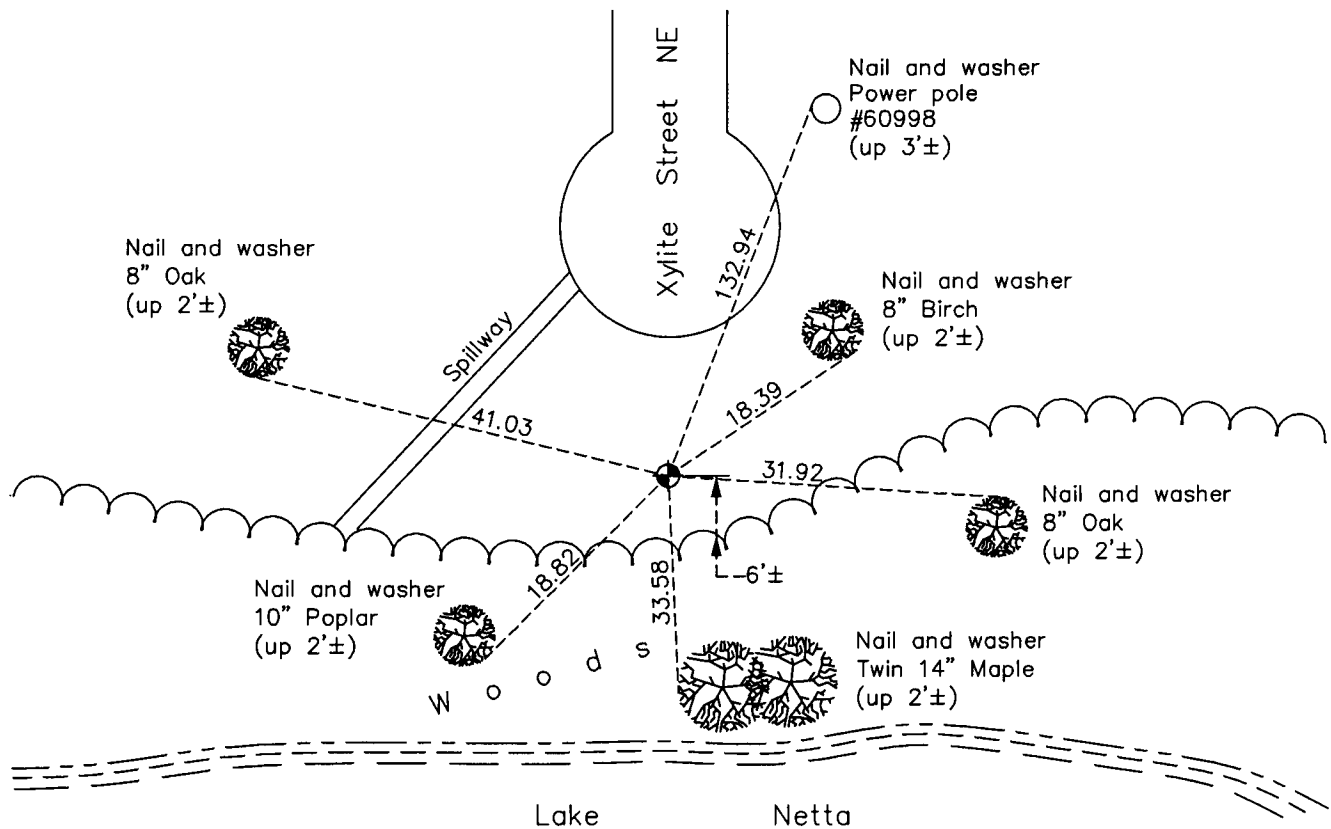
Witness Corner of Sec. 10 Township 32 Range 23  
(on west line of SW1/4)

On the 23rd day of March, 1961, the described corner was evidenced by area resurvey

and to perpetuate the location of said corner, at the exact location thereof, a permanent marker was placed consisting of a cast iron monument

AND on the 5th day of April, 2011, said permanent marker was found down 0.3'± and the ties were updated

Updated reference ties are as shown below.



Revision Date

9/07/11

N.A.D. 1983 Coordinates  
(1996 Adjustment)

| County Project Coordinates |             |
|----------------------------|-------------|
| Northing                   | 186452.6782 |
| Easting                    | 516092.4116 |
| Date                       | 1/16/02     |

I hereby certify that this United States public land survey monument record is correct and complete to the best of my knowledge and belief.

*Larry D. Hoium* Date 9/07/11

Larry D. Hoium, Anoka County Surveyor

Minnesota License Number 18165