

CERTIFICATE OF LOCATION OF GOVERNMENT CORNER

County of Anoka

State of Minnesota

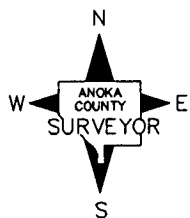
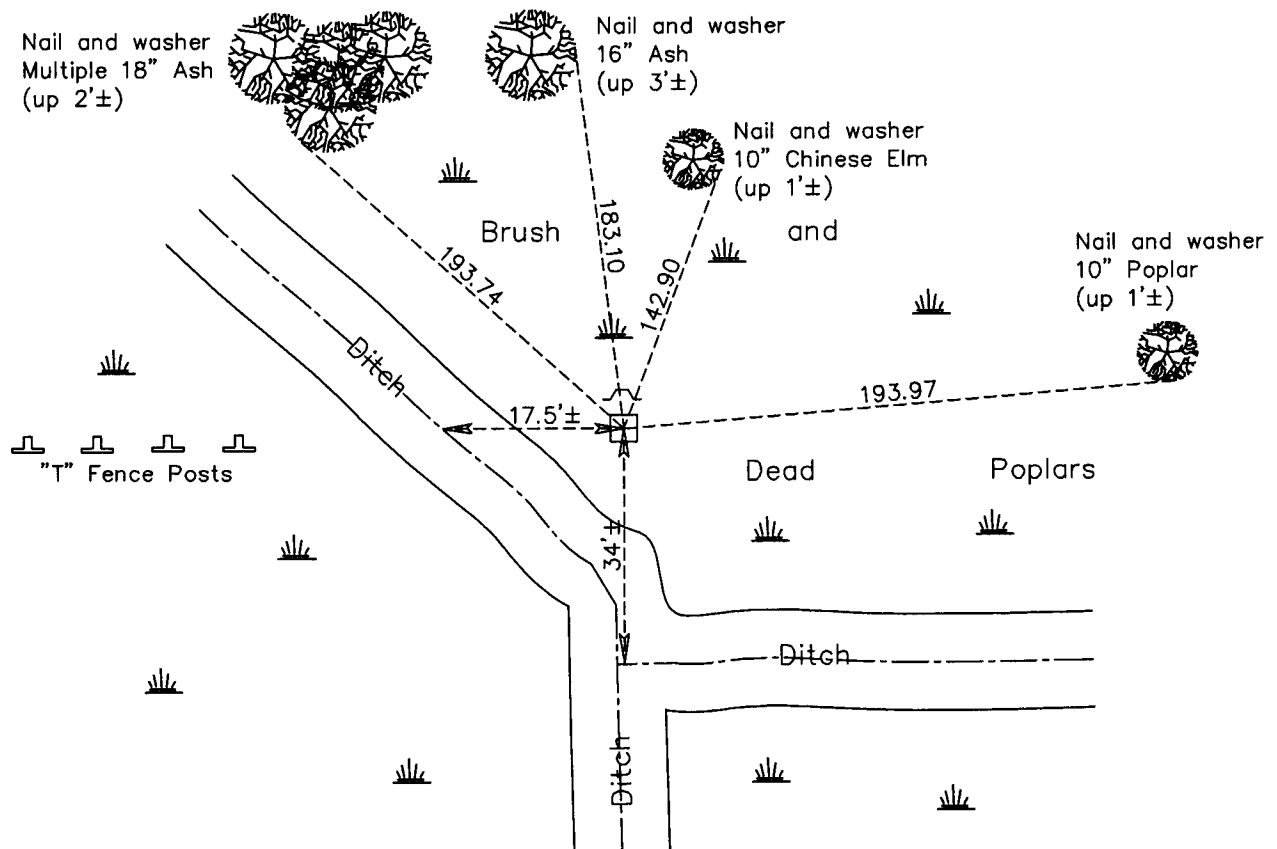
Southeast Corner of Sec. 12 Township 32 Range 23

On the 8th day of March, 1965, the described corner was evidenced by a concrete monument

and to perpetuate the location of said corner, at the exact location thereof, a permanent marker was placed consisting of the same concrete monument with a sign and post on the north side

AND on the ___ day of April, 2011, said permanent marker was found up 0.5'± and the ties were updated. Sign and post is leaning west.

Updated reference ties are as shown below.



N.A.D. 1983 Coordinates
(1996 Adjustment)

County Project Coordinates

Northing 185147.3964

Easting 532038.9539

Date 1/16/02

I hereby certify that this United States public land survey monument record is correct and complete to the best of my knowledge and belief.

Larry D. Hoium Date 9/08/11

Larry D. Hoium, Anoka County Surveyor

Minnesota License Number 18165

Revision Date

9/08/11