

# CERTIFICATE OF LOCATION OF GOVERNMENT CORNER

County of Anoka

State of Minnesota

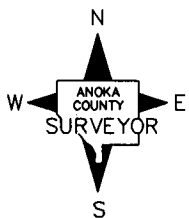
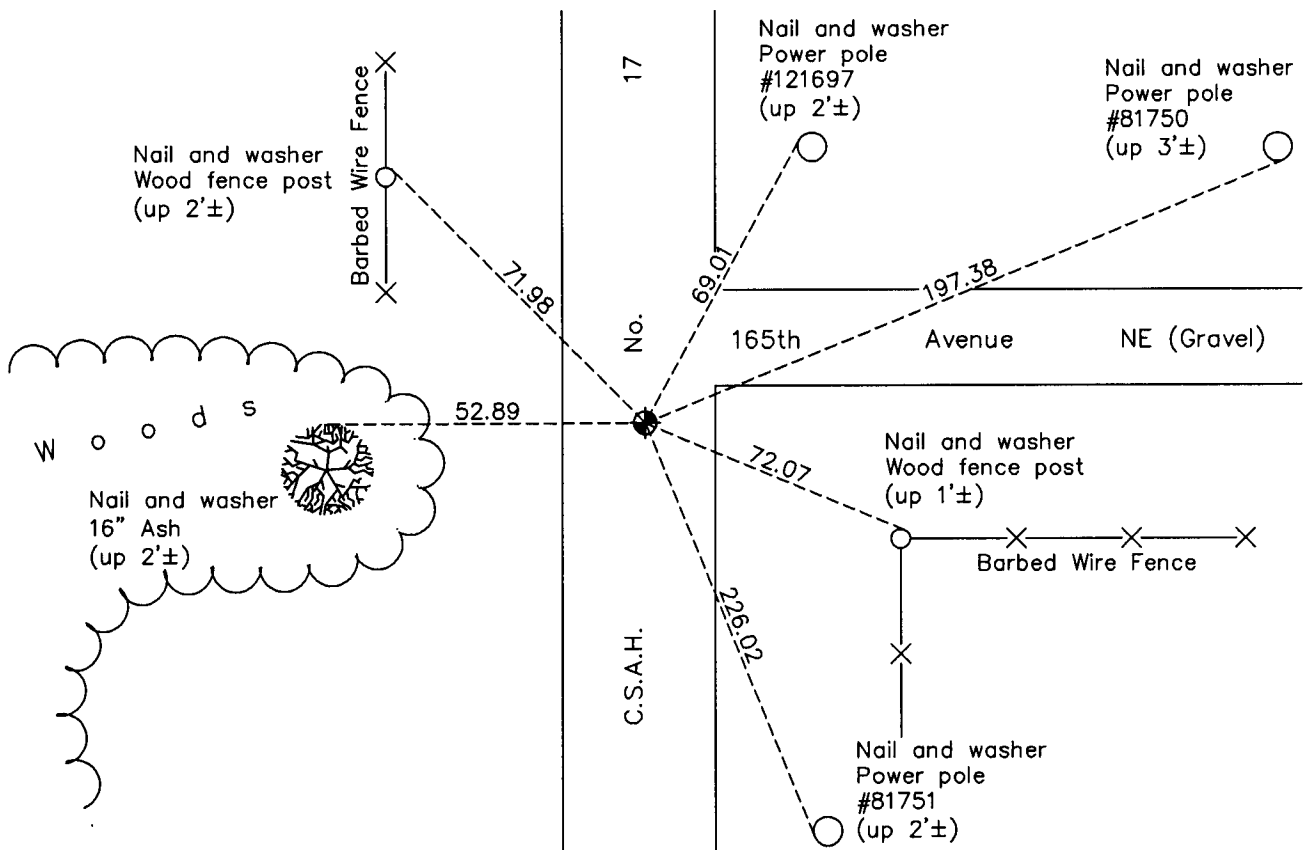
## North $\frac{1}{4}$ Corner of Sec. 13 Township 32 Range 23

On the 30th day of August, 1967, the described corner was evidenced by a P.K. nail

and to perpetuate the location of said corner, at the exact location thereof, a permanent marker was placed consisting of a cast iron monument

AND on the 19th day of April, 2011, said permanent marker was found and the ties were updated

Updated reference ties are as shown below.



Revision Date

9/08/11

N.A.D. 1983 Coordinates  
(1996 Adjustment)

County Project Coordinates	
Northing	185260.0673
Easting	529445.9695
Date	1/16/02

I hereby certify that this United States public land survey monument record is correct and complete to the best of my knowledge and belief.

*Larry D. Hoium* Date 9/08/11

Larry D. Hoium, Anoka County Surveyor

Minnesota License Number 18165