

CERTIFICATE OF LOCATION OF GOVERNMENT CORNER

County of Anoka

State of Minnesota

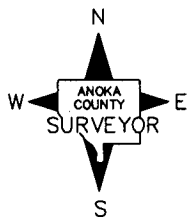
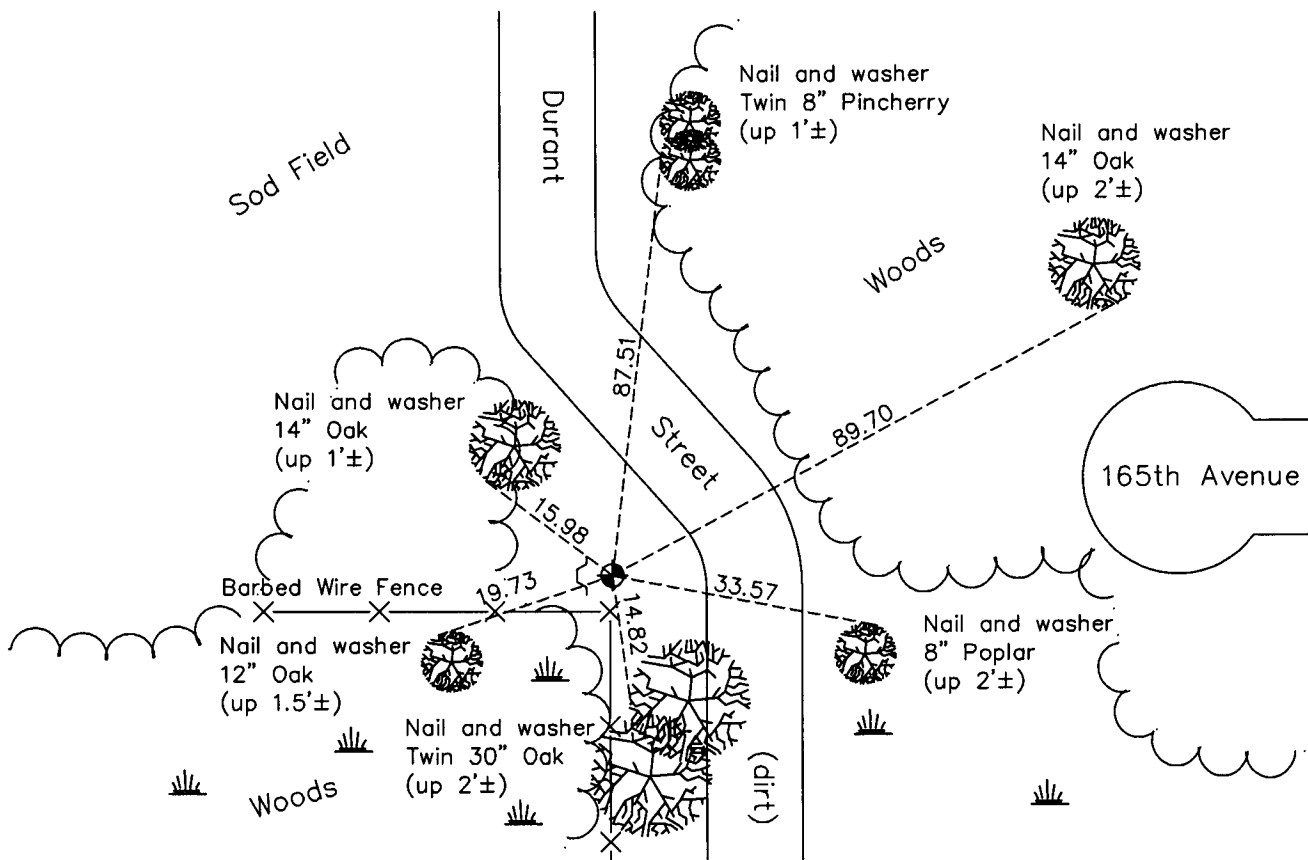
Northwest Corner of Sec. 13 Township 32 Range 23

On the 1st day of December, 1965, the described corner was evidenced by area resurvey

and to perpetuate the location of said corner, at the exact location thereof, a permanent marker was placed consisting of a cast iron monument with a sign and post on the west side

AND on the 4th day of April, 2011, said permanent marker was found broken and was replaced with a new cast iron monument down 0.4'± and the ties were updated.

Updated reference ties are as shown below.



Revision Date
 9/12/11

N.A.D. 1983 Coordinates
 (1996 Adjustment)

County Project Coordinates	
Northing	185394.7538
Easting	526824.4911
Date	1/16/02

I hereby certify that this United States public land survey monument record is correct and complete to the best of my knowledge and belief.

Larry D. Hoium Date 9/12/11
 Larry D. Hoium, Anoka County Surveyor
 Minnesota License Number 18165