

# CERTIFICATE OF LOCATION OF GOVERNMENT CORNER

County of Anoka

State of Minnesota

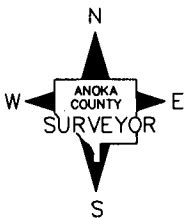
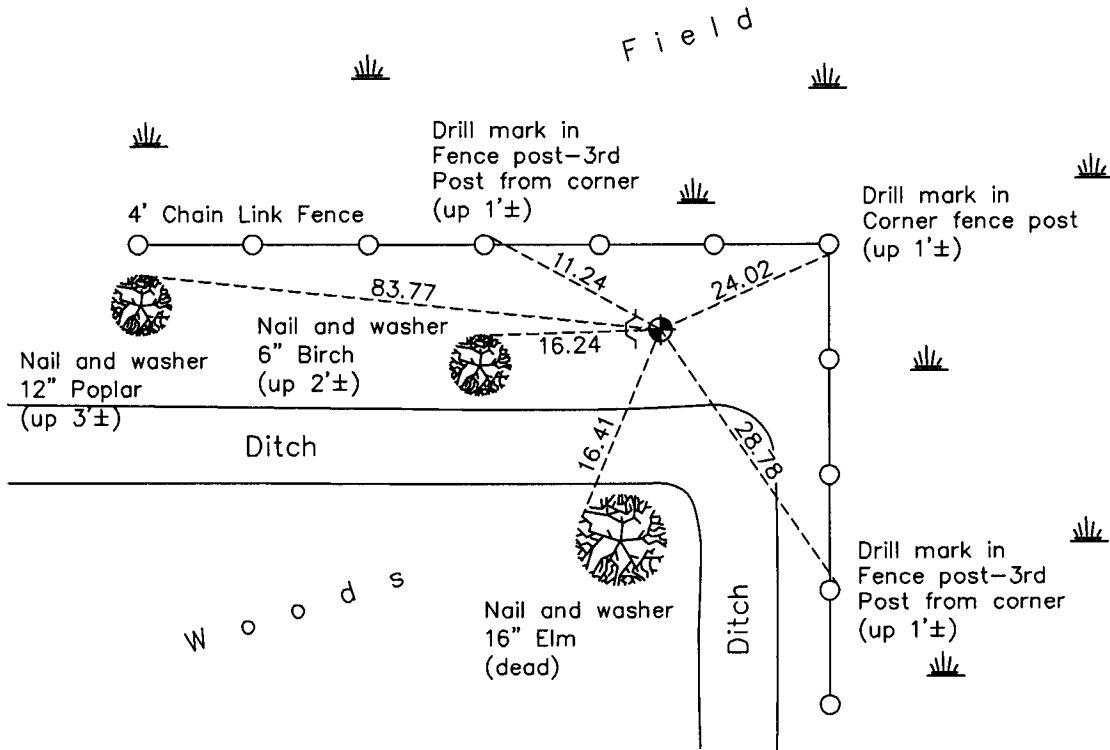
## Southeast Corner of Sec. 10 Township 32 Range 23

On the 9th day of July, 1964, the described corner was evidenced by area resurvey

and to perpetuate the location of said corner, at the exact location thereof, a permanent marker was placed consisting of a cast iron monument

AND on the 24th day of March, 2011, said permanent marker was found with a sign and post on the west side and the ties were updated

Updated reference ties are as shown below.



Revision Date  
9/12/11

N.A.D. 1983 Coordinates  
(1996 Adjustment)

County Project Coordinates	
Northing	185301.1453
Easting	521487.6233
Date	7/30/02

I hereby certify that this United States public land survey monument record is correct and complete to the best of my knowledge and belief.

*Larry D. Hoium* Date 9/12/11

Larry D. Hoium, Anoka County Surveyor

Minnesota License Number 18165