

CERTIFICATE OF LOCATION OF GOVERNMENT CORNER

County of Anoka

State of Minnesota

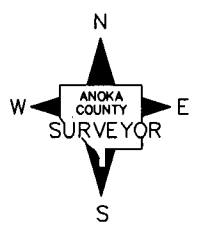
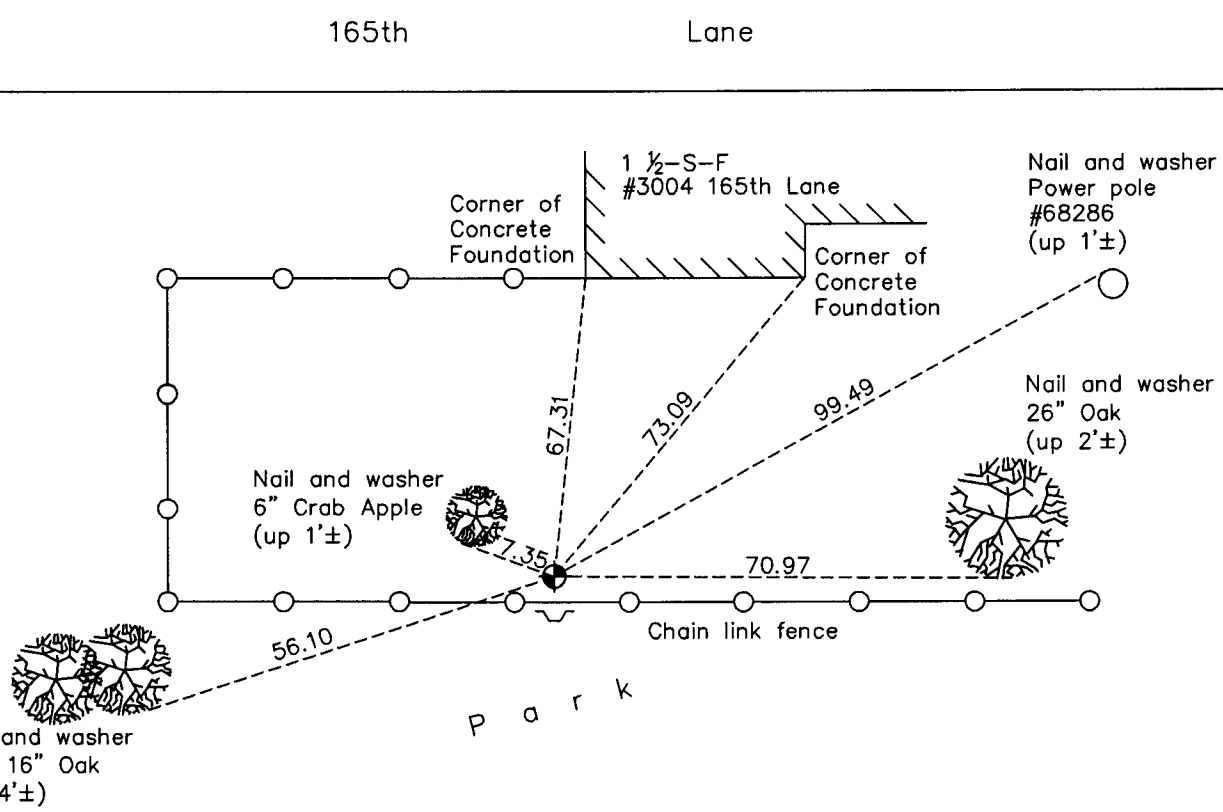
South 1/4 Corner of Sec. 10 Township 32 Range 23

On the 22nd day of March, 1961, the described corner was evidenced by area resurvey

and to perpetuate the location of said corner, at the exact location thereof, a permanent marker was placed consisting of a cast iron monument with a sign and post on the south side

AND on the 25th day of March, 2011, said permanent marker was found down 0.5'± and the ties were updated

Updated reference ties are as shown below.



N.A.D. 1983 Coordinates
(1996 Adjustment)

County Project Coordinates	
Northing	185354.0417
Easting	518805.7494
Date	9/04/01

Revision Date
9/13/11

I hereby certify that this United States public land survey monument record is correct and complete to the best of my knowledge and belief.

Larry D. Hoium Date 9/13/11

Larry D. Hoium, Anoka County Surveyor
Minnesota License Number 18165