

CERTIFICATE OF LOCATION OF GOVERNMENT CORNER

County of Anoka

State of Minnesota

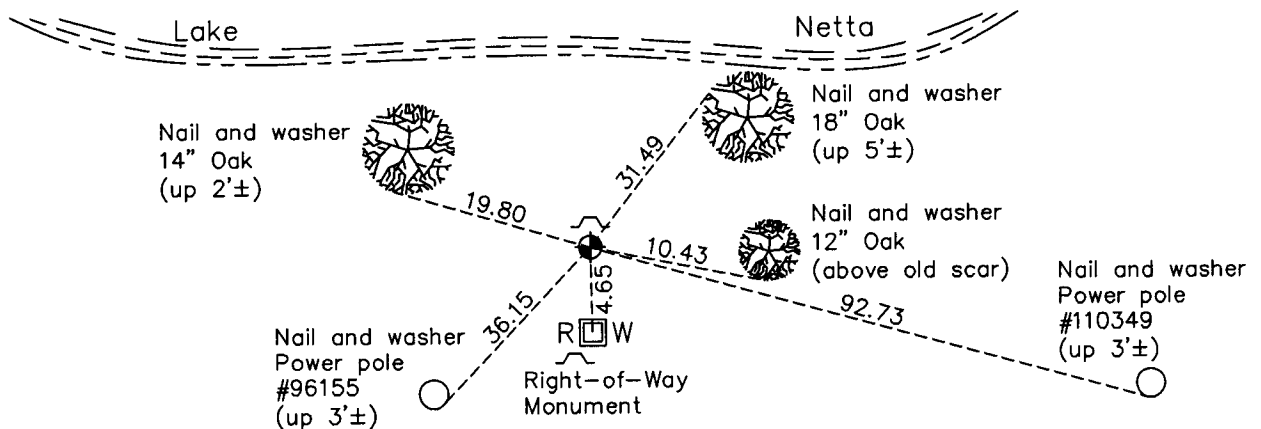
Witness Corner of Sec. 16 Township 32 Range 23
 (on east line of NE1/4)

On the 4th day of March, 1998, the described corner was evidenced by area resurvey

and to perpetuate the location of said corner, at the exact location thereof, a permanent marker was placed consisting of a cast iron monument with a sign and post on the north side

AND on the 1st day of March, 2011, said permanent marker was found and the ties
were updated

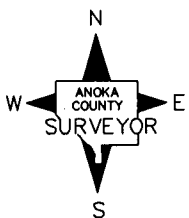
Updated reference ties are as shown below.



County Road No. 60

(Constance Boulevard)

County Road No. 61 (Xyite Street)



Revision Date
9/13/11

N.A.D. 1983 Coordinates
 (1996 Adjustment)

County Project Coordinates	
Northing	<u>184178.2378</u>
Easting	<u>516109.3396</u>
Date	<u>11/28/01</u>

I hereby certify that this United States public land survey monument record is correct and complete to the best of my knowledge and belief.

Date 9/13/11
 Larry D. Hoium, Anoka County Surveyor
 Minnesota License Number 18165