

CERTIFICATE OF LOCATION OF GOVERNMENT CORNER

County of Anoka

State of Minnesota

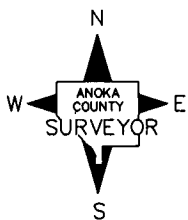
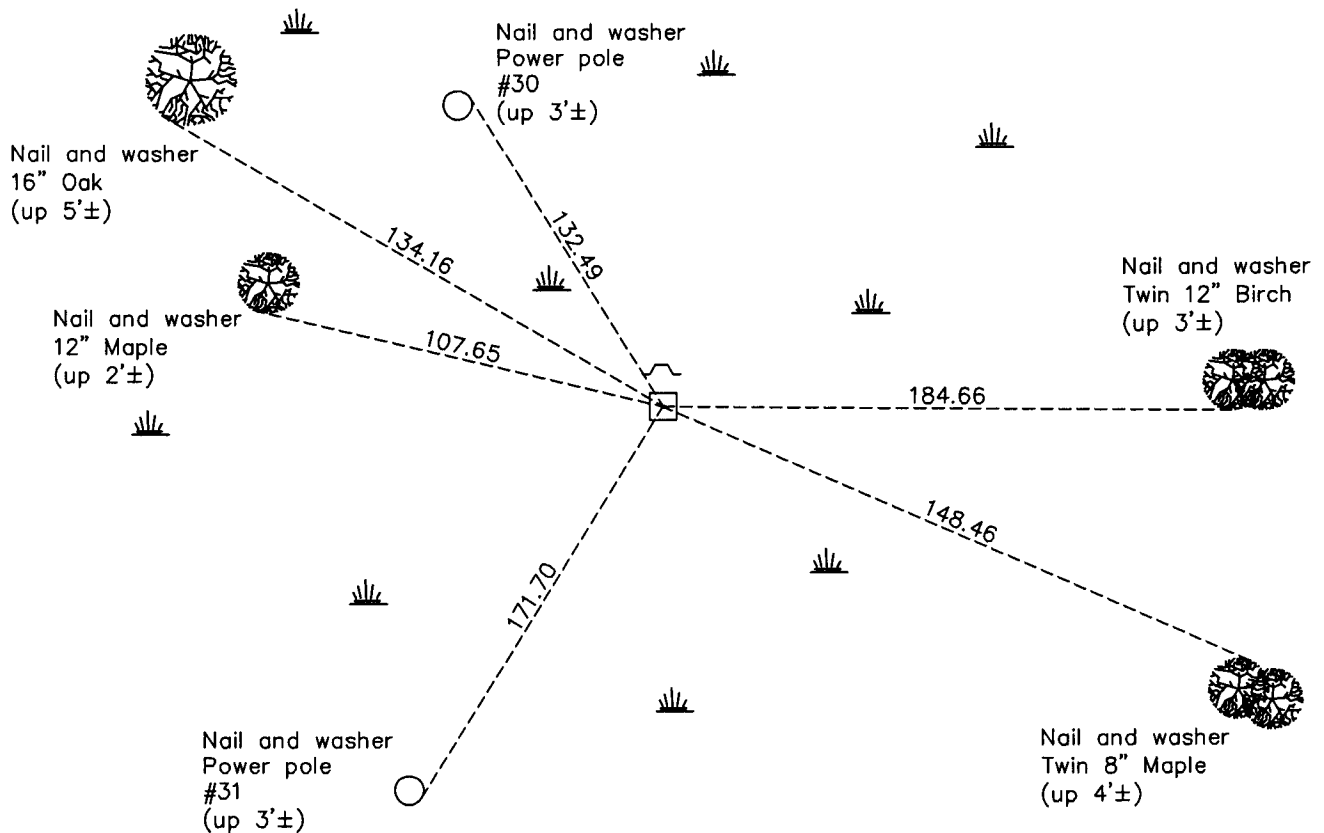
Southeast Corner of Sec. 8 Township 32 Range 23

On the 28th day of December, 1962, the described corner was evidenced by a concrete monument

and to perpetuate the location of said corner, at the exact location thereof, a permanent marker was placed consisting of the same concrete monument (4" square) with a sign and post on the north side

AND on the 14th day of March, 2011, said permanent marker was found and the ties were updated

Updated reference ties are as shown below.



Revision Date
9/13/11

N.A.D. 1983 Coordinates
(1996 Adjustment)

County Project Coordinates	
Northing	<u>185581.6487</u>
Easting	<u>510840.8293</u>
Date	<u>1/30/02</u>

I hereby certify that this United States public land survey monument record is correct and complete to the best of my knowledge and belief.

Larry D. Hoium Date 9/13/11

Larry D. Hoium, Anoka County Surveyor

Minnesota License Number 18165