

# CERTIFICATE OF LOCATION OF GOVERNMENT CORNER

County of Anoka

State of Minnesota

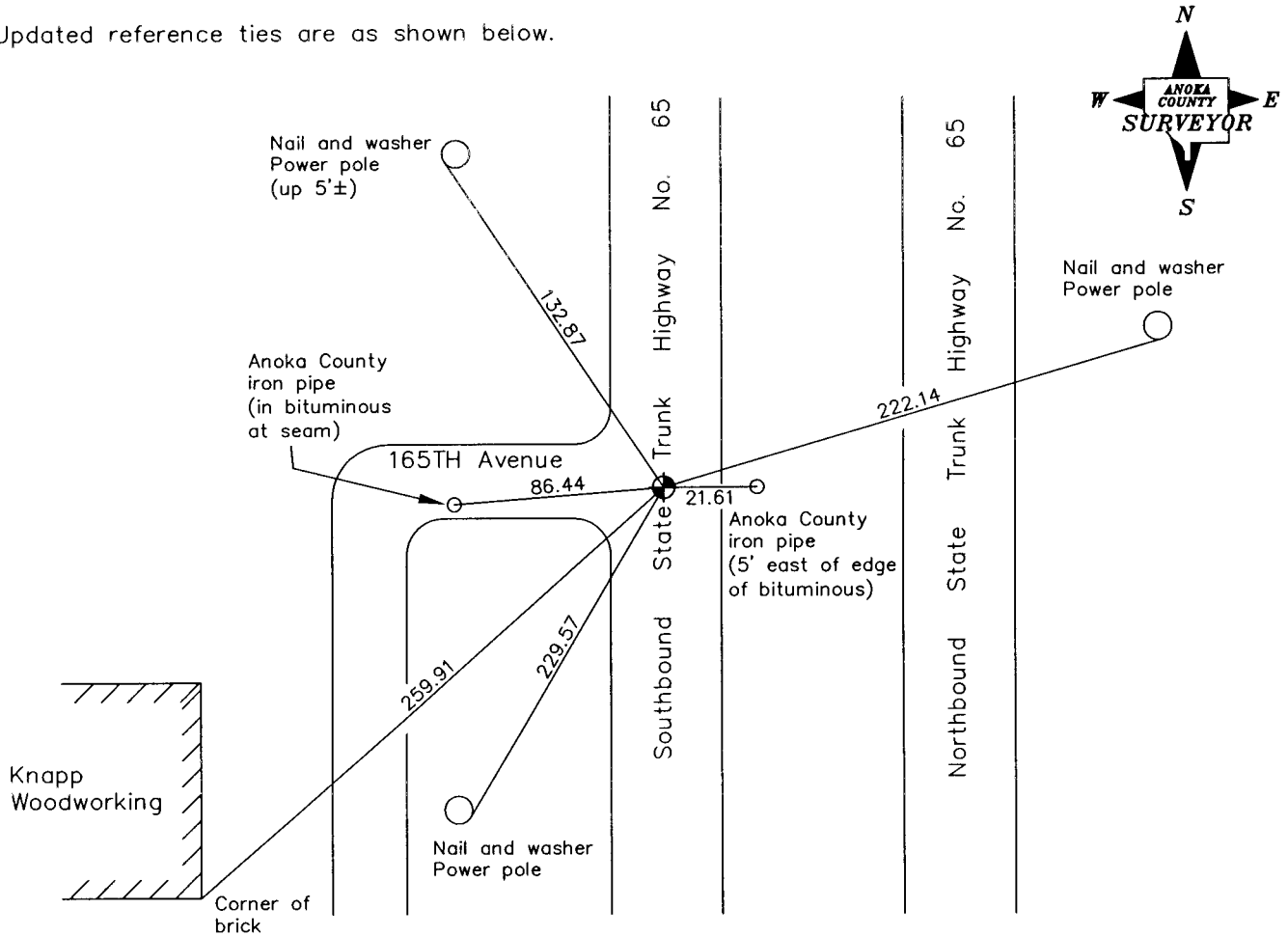
South 1/4 Corner of Sec. 8 Township 32 Range 23

On the 16th day of April, 1963, the described corner was evidenced by a spike in centerline

and to perpetuate the location of said corner, at the exact location thereof, a permanent marker was placed consisting of a cast iron monument

AND on the 18th day of September, 2006, said permanent marker was found

Updated reference ties are as shown below.



Revised date

7/20/81
7/10/87
8/18/98
9/18/06

N.A.D. 1983 Coordinates  
(1996 Adjustment)

County Project Coordinates	
Northing	185531.8004
Easting	508142.8432
Date	9/18/06

I hereby certify that this United States public land survey monument record is correct and complete to the best of my knowledge and belief.

*Larry D. Hoium* Date 6/26/07  
 \_\_\_\_\_  
 Larry D. Hoium, Anoka County Surveyor  
 Minnesota License Number 18165