

CERTIFICATE OF LOCATION OF GOVERNMENT CORNER

County of Anoka

State of Minnesota

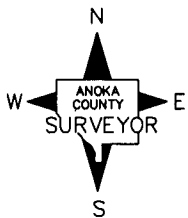
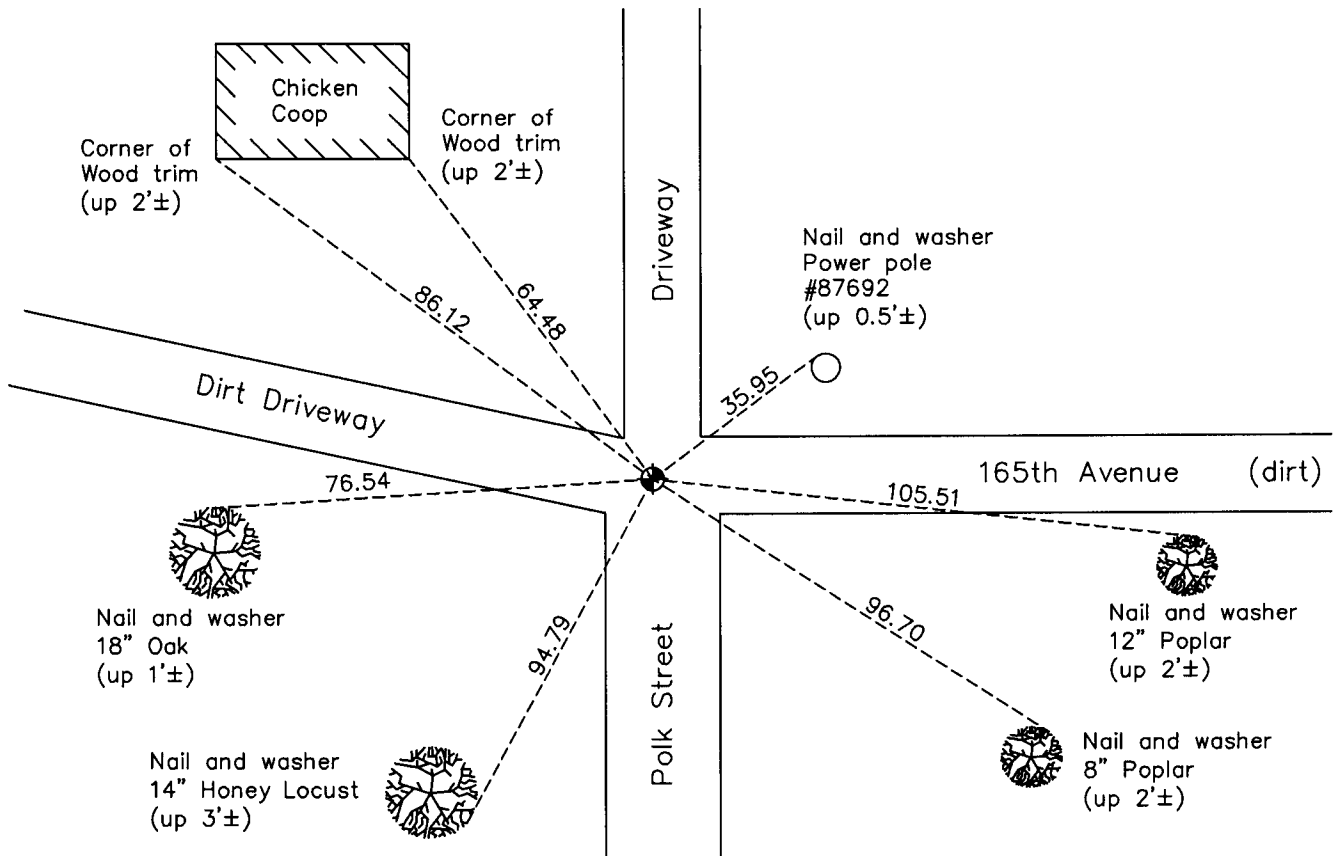
Southwest Corner of Sec. 8 Township 32 Range 23

On the 22nd day of June, 1961, the described corner was evidenced by a 3/4" iron pipe

and to perpetuate the location of said corner, at the exact location thereof, a permanent marker was placed consisting of a cast iron monument down 0.5'±

AND on the 24th day of February, 2011, said permanent marker was found down 0.5'± and the ties were updated

Updated reference ties are as shown below.



N.A.D. 1983 Coordinates
(1996 Adjustment)

County Project Coordinates	
Northing	185471.9983
Easting	505469.9668
Date	12/13/01

Revision Date
9/13/11

I hereby certify that this United States public land survey monument record is correct and complete to the best of my knowledge and belief.

Larry D. Hoium Date 9/13/11

Larry D. Hoium, Anoka County Surveyor

Minnesota License Number 18165