

CERTIFICATE OF LOCATION OF GOVERNMENT CORNER

County of Anoka

State of Minnesota

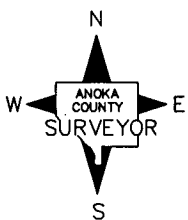
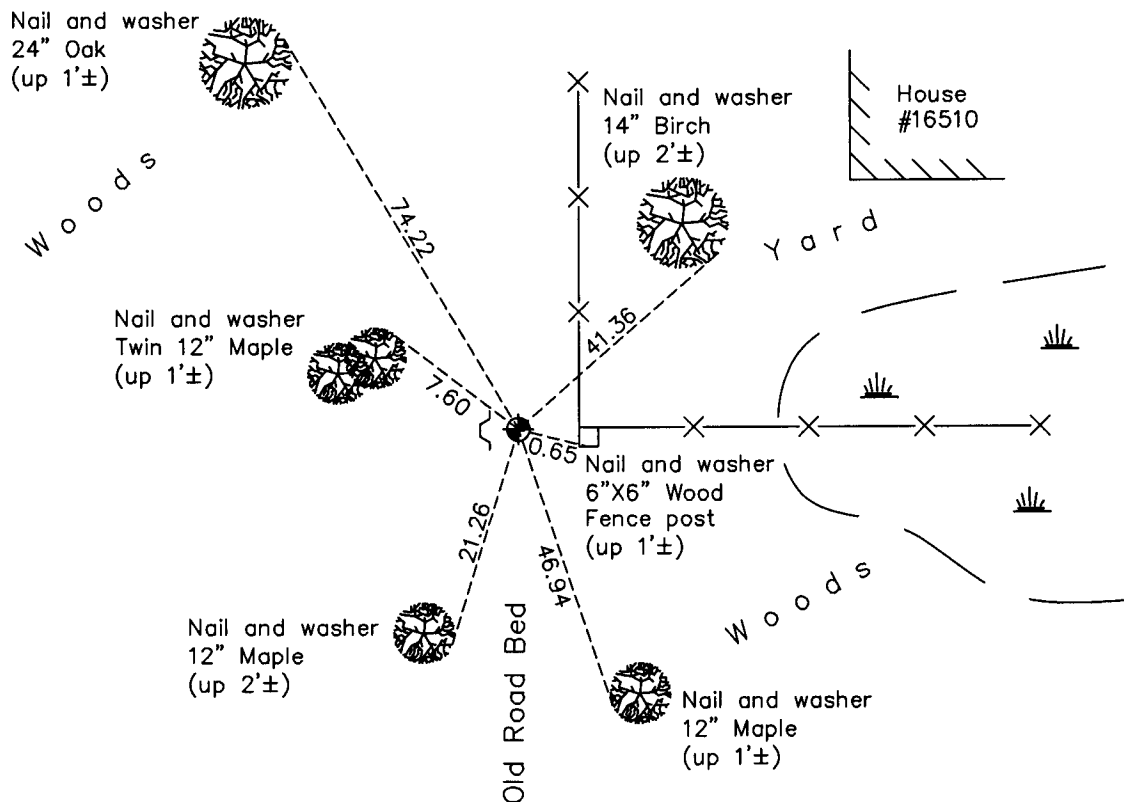
North 1/4 Corner of Sec. 18 Township 32 Range 23

On the 11th day of September, 1964, the described corner was evidenced by area resurvey

and to perpetuate the location of said corner, at the exact location thereof, a permanent marker was placed consisting of a cast iron monument down 1.5'±

AND on the 10th day of March, 2011, said permanent marker was found down 1.5'± and the ties were updated. On April 20, 2011 set sign and post on the west side.

Updated reference ties are as shown below.



Revision Date

9/13/11

N.A.D. 1983 Coordinates
(1996 Adjustment)

County Project Coordinates	
Northing	185382.6140
Easting	502825.2718
Date	1/02/02

I hereby certify that this United States public land survey monument record is correct and complete to the best of my knowledge and belief.

Larry D. Hoium Date 9/13/11

Larry D. Hoium, Anoka County Surveyor

Minnesota License Number 18165