

CERTIFICATE OF LOCATION OF GOVERNMENT CORNER

County of Anoka

State of Minnesota

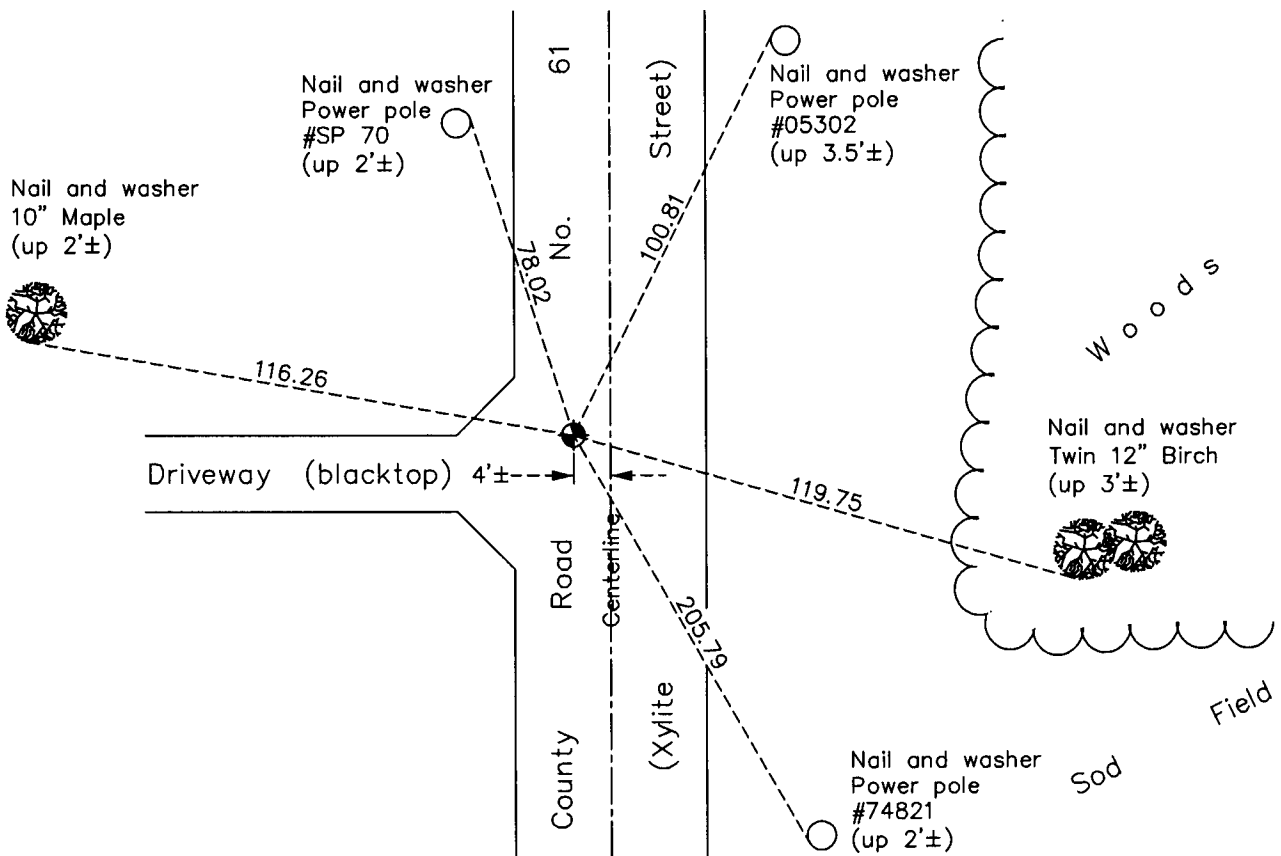
Southeast Corner of Sec. 16 Township 32 Range 23

On the 9th day of June, 1960, the described corner was evidenced by a concrete monument

and to perpetuate the location of said corner, at the exact location thereof, a permanent marker was placed consisting of a cast iron monument

AND on the day of March, 2011, said permanent marker was found and the ties were updated

Updated reference ties are as shown below.



N
S
E
W

ANOKA COUNTY SURVEYOR

S

Revision Date
9/16/11

N.A.D. 1983 Coordinates
(1996 Adjustment)

County Project Coordinates	
Northing	180131.9744
Easting	516111.4304
Date	9/18/01

I hereby certify that this United States public land survey monument record is correct and complete to the best of my knowledge and belief.

Larry D. Hoium Date 9/16/11

Larry D. Hoium, Anoka County Surveyor
Minnesota License Number 18165