

# CERTIFICATE OF LOCATION OF GOVERNMENT CORNER

County of Anoka

State of Minnesota

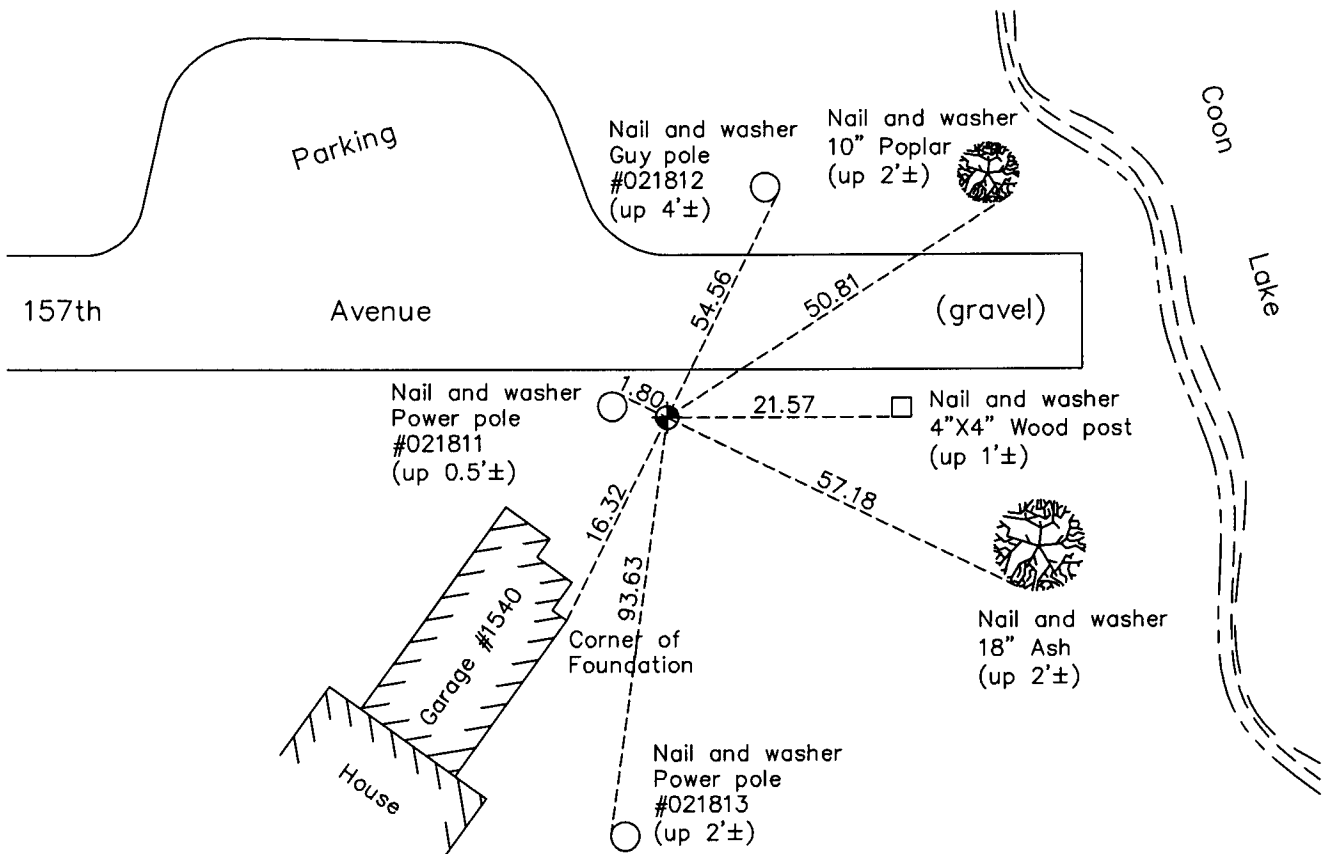
Meander Corner of Sec. 20 Township 32 Range 23  
 (on north line of section and west side of Ham Lake)

On the 27th day of September, 1972, the described corner was evidenced by a sandstone  
monument

and to perpetuate the location of said corner, at the exact location thereof, a permanent marker  
 was placed consisting of a cast iron monument

AND on the 30th day of March, 2011, said permanent marker was found down 0.2'± and  
the ties were updated

Updated reference ties are as shown below.



N

S

Revision Date

9/21/11

N.A.D. 1983 Coordinates  
(1996 Adjustment)

County Project Coordinates	
Northing	180253.3809
Easting	509419.0039
Date	2/07/02

I hereby certify that this United States public land survey monument record is correct and complete to the best of my knowledge and belief.

*Larry D. Hoium* Date 9/21/11

Larry D. Hoium, Anoka County Surveyor

Minnesota License Number 18165