

# CERTIFICATE OF LOCATION OF GOVERNMENT CORNER

County of Anoka

State of Minnesota

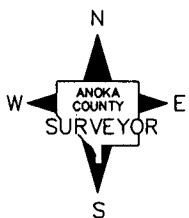
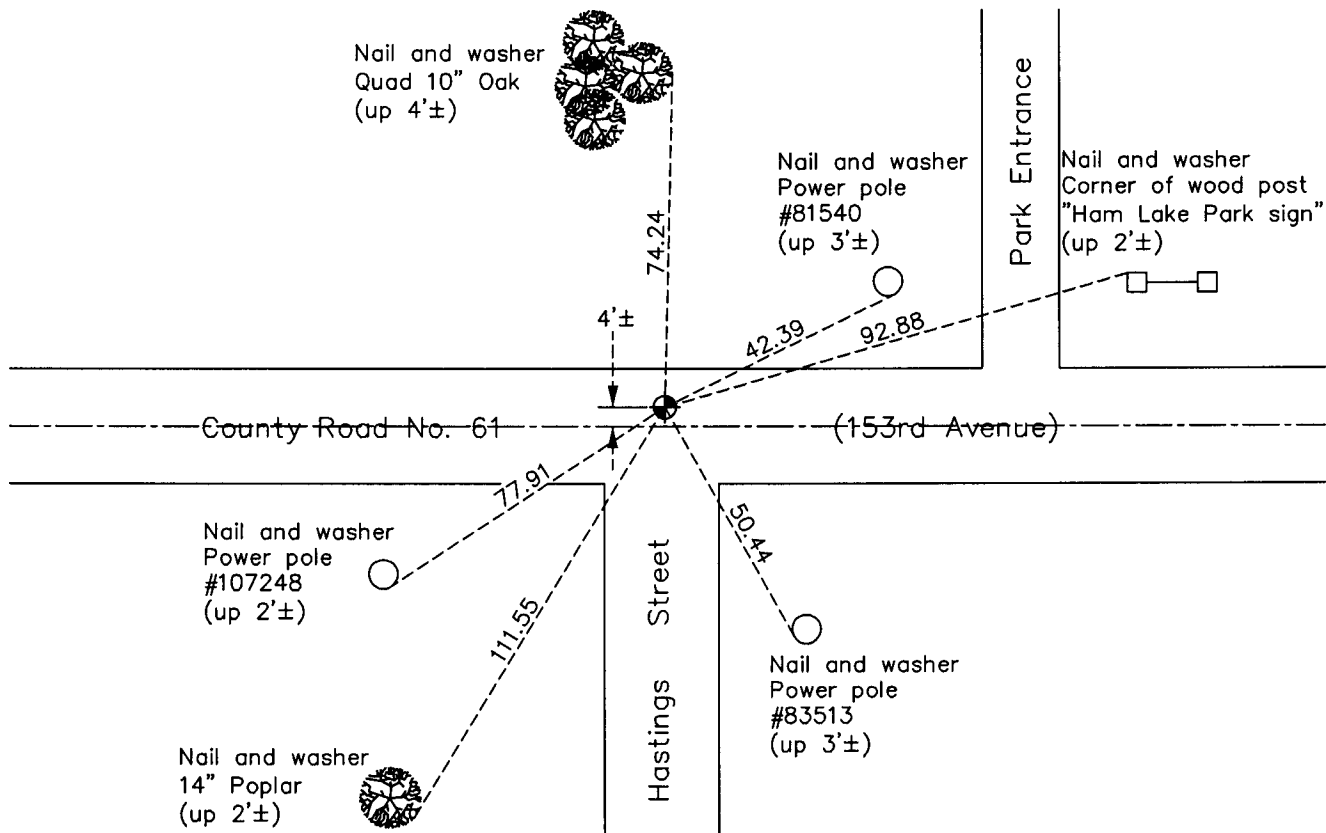
## West 1/4 Corner of Sec. 21 Township 32 Range 23

On the 6th day of June, 1960, the described corner was evidenced by a granite monument

and to perpetuate the location of said corner, at the exact location thereof, a permanent marker was placed consisting of a cast iron monument

AND on the 22nd day of April, 2011, said permanent marker was found and the ties were updated

Updated reference ties are as shown below.



Revision Date  
9/22/11

N.A.D. 1983 Coordinates  
(1996 Adjustment)

County Project Coordinates	
Northing	<u>177590.6896</u>
Easting	<u>510908.8257</u>
Date	<u>12/12/01</u>

I hereby certify that this United States public land survey monument record is correct and complete to the best of my knowledge and belief.

*Larry D. Hoium* Date 9/22/11

Larry D. Hoium, Anoka County Surveyor

Minnesota License Number 18165