

# CERTIFICATE OF LOCATION OF GOVERNMENT CORNER

County of Anoka

State of Minnesota

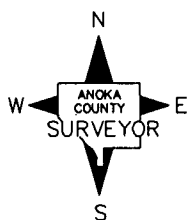
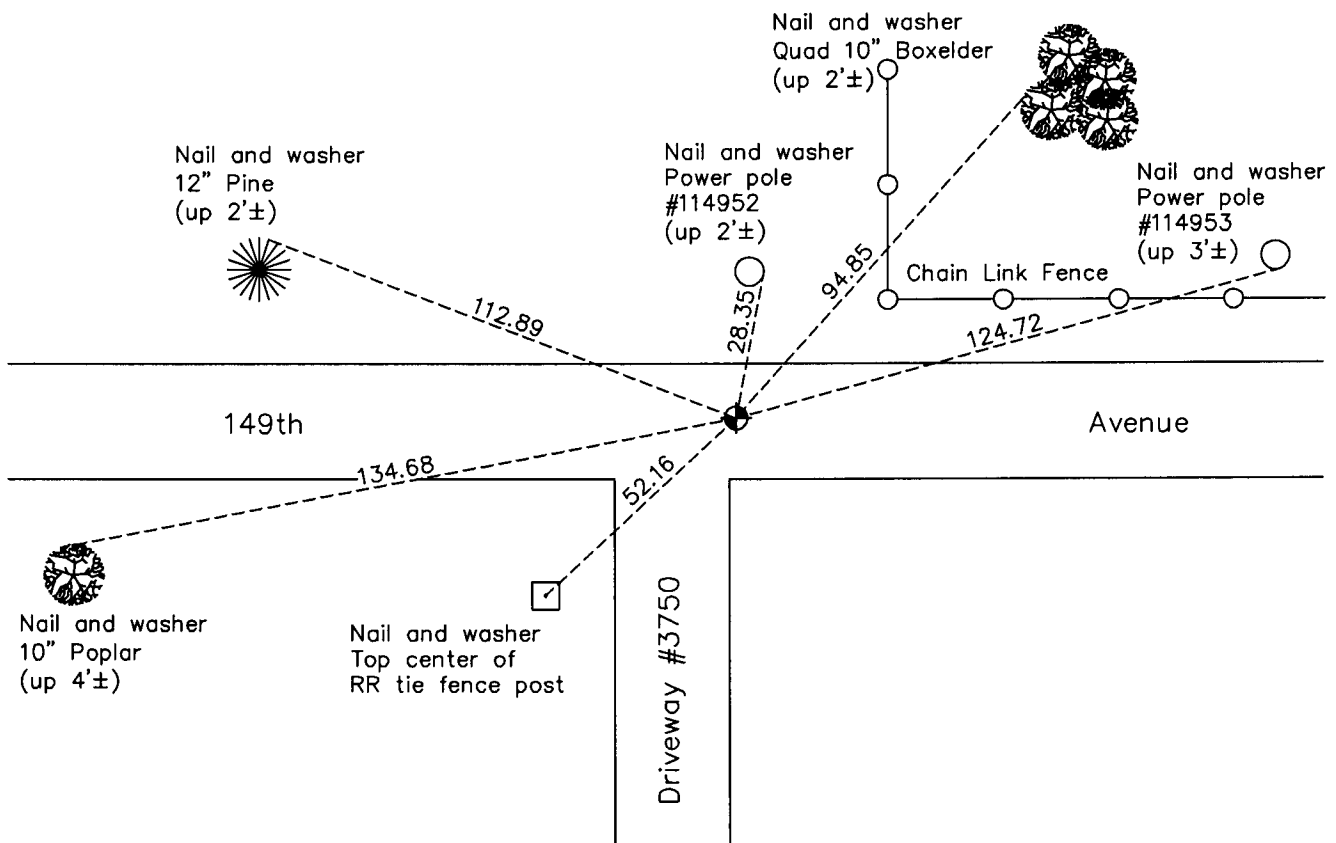
## North 1/4 Corner of Sec. 26 Township 32 Range 23

On the 22nd day of August, 1966, the described corner was evidenced by area resurvey

and to perpetuate the location of said corner, at the exact location thereof, a permanent marker was placed consisting of a cast iron monument

AND on the 29th day of March, 2011, said permanent marker was found and the ties were updated

Updated reference ties are as shown below.



Revision Date

9/23/11

N.A.D. 1983 Coordinates  
(1996 Adjustment)

County Project Coordinates	
Northing	174710.3140
Easting	524081.8810
Date	11/29/01

I hereby certify that this United States public land survey monument record is correct and complete to the best of my knowledge and belief.

Date 9/23/11  
 Larry D. Hoium, Anoka County Surveyor  
 Minnesota License Number 18165