

CERTIFICATE OF LOCATION OF GOVERNMENT CORNER

County of Anoka

State of Minnesota

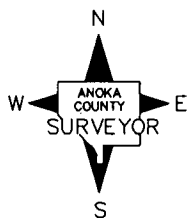
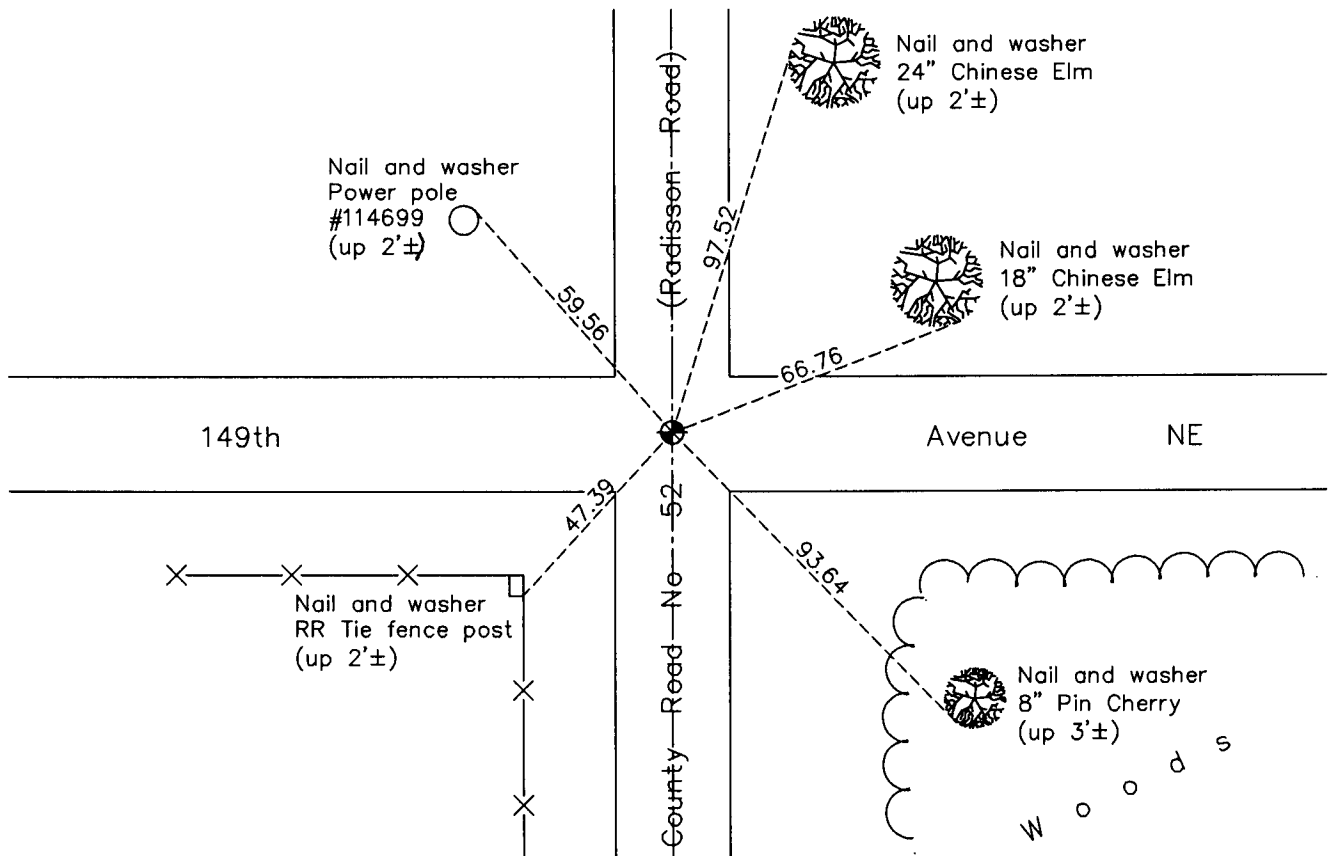
North 1/4 Corner of Sec. 28 Township 32 Range 23

On the 6th day of July, 1960, the described corner was evidenced by a granite monument

and to perpetuate the location of said corner, at the exact location thereof, a permanent marker was placed consisting of a cast iron monument

AND on the 2nd day of March, 2011, said permanent marker was found and the ties were updated

Updated reference ties are as shown below.



Revision Date

9/23/11

N.A.D. 1983 Coordinates
(1996 Adjustment)

County Project Coordinates	
Northing	174878.2240
Easting	513510.0289
Date	11/30/01

I hereby certify that this United States public land survey monument record is correct and complete to the best of my knowledge and belief.

Larry D. Hoium Date 9/23/11

Larry D. Hoium, Anoka County Surveyor

Minnesota License Number 18165