

# CERTIFICATE OF LOCATION OF GOVERNMENT CORNER

County of Anoka

State of Minnesota

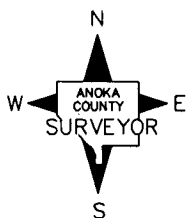
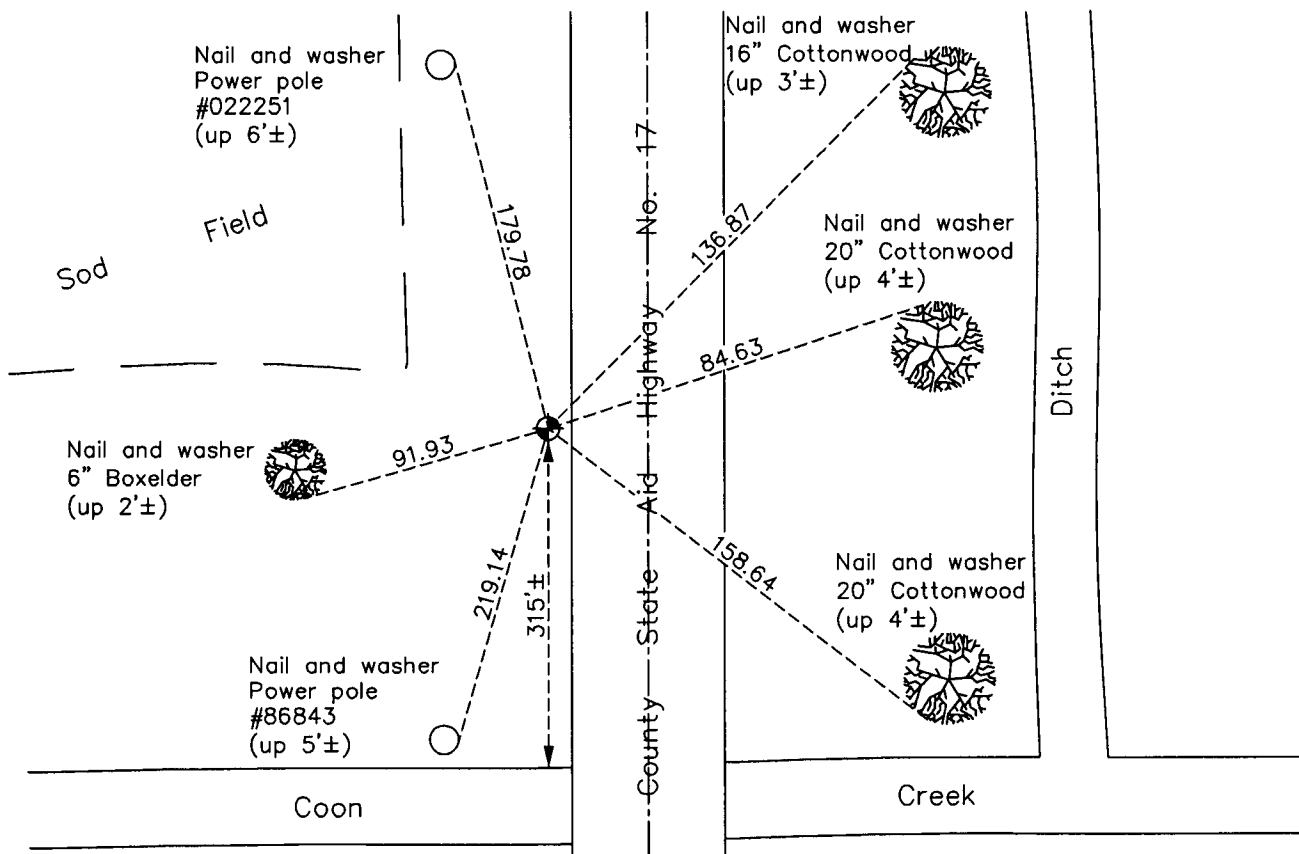
## East 1/4 Corner of Sec. 26 Township 32 Range 23

On the 24th day of August, 1966, the described corner was evidenced by area resurvey

and to perpetuate the location of said corner, at the exact location thereof, a permanent marker was placed consisting of a cast iron monument down 0.5'± near edge of blacktop

AND on the 18th day of April, 2011, said permanent marker was found and the ties were updated

Updated reference ties are as shown below.



Revision Date  
9/29/11

N.A.D. 1983 Coordinates  
(1996 Adjustment)

County Project Coordinates	
Northing	172076.6856
Easting	526705.6101
Date	12/13/01

I hereby certify that this United States public land survey monument record is correct and complete to the best of my knowledge and belief.

*Larry D. Hoium* Date 9/29/11

Larry D. Hoium, Anoka County Surveyor

Minnesota License Number 18165