

CERTIFICATE OF LOCATION OF GOVERNMENT CORNER

County of Anoka

State of Minnesota

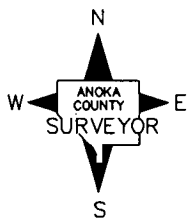
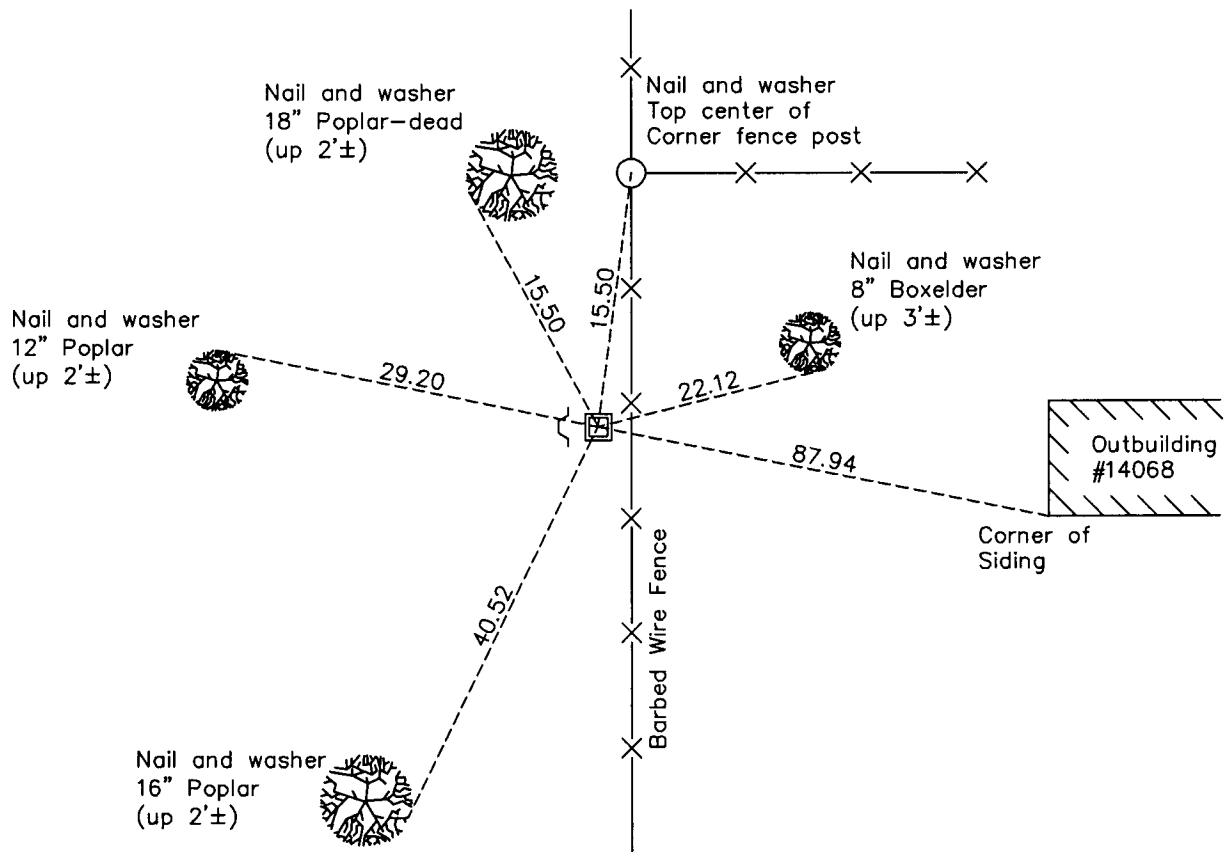
Northeast Corner of Sec. 33 Township 32 Range 23

On the 23rd day of July, 1964, the described corner was evidenced by a granite monument

and to perpetuate the location of said corner, at the exact location thereof, a permanent marker was placed consisting of a red and white iron pipe with a sign attached

AND on the 31st day of March, 2011, said permanent marker was found leaning & replaced w/ 2" sq. steel Telspar mont. up 0.5'± & punched 'County Surveyor' cap. Sign & post on west side.

Updated reference ties are as shown below.



N.A.D. 1983 Coordinates
(1996 Adjustment)

County Project Coordinates	
Northing	169533.3744
Easting	516148.2944
Date	12/12/01

Revision Date
10/06/11

I hereby certify that this United States public land survey monument record is correct and complete to the best of my knowledge and belief.

Larry D. Hoium Date 10/06/11

Larry D. Hoium, Anoka County Surveyor

Minnesota License Number 18165