

# CERTIFICATE OF LOCATION OF GOVERNMENT CORNER

County of Anoka

State of Minnesota

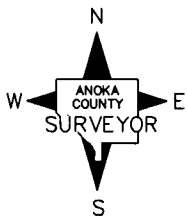
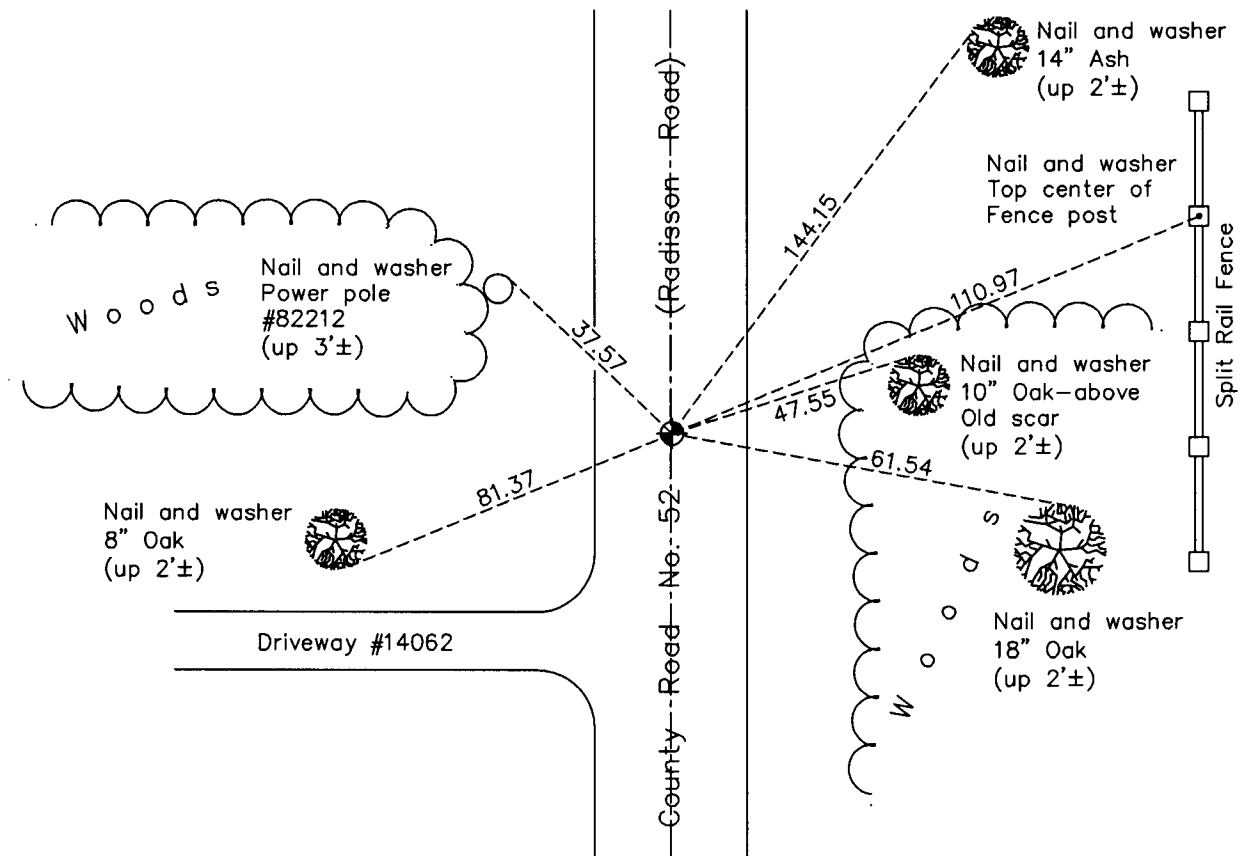
## North 1/4 Corner of Sec. 33 Township 32 Range 23

On the 6th day of July, 1960, the described corner was evidenced by an iron bar  
over a granite monument

and to perpetuate the location of said corner, at the exact location thereof, a permanent marker  
was placed consisting of a cast iron monument

AND on the 2nd day of March, 2011, said permanent marker was found and the ties  
were updated

Updated reference ties are as shown below.



Revision Date  
10/07/11

N.A.D. 1983 Coordinates  
(1996 Adjustment)

County Project Coordinates	
Northing	<u>169565.9412</u>
Easting	<u>513499.6319</u>
Date	<u>12/13/01</u>

I hereby certify that this United States public land survey monument record is correct and complete to the best of my knowledge and belief.

*Larry D. Hoium* Date 10/07/11

Larry D. Hoium, Anoka County Surveyor

Minnesota License Number 18165