

CERTIFICATE OF LOCATION OF GOVERNMENT CORNER

County of Anoka

State of Minnesota

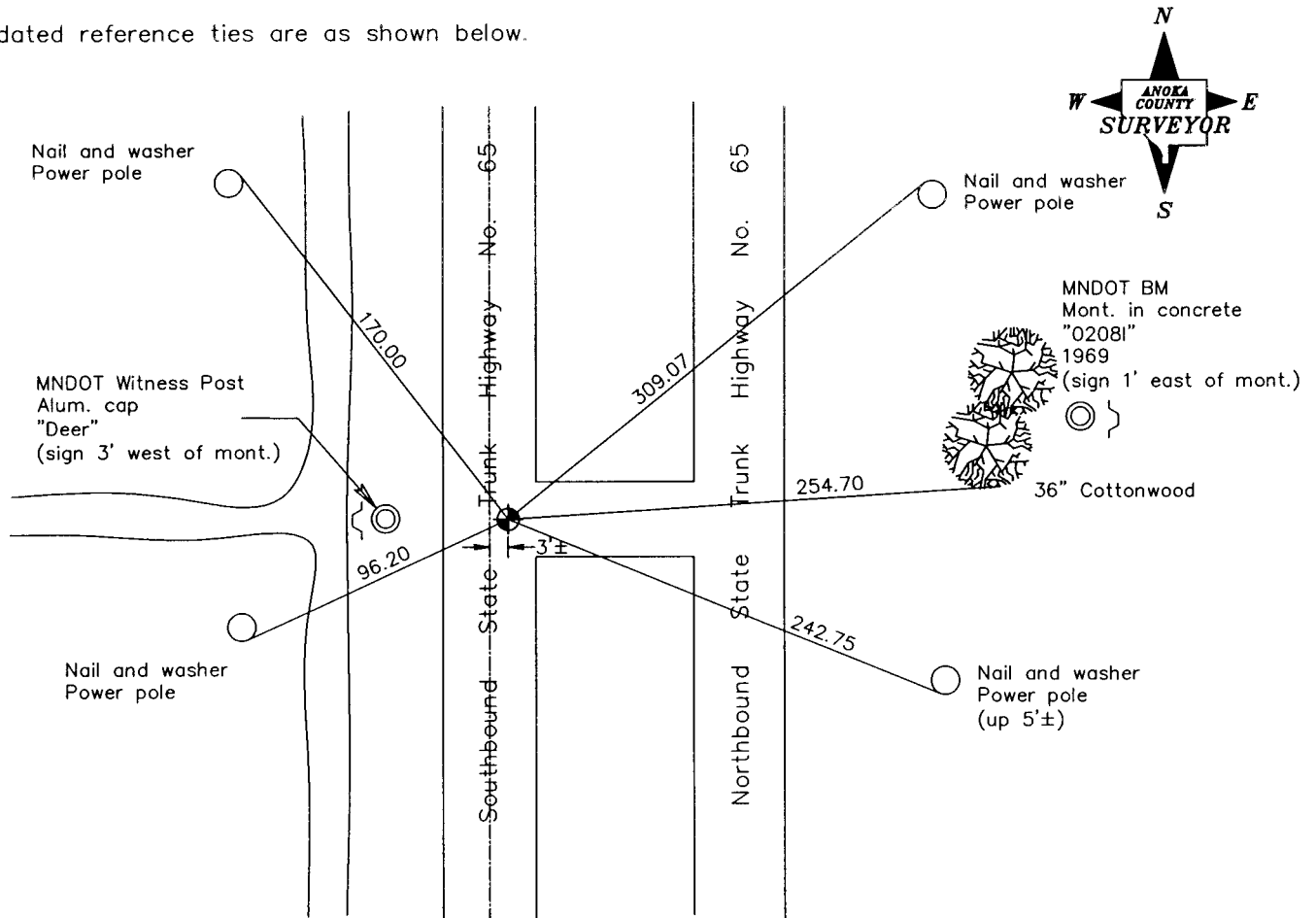
North 1/4 Corner of Sec. 32 Township 32 Range 23

On the 8th day of May, 1963, the described corner was evidenced by a P.K. nail set by highway department

and to perpetuate the location of said corner, at the exact location thereof, a permanent marker was placed consisting of a cast iron monument

AND on the 28th day of August, 2006, said permanent marker was found

Updated reference ties are as shown below.



Revised date
7/20/81
10/24/90
8/13/96
8/28/06

N.A.D. 1983 Coordinates (1996 Adjustment)	
County Project Coordinates	
Northing	<u>169579.7477</u>
Easting	<u>508168.1655</u>
Date	<u>8/28/06</u>

I hereby certify that this United States public land survey monument record is correct and complete to the best of my knowledge and belief.

Larry D. Hoium Date 6/27/06

Larry D. Hoium, Anoka County Surveyor

Minnesota License Number 18165