

CERTIFICATE OF LOCATION OF GOVERNMENT CORNER

County of Anoka

State of Minnesota

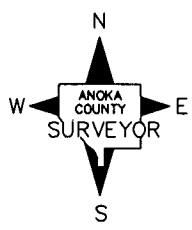
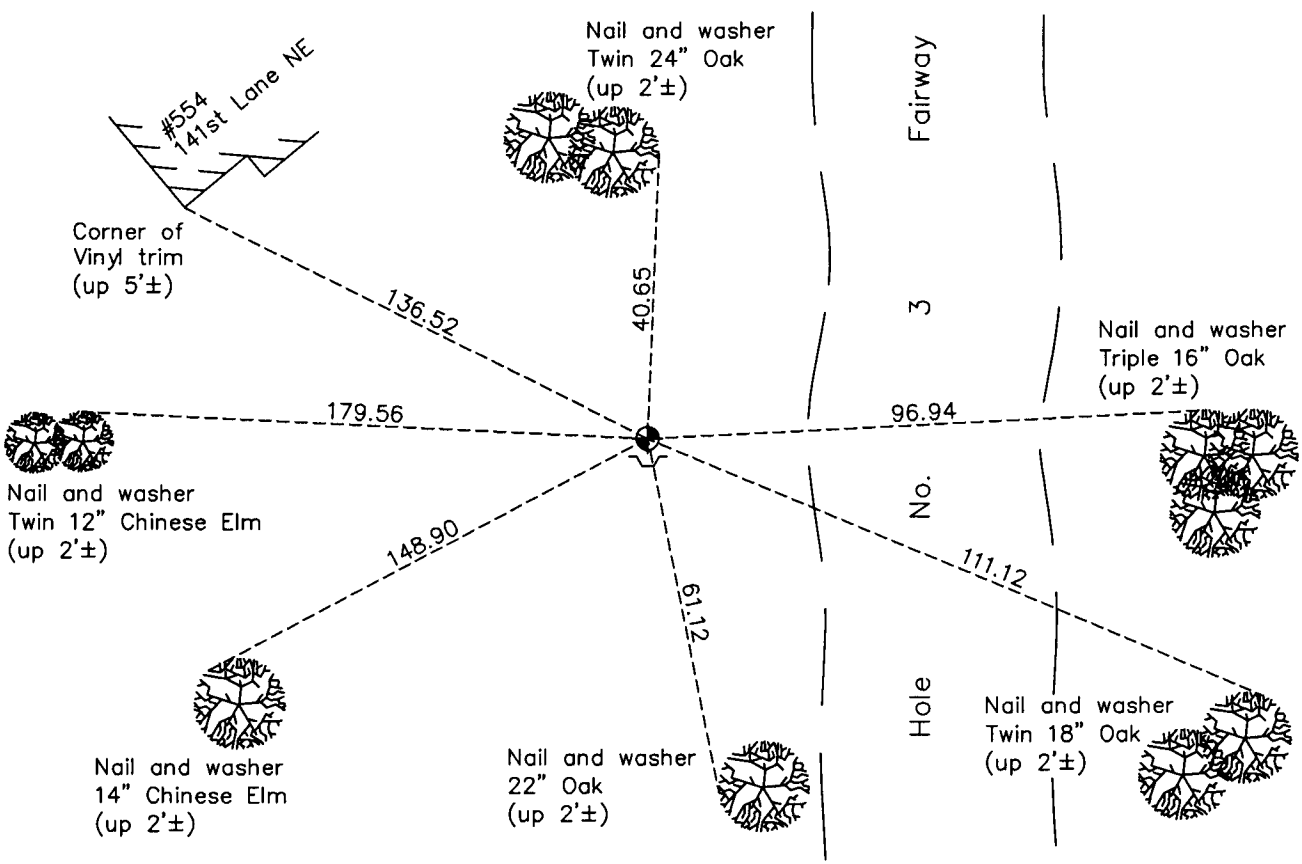
South 1/4 Corner of Sec. 30 Township 32 Range 23

On the 13th day of September, 1960, the described corner was evidenced by a concrete monument

and to perpetuate the location of said corner, at the exact location thereof, a permanent marker was placed consisting of a cast iron monument over the concrete monument (laying flat)

AND on the 17th day of May, 2011, said permanent marker was found broken and was replaced with a new cast iron monument with sign and post set on south side and ties were updated.

Updated reference ties are as shown below.



Revision Date
10/10/11

N.A.D. 1983 Coordinates
 (1996 Adjustment)

County Project Coordinates	
Northing	169623.1580
Easting	502871.3752
Date	12/20/01

I hereby certify that this United States public land survey monument record is correct and complete to the best of my knowledge and belief.

Larry D. Hoium Date 10/10/11

Larry D. Hoium, Anoka County Surveyor
 Minnesota License Number 18165