

# CERTIFICATE OF LOCATION OF GOVERNMENT CORNER

County of Anoka

State of Minnesota

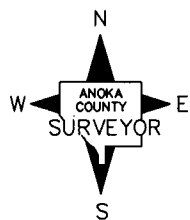
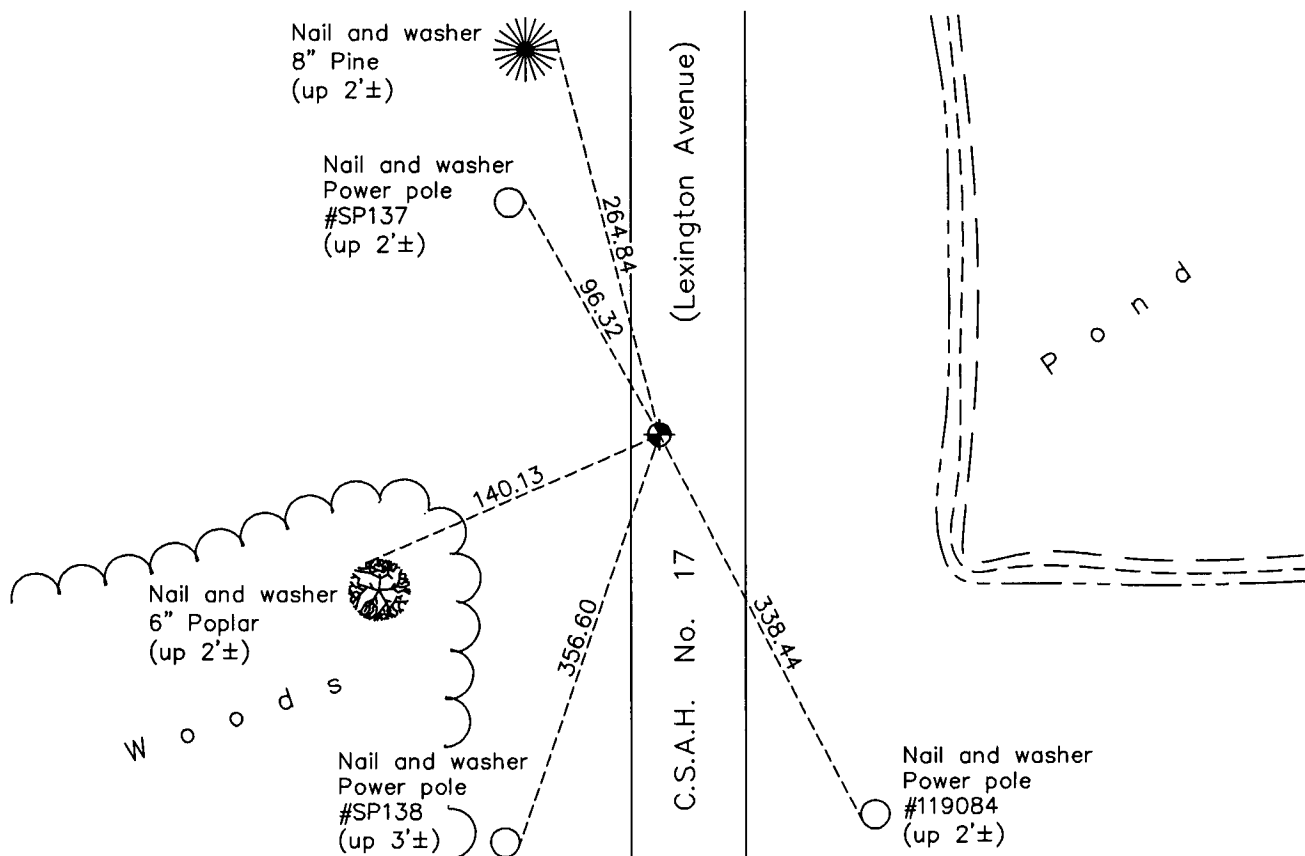
## East 1/4 Corner of Sec. 35 Township 32 Range 23

On the 8th day of August, 1969, the described corner was evidenced by area resurvey

and to perpetuate the location of said corner, at the exact location thereof, a permanent marker was placed consisting of a cast iron monument

AND on the 21st day of April, 2011, said permanent marker was found and the ties  
were updated

Updated reference ties are as shown below.



Revision Date

10/13/11

N.A.D. 1983 Coordinates  
(1996 Adjustment)

County Project Coordinates

Northing 166798.1632

Easting 526720.0037

Date 12/13/01

I hereby certify that this United States public land survey monument record is correct and complete to the best of my knowledge and belief.

*Larry D. Hoium* Date 10/13/11

Larry D. Hoium, Anoka County Surveyor

Minnesota License Number 18165