

CERTIFICATE OF LOCATION OF GOVERNMENT CORNER

County of Anoka

State of Minnesota

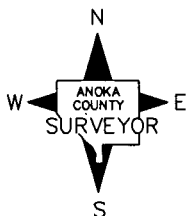
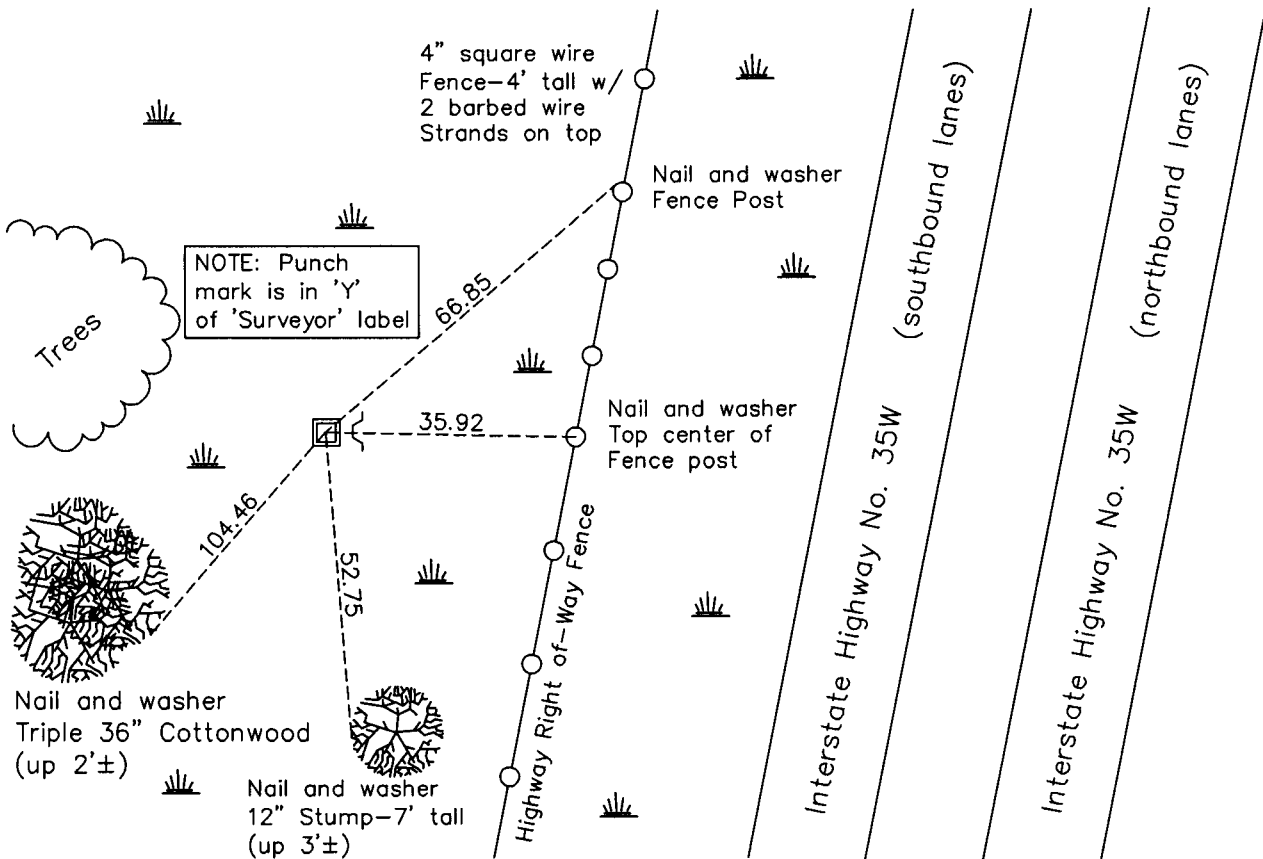
Northwest Corner of Sec. 1 Township 31 Range 22

On the 16th day of July, 1962, the described corner was evidenced by a 4" concrete monument

and to perpetuate the location of said corner, at the exact location thereof, a permanent marker was placed consisting of the same concrete monument with a sign and post on the south side

AND on the 17th day of March, 2011, said permanent marker was removed and replaced with a red & white 2" square steel Telspar monument, up 1'±, with a 'County Surveyor' cap punched.

Updated reference ties are as shown below.



Revision Date
7/20/11

N.A.D. 1983 Coordinates
(1996 Adjustment)

County Project Coordinates	
Northing	<u>164130.4048</u>
Easting	<u>558383.3469</u>
Date	<u>2/18/98</u>

I hereby certify that this United States public land survey monument record is correct and complete to the best of my knowledge and belief.

Larry D. Hoium Date 7/20/11

Larry D. Hoium, Anoka County Surveyor

Minnesota License Number 18165