

CERTIFICATE OF LOCATION OF GOVERNMENT CORNER

County of Anoka

State of Minnesota

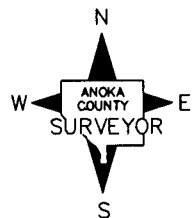
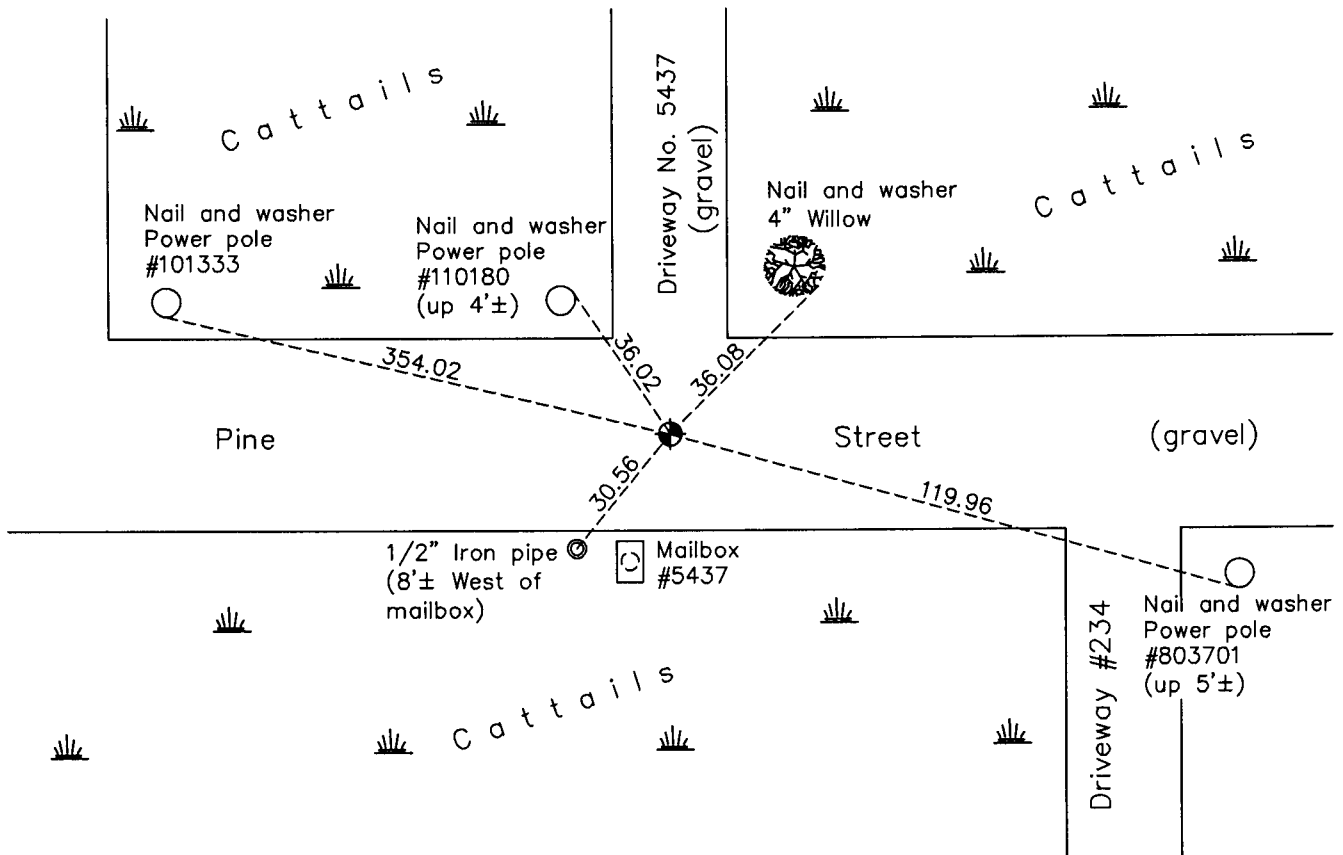
North 1/4 Corner of Sec. 6 Township 31 Range 22

On the 21st day of July, 1969, the described corner was evidenced by a 3/4" iron pipe set by Jim Kurth

and to perpetuate the location of said corner, at the exact location thereof, a permanent marker was placed consisting of a cast iron monument (down 0.4'±)

AND on the 5th day of April, 2011, said permanent marker was removed and replaced with a new extendible cast iron monument down 0.6'±

Updated reference ties are as shown below.



Revision Date

7/20/11

N.A.D. 1983 Coordinates
(1996 Adjustment)

County Project Coordinates	
Northing	164108.4597
Easting	534780.0262
Date	3/02/98

I hereby certify that this United States public land survey monument record is correct and complete to the best of my knowledge and belief.

Larry D. Hoium Date 7/20/11

Larry D. Hoium, Anoka County Surveyor

Minnesota License Number 18165