

CERTIFICATE OF LOCATION OF GOVERNMENT CORNER

County of Anoka

State of Minnesota

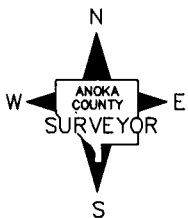
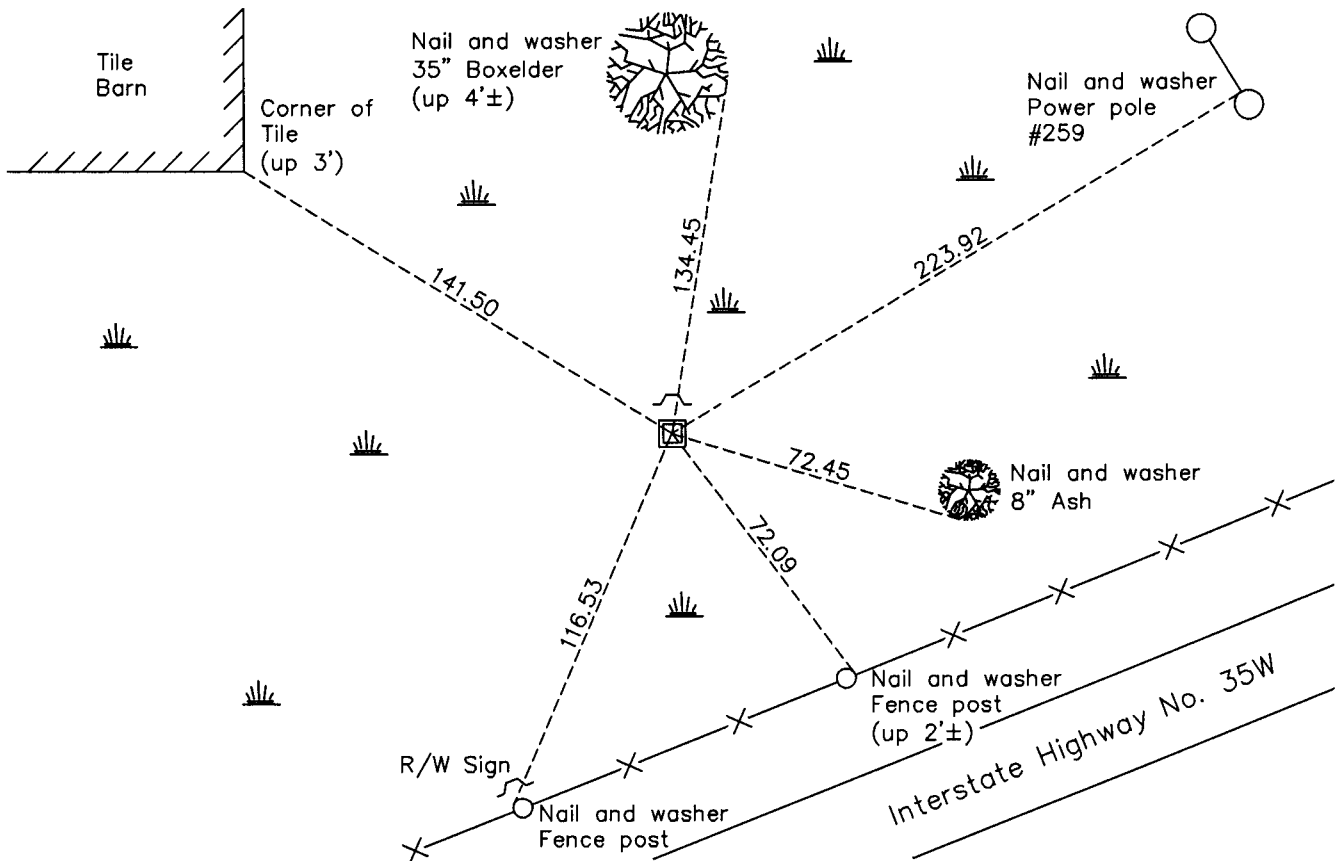
Southwest Corner of Sec. 2 Township 31 Range 22

On the 7th day of August, 1969, the described corner was evidenced by a 6" X 4" oval stone

and to perpetuate the location of said corner, at the exact location thereof, a permanent marker was placed consisting of the same oval stone with a 1" iron pipe and a sign and post on the north side

AND on the 15th day of March, 2011, said permanent marker was removed and replaced with a red & white 2" square steel Telspar monument, up 1'±, with a 'County Surveyor' cap punched.

Updated reference ties are as shown below.



Revision Date

7/20/11

N.A.D. 1983 Coordinates
(1996 Adjustment)

County Project Coordinates	
Northing	158911.1346
Easting	553010.1196
Date	3/29/06

I hereby certify that this United States public land survey monument record is correct and complete to the best of my knowledge and belief.

Larry D. Hoium Date 7/20/11

Larry D. Hoium, Anoka County Surveyor
Minnesota License Number 18165