

CERTIFICATE OF LOCATION OF GOVERNMENT CORNER

County of Anoka

State of Minnesota

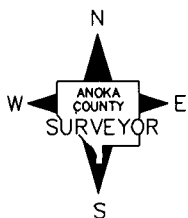
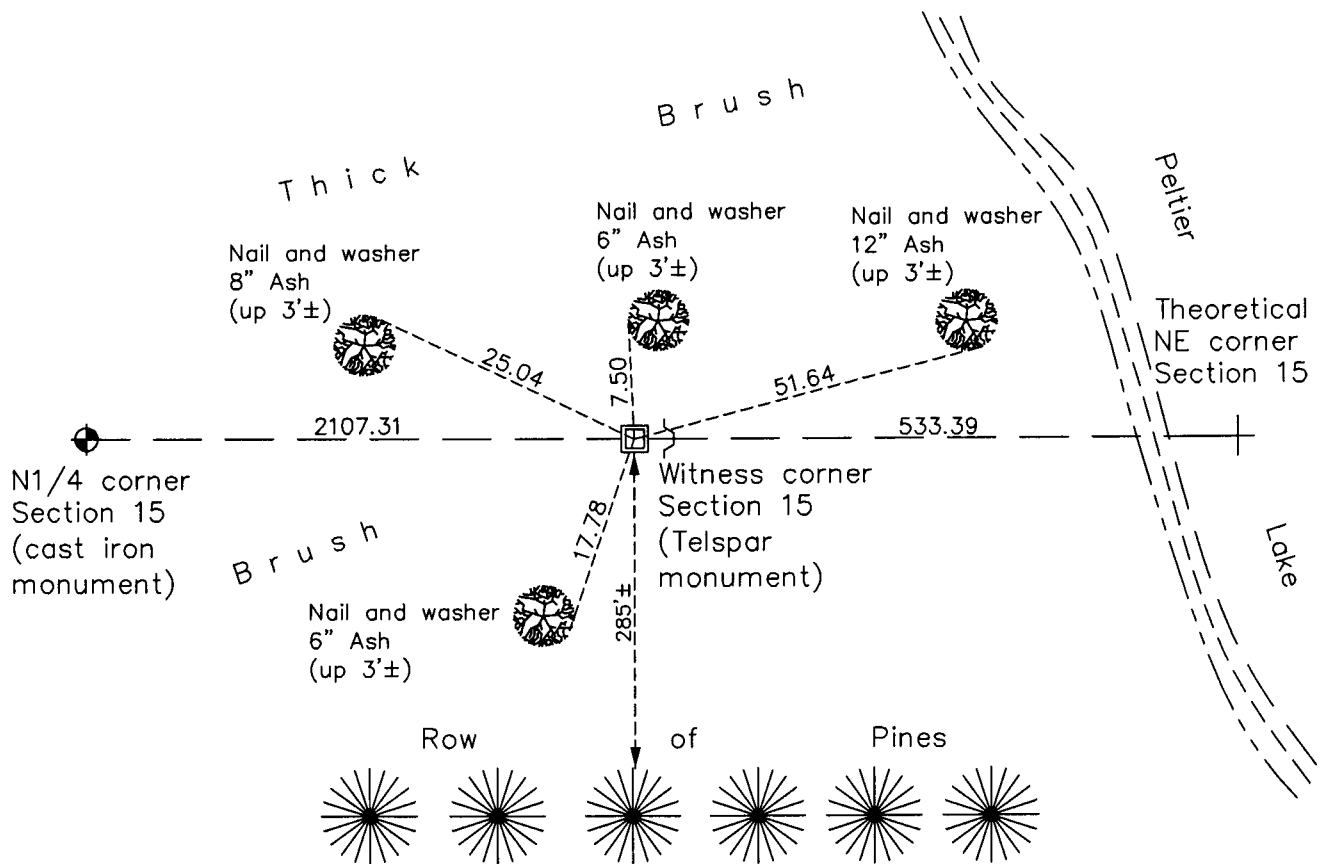
Witness Corner of Sec. 15 Township 31 Range 22
(on north line of section)

On the 25th day of March, 1964, the described corner was evidenced by area resurvey

and to perpetuate the location of said corner, at the exact location thereof, a permanent marker was placed consisting of a red and white iron pipe set in concrete

AND on the 29th day of March, 2011, said permanent marker was replaced with a 2" sq. steel Telspar monument up 1'± with a 'County Surveyor' cap punched & sign & post on east side

Updated reference ties are as shown below.



Revision Date
8/01/11

N.A.D. 1983 Coordinates
(1996 Adjustment)

County Project Coordinates	
Northing	153596.0415
Easting	552428.9417
Date	2/06/98

I hereby certify that this United States public land survey monument record is correct and complete to the best of my knowledge and belief.

Larry D. Hoium Date 8/01/11

Larry D. Hoium, Anoka County Surveyor

Minnesota License Number 18165