

CERTIFICATE OF LOCATION OF GOVERNMENT CORNER

County of Anoka

State of Minnesota

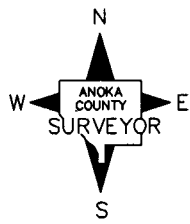
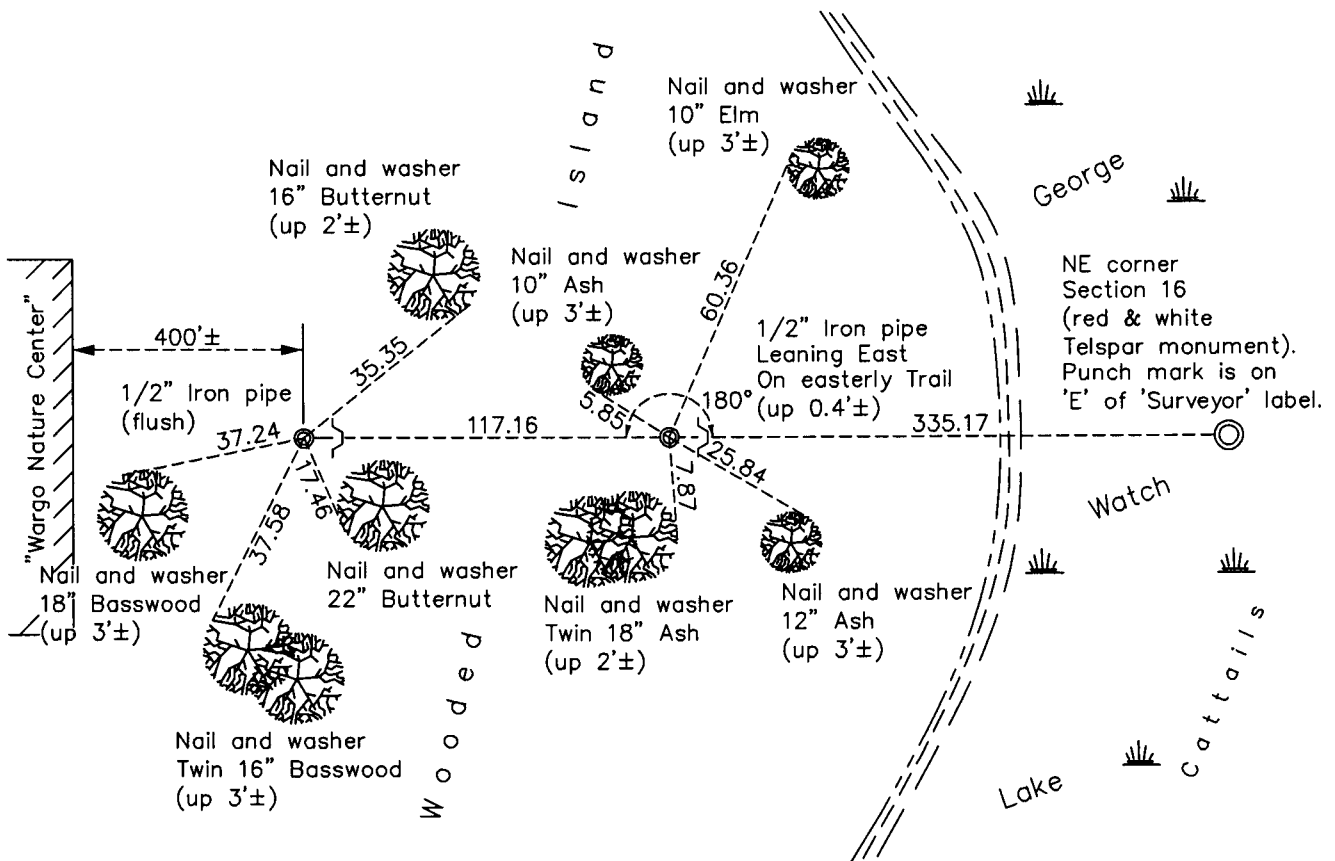
Northeast Corner of Sec. 16 Township 31 Range 22

On the 2nd day of March, 1964, the described corner was evidenced by a 2" iron pipe

and to perpetuate the location of said corner, at the exact location thereof, a permanent marker was placed consisting of a red and white iron pipe with 1/2" iron pipes and signs and posts as reference ties to the West

AND on the 16th day of March, 2011, said permanent marker was removed and replaced with a red & white 2" square steel Telspar monument with 'County Surveyor' cap punched.

Updated reference ties are as shown below.



Revision Date
7/20/11

N.A.D. 1983 Coordinates
(1996 Adjustment)

County Project Coordinates	
Northing	153579.4150
Easting	547687.9660
Date	2/09/98

I hereby certify that this United States public land survey monument record is correct and complete to the best of my knowledge and belief.

Larry D. Hoium Date 7/20/11

Larry D. Hoium, Anoka County Surveyor
Minnesota License Number 18165