

CERTIFICATE OF LOCATION OF GOVERNMENT CORNER

County of Anoka

State of Minnesota

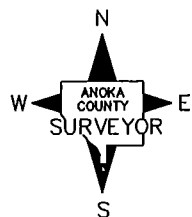
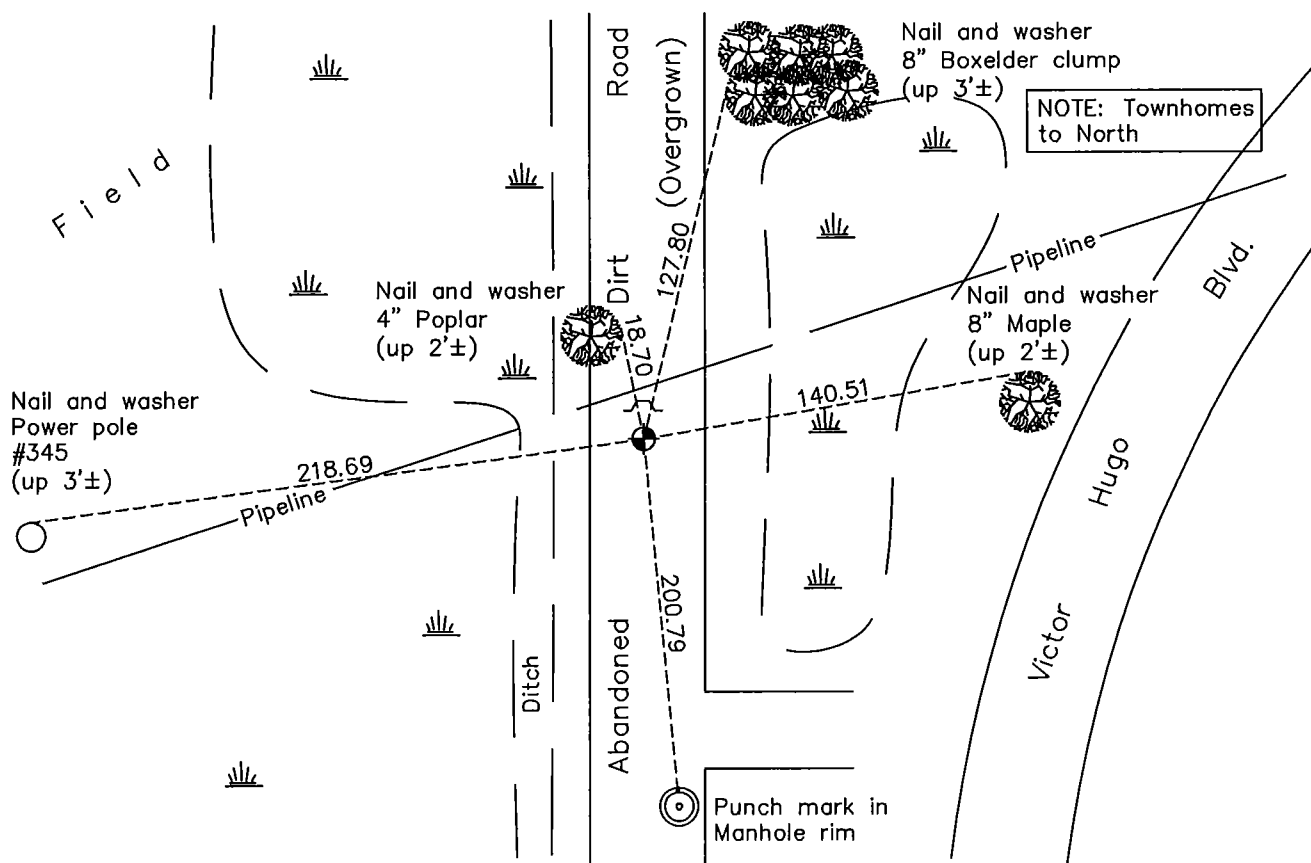
East 1/4 Corner of Sec. 24 Township 31 Range 22

On the 4th day of September, 1968, the described corner was evidenced by a 1" iron pipe

and to perpetuate the location of said corner, at the exact location thereof, a permanent marker was placed consisting of a cast iron monument 2'± west of centerline and 0.5'± below surface

AND on the 18th day of May, 2011, said permanent marker was found laying down 1.0'± below surface with a sign and post on north side. Monument was reset and ties were updated.

Updated reference ties are as shown below.



Revision Date
8/17/11

N.A.D. 1983 Coordinates
(1996 Adjustment)

County Project Coordinates	
Northing	145742.6851
Easting	563550.5722
Date	4/03/98

I hereby certify that this United States public land survey monument record is correct and complete to the best of my knowledge and belief.

Larry D. Hoium Date 8/18/11

Larry D. Hoium, Anoka County Surveyor

Minnesota License Number 18165