

# CERTIFICATE OF LOCATION OF GOVERNMENT CORNER

County of Anoka

State of Minnesota

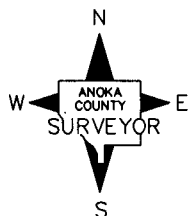
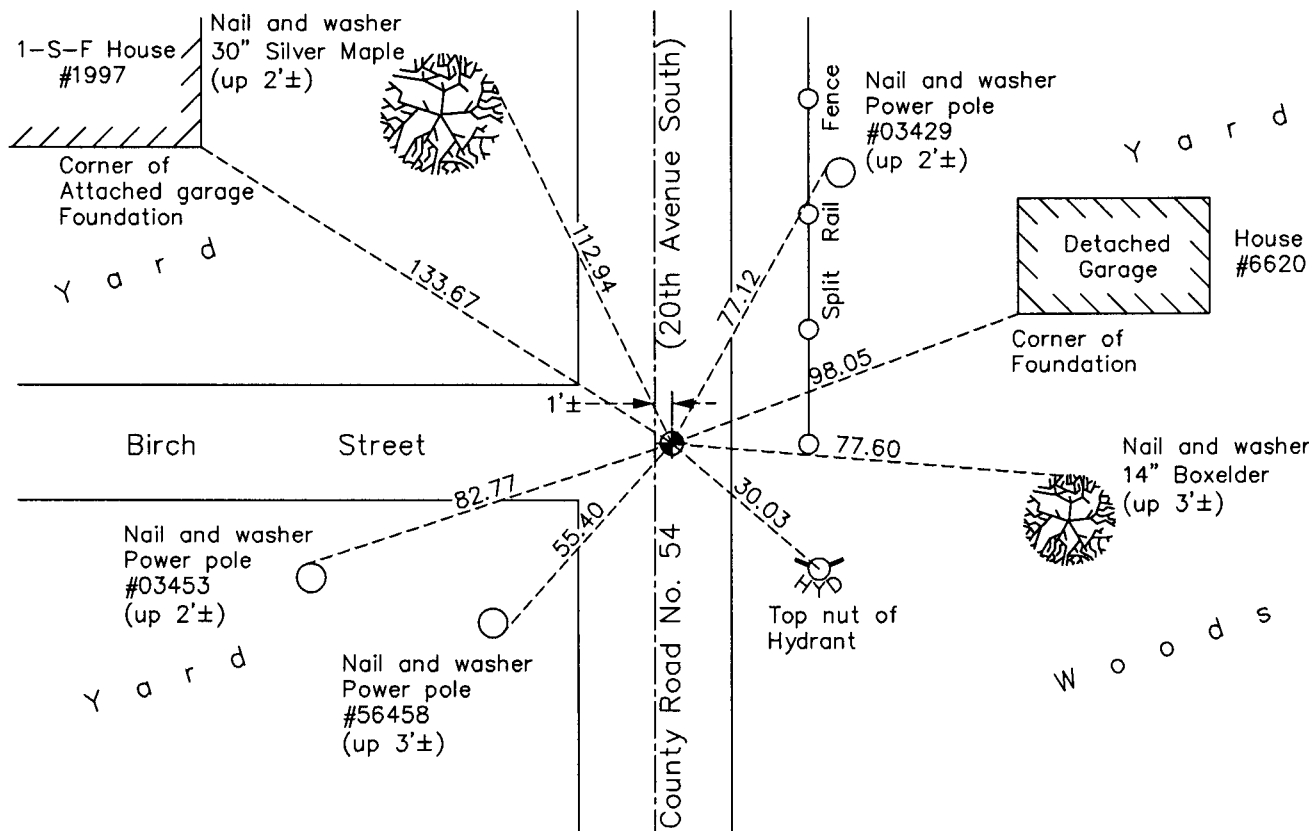
## East 1/4 Corner of Sec. 26 Township 31 Range 22

On the 13th day of August, 1964, the described corner was evidenced by a 1/2" rod  
from Jim Kurth ties

and to perpetuate the location of said corner, at the exact location thereof, a permanent marker  
was placed consisting of a cast iron monument

AND on the 20th day of June, 2011, said permanent marker was found and raised to  
0.1'± below the surface after road construction and the ties were updated

Updated reference ties are as shown below.



Revision Date

7/27/11

N.A.D. 1983 Coordinates  
(1996 Adjustment)

County Project Coordinates	
Northing	140340.9511
Easting	558297.0748
Date	3/25/98

I hereby certify that this United States public land survey monument record is correct and complete to the best of my knowledge and belief.

*Larry D. Hoium* Date 7/27/11

Larry D. Hoium, Anoka County Surveyor  
Minnesota License Number 18165