

CERTIFICATE OF LOCATION OF GOVERNMENT CORNER

County of Anoka

State of Minnesota

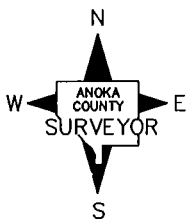
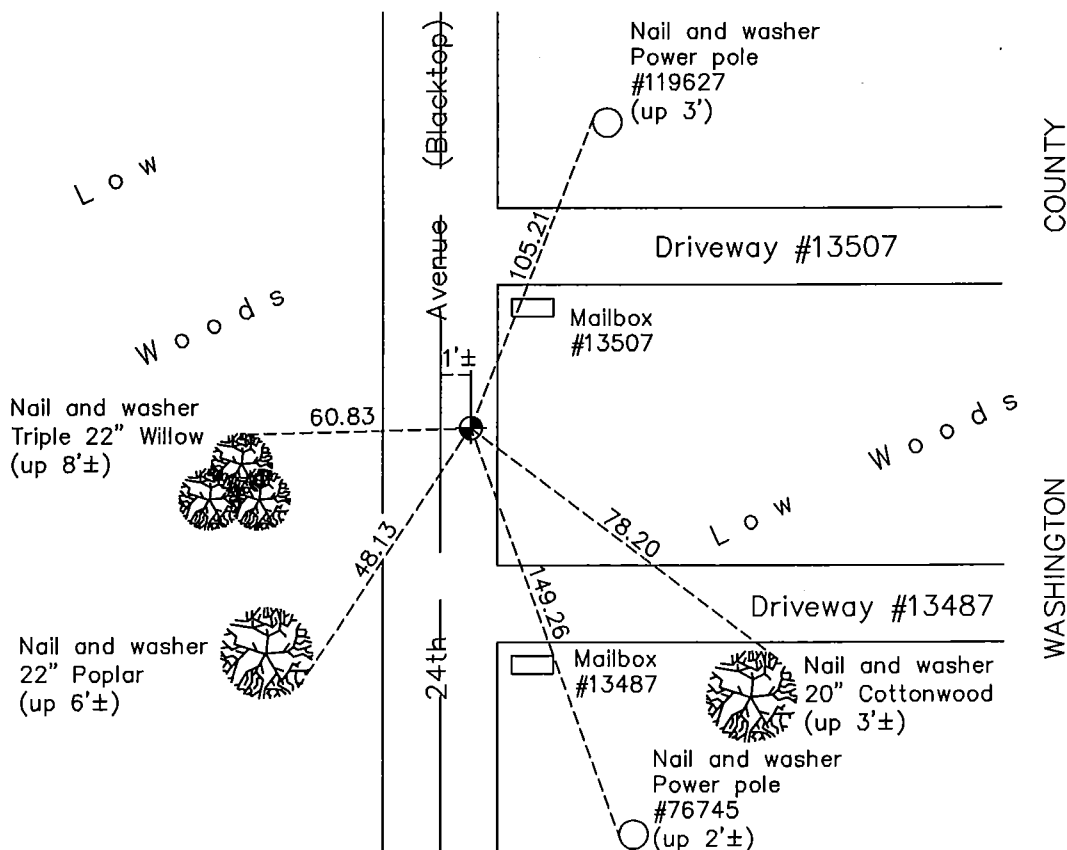
East 1/4 Corner of Sec. 25 Township 31 Range 22

On the 22nd day of March, 1973, the described corner was evidenced by a Washington County cast iron monument

and to perpetuate the location of said corner, at the exact location thereof, a permanent marker was placed consisting of the same cast iron monument

AND on the 18th day of May, 2011, said permanent marker was found to be a partial CIM down 1.3' with a rebar down 0.8'± over it. Replaced both with an Anoka Co. CIM and updated ties.

Updated reference ties are as shown below.



Revision Date
8/18/11

N.A.D. 1983 Coordinates
(1996 Adjustment)

| County Project Coordinates | |
|----------------------------|-------------|
| Northing | 140345.1724 |
| Easting | 563550.7209 |
| Date | 4/08/98 |

I hereby certify that this United States public land survey monument record is correct and complete to the best of my knowledge and belief.

Larry D. Hoium Date 8/18/11

Larry D. Hoium, Anoka County Surveyor
Minnesota License Number 18165