

CERTIFICATE OF LOCATION OF GOVERNMENT CORNER

County of Anoka

State of Minnesota

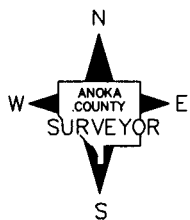
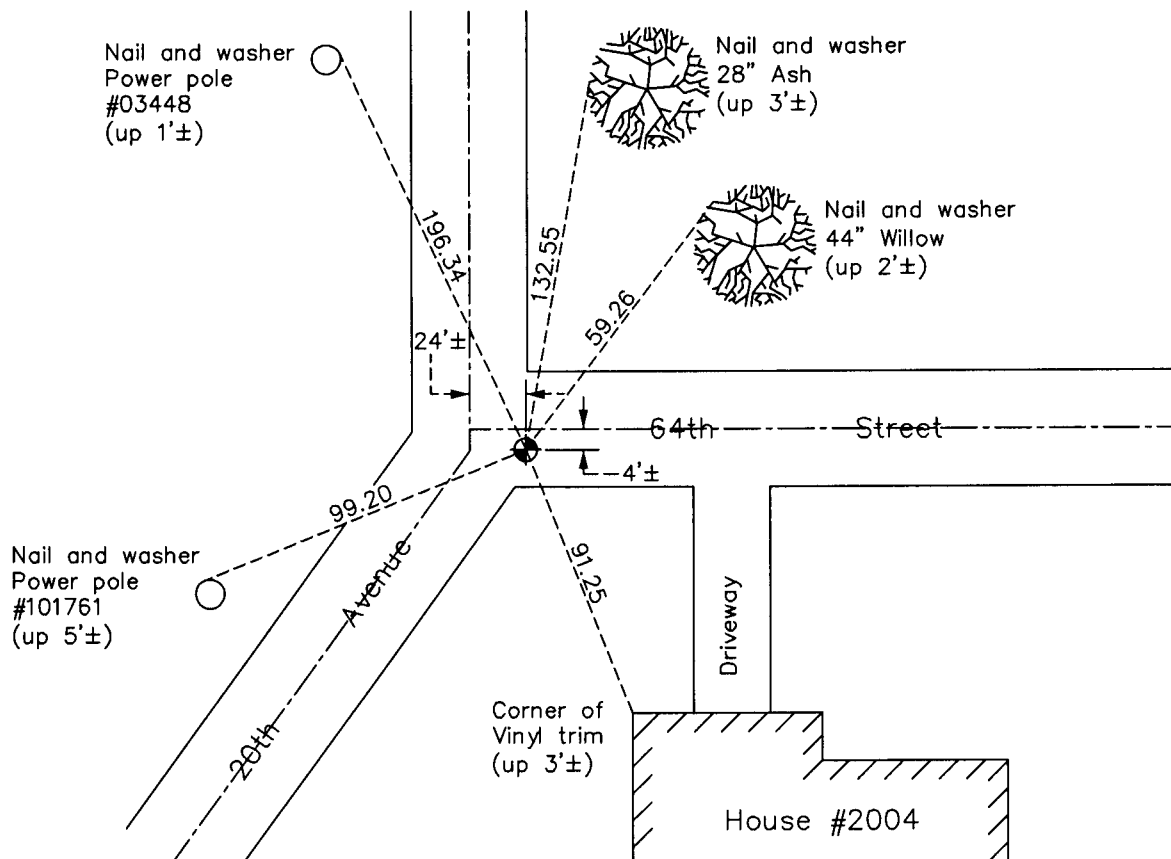
Northwest Corner of Sec. 36 Township 31 Range 22

On the 25th day of September, 1969, the described corner was evidenced by a 1" iron pipe

and to perpetuate the location of said corner, at the exact location thereof, a permanent marker was placed consisting of a cast iron monument

AND on the 20th day of June, 2011, said permanent marker was found and raised to 0.1'± below the surface after road construction and the ties were updated

Updated reference ties are as shown below.



Revision Date

7/27/11

N.A.D. 1983 Coordinates
(1996 Adjustment)

County Project Coordinates	
Northing	137689.1817
Easting	558315.1748
Date	3/25/98

I hereby certify that this United States public land survey monument record is correct and complete to the best of my knowledge and belief.

Larry D. Hoium Date 7/27/11

Larry D. Hoium, Anoka County Surveyor
Minnesota License Number 18165