

CERTIFICATE OF LOCATION OF GOVERNMENT CORNER

County of Anoka

State of Minnesota

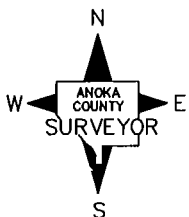
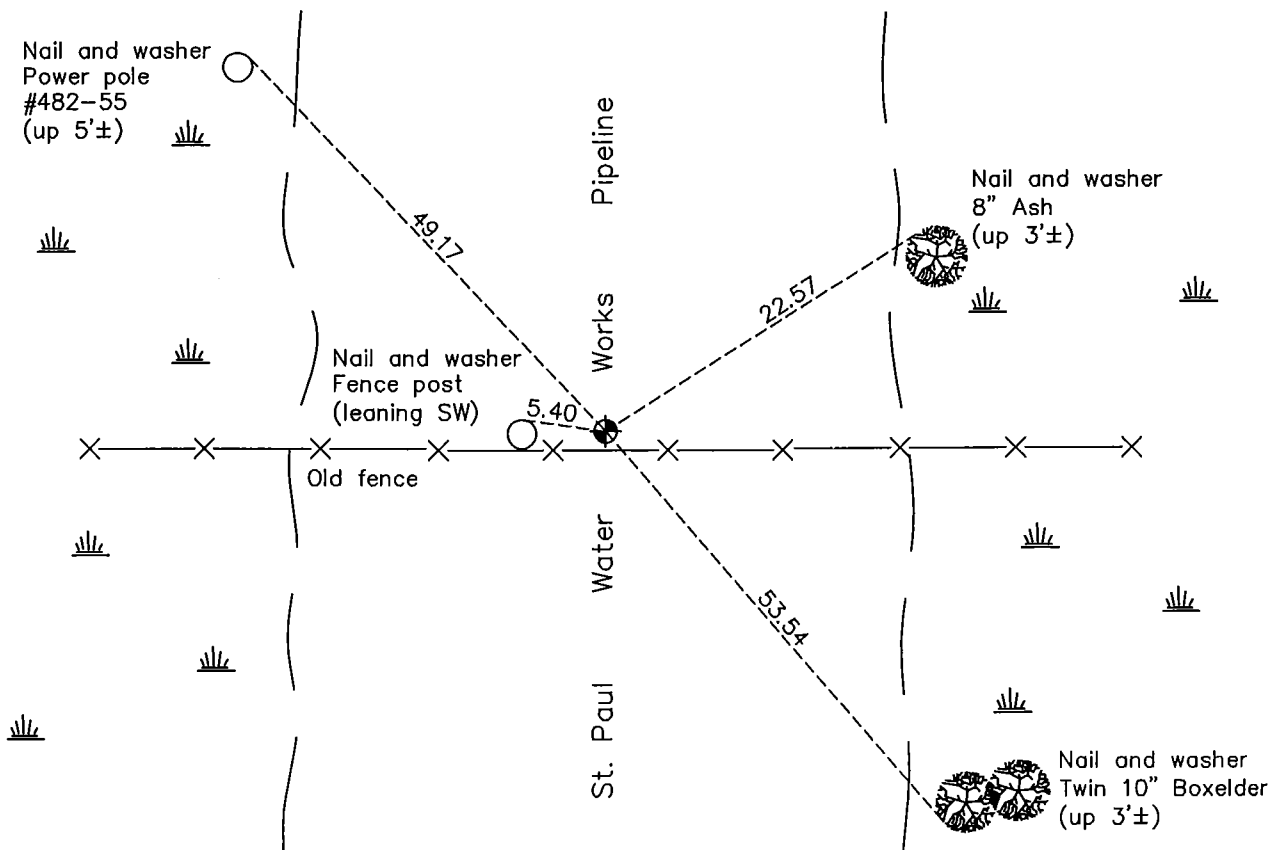
Northwest Corner of Sec. 35 Township 31 Range 22

On the 23rd day of June, 1965, the described corner was evidenced by a 1/2" iron pipe

and to perpetuate the location of said corner, at the exact location thereof, a permanent marker was placed consisting of a cast iron monument

AND on the 20th day of April, 2011, said permanent marker was not found. Found bent I.P. down 0.5'± w/ chisel hole & etched lines in conc. pipe. Set 1/2"X4" I.P. w/ A.C. cap in drill hole.

Updated reference ties are as shown below.



Revision Date
8/18/11

N.A.D. 1983 Coordinates
(1996 Adjustment)

County Project Coordinates	
Northing	<u>137752.5951</u>
Easting	<u>553066.7303</u>
Date	<u>4/06/98</u>

I hereby certify that this United States public land survey monument record is correct and complete to the best of my knowledge and belief.

Larry D. Hoium Date 8/18/11

Larry D. Hoium, Anoka County Surveyor
Minnesota License Number 18165