

# CERTIFICATE OF LOCATION OF GOVERNMENT CORNER

County of Anoka

State of Minnesota

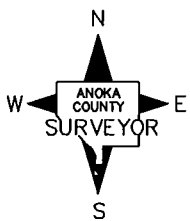
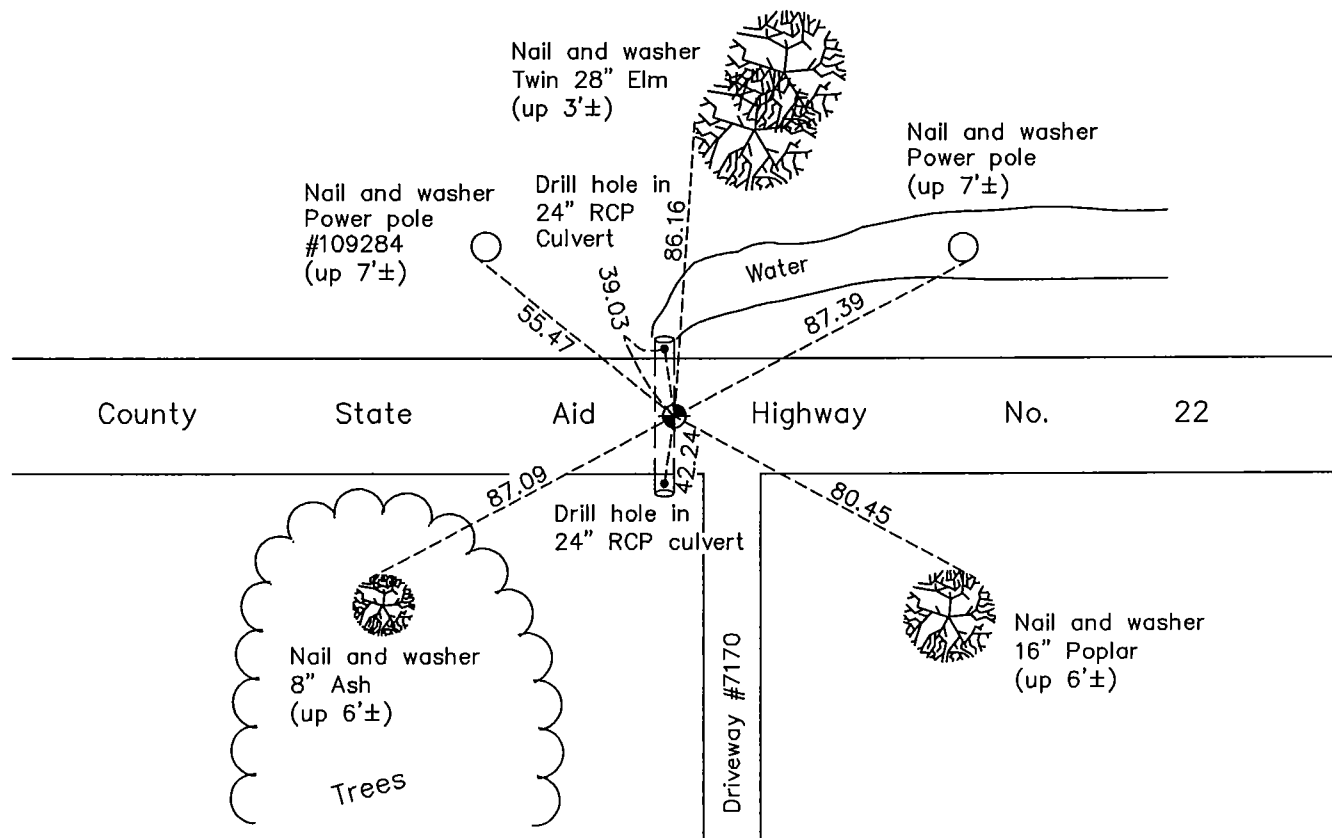
## Northwest Corner of Sec. 27 Township 33 Range 25

On the 15th day of June, 1966, the described corner was evidenced by area resurvey

and to perpetuate the location of said corner, at the exact location thereof, a permanent marker was placed consisting of a cast iron monument

AND on the 12th day of August, 2011, said permanent marker was replaced with a slimline cast iron monument set in concrete road surface after construction and the ties were updated

Updated reference ties are as shown below.



Revision Date  
8/16/11

N.A.D. 1983 Coordinates  
(1996 Adjustment)

County Project Coordinates	
Northing	206774.6768
Easting	452886.4576
Date	9/03/02

I hereby certify that this United States public land survey monument record is correct and complete to the best of my knowledge and belief.

*Larry D. Hoium* Date 8/16/11

Larry D. Hoium, Anoka County Surveyor  
Minnesota License Number 18165