

# CERTIFICATE OF LOCATION OF GOVERNMENT CORNER

County of Anoka

State of Minnesota

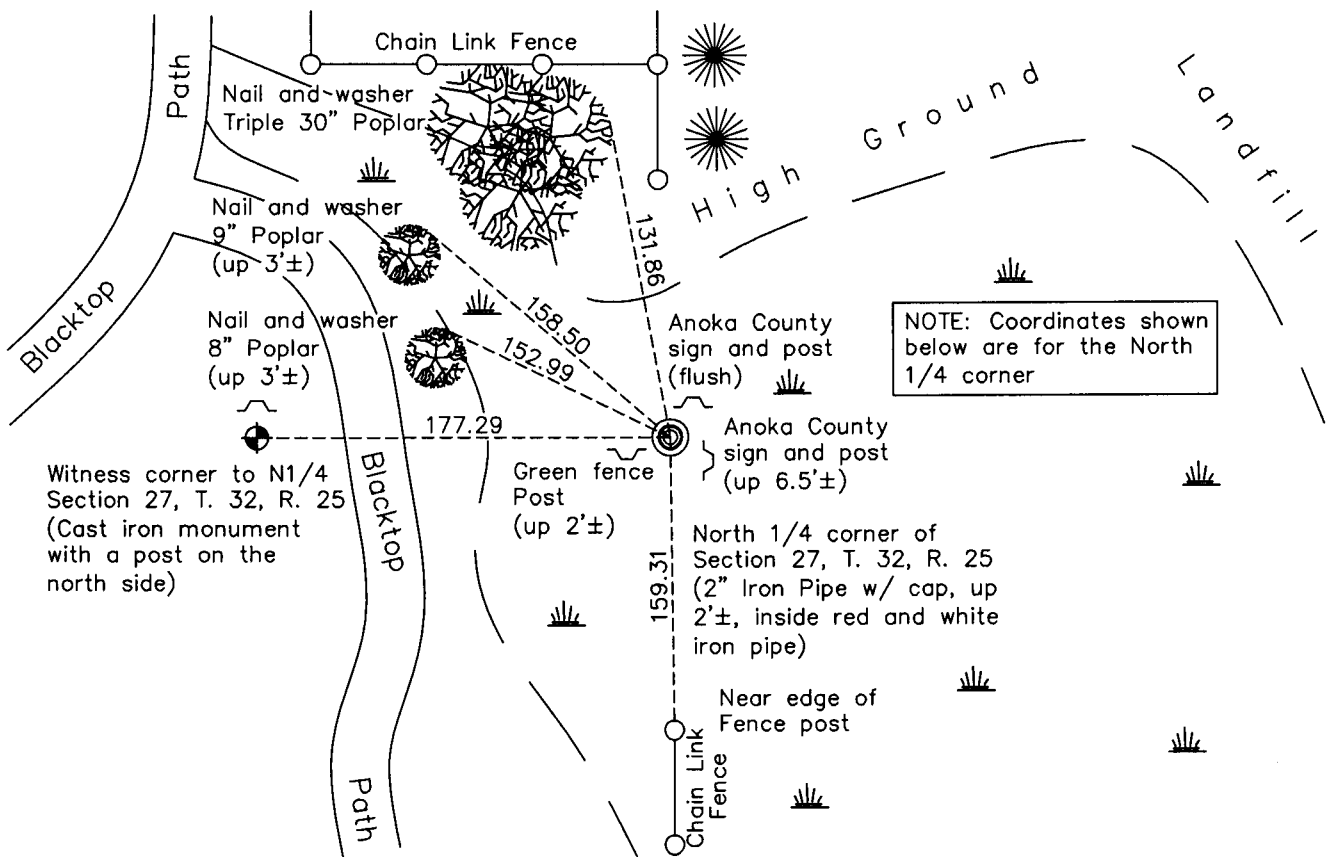
## North 1/4 Corner of Sec. 27 Township 32 Range 25

On the 17th day of September, 1975, the described corner was evidenced by area resurvey

and to perpetuate the location of said corner, at the exact location thereof, a permanent marker was placed consisting of a red and white iron pipe up 1' with a cast iron monument set as a witness corner to the west

AND on the 2nd day of March, 2011, said permanent marker was found under water. Set 2" iron pipe, up 2'±, with punch mark in 'County Surveyor' cap inside found red & white iron pipe.

Updated reference ties are as shown below.



NOTE: Coordinates shown below are for the North 1/4 corner

ANOKA COUNTY SURVEYOR

Revision Date

7/19/11

N.A.D. 1983 Coordinates  
(1996 Adjustment)

County Project Coordinates	
Northing	175093.6489
Easting	455468.6027
Date	5/04/00

I hereby certify that this United States public land survey monument record is correct and complete to the best of my knowledge and belief.

*Larry D. Hoium* Date 7/19/11

Larry D. Hoium, Anoka County Surveyor

Minnesota License Number 18165