

CERTIFICATE OF LOCATION OF GOVERNMENT CORNER

County of Anoka

State of Minnesota

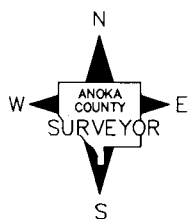
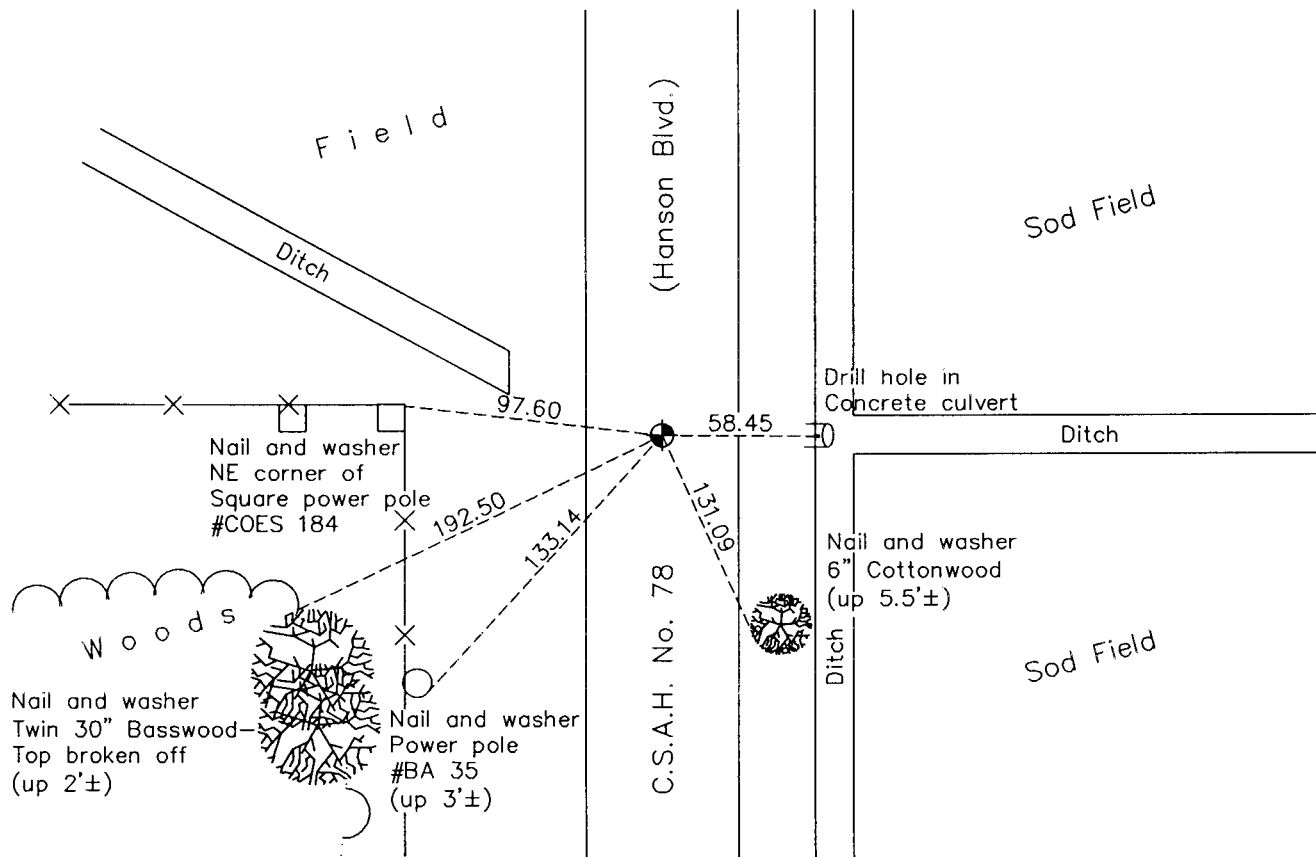
Northeast Corner of Sec. 10 Township 32 Range 24

On the 16th day of August, 1962, the described corner was evidenced by area resurvey

and to perpetuate the location of said corner, at the exact location thereof, a permanent marker was placed consisting of a cast iron monument

AND on the 8th day of June, 2012, said permanent marker was found missing. Set new cast iron monument and updated ties on August 29, 2012.

Updated reference ties are as shown below.



N.A.D. 1983 Coordinates
(1996 Adjustment)

County Project Coordinates

Northing 190601.2492

Easting 489920.5248

Date 8/04/00

Revision Date

12/17/12

I hereby certify that this United States public land survey monument record is correct and complete to the best of my knowledge and belief.

Larry D. Hoium Date 12/17/12

Larry D. Hoium, Anoka County Surveyor

Minnesota License Number 18165