

CERTIFICATE OF LOCATION OF GOVERNMENT CORNER

County of Anoka

State of Minnesota

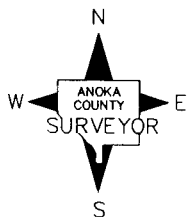
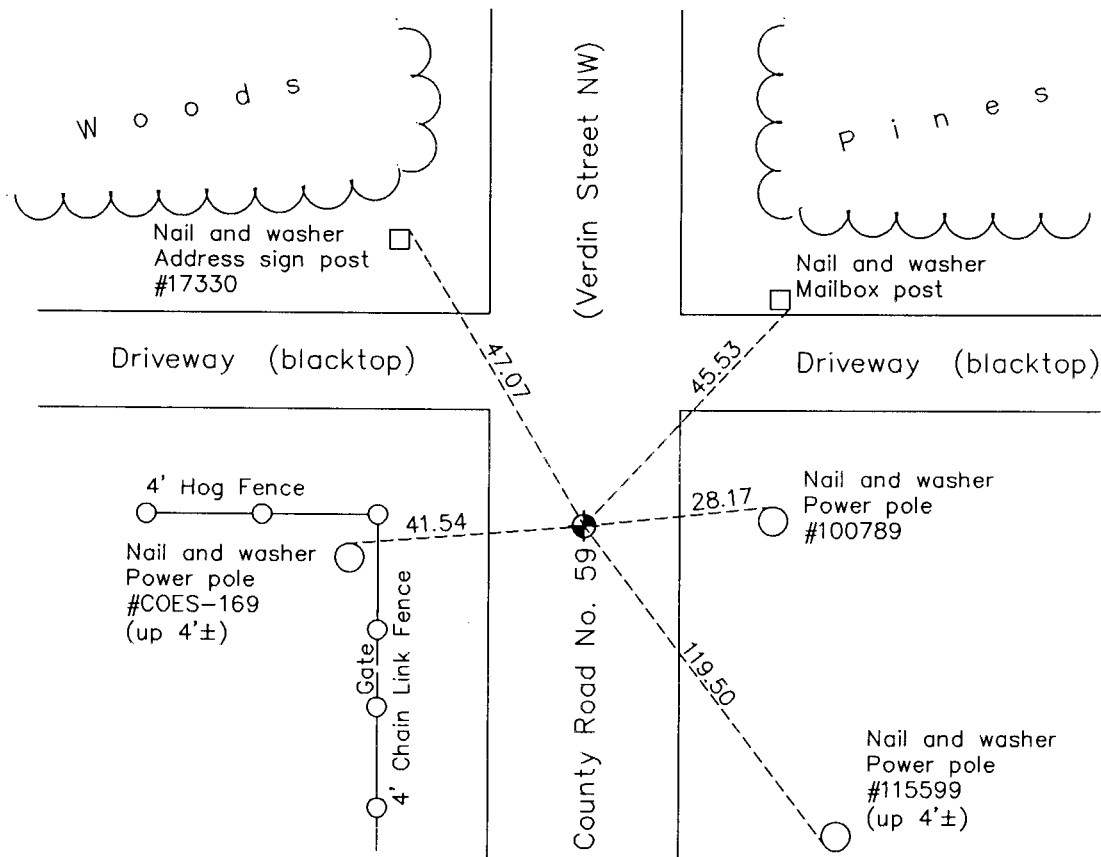
Southeast Corner of Sec. 4 Township 32 Range 24

On the 3rd day of November, 1961, the described corner was evidenced by area resurvey

and to perpetuate the location of said corner, at the exact location thereof, a permanent marker was placed consisting of a cast iron monument

AND on the 17th day of August, 2012, said permanent marker was raised to the surface after overlay of road was completed

Updated reference ties are as shown below.



N.A.D. 1983 Coordinates
(1996 Adjustment)

| County Project Coordinates | |
|----------------------------|-------------|
| Northing | 190756.5086 |
| Easting | 484630.8647 |
| Date | 7/13/00 |

Revision Date
12/17/12

I hereby certify that this United States public land survey monument record is correct and complete to the best of my knowledge and belief.

Larry D. Hoium Date 12/17/12

Larry D. Hoium, Anoka County Surveyor

Minnesota License Number 18165