

CERTIFICATE OF LOCATION OF GOVERNMENT CORNER

County of Anoka

State of Minnesota

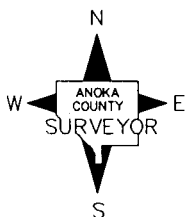
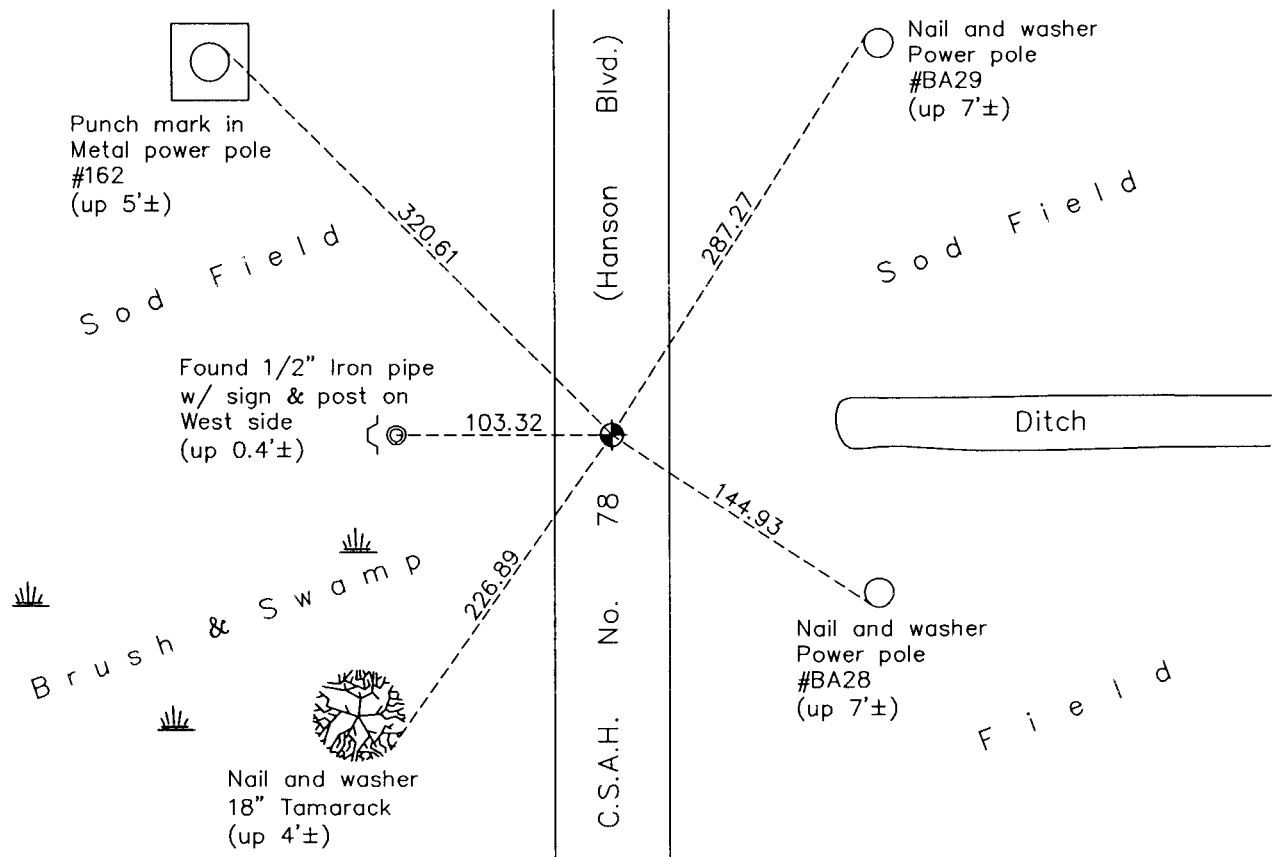
West 1/4 Corner of Sec. 11 Township 32 Range 24

On the 3rd day of January, 1963, the described corner was evidenced by area resurvey

and to perpetuate the location of said corner, at the exact location thereof, a permanent marker was placed consisting of a cast iron monument with P.K. Nails 2.00' North and East

AND on the 8th day of June, 2012, said permanent marker was found missing. Set new cast iron monument and updated ties on August 27, 2012.

Updated reference ties are as shown below.



N.A.D. 1983 Coordinates
(1996 Adjustment)

Revision Date
12/17/12

County Project Coordinates	
Northing	<u>188113.0049</u>
Easting	<u>489910.9966</u>
Date	<u>10/01/93</u>

I hereby certify that this United States public land survey monument record is correct and complete to the best of my knowledge and belief.

Larry D. Hoium Date 12/17/12

Larry D. Hoium, Anoka County Surveyor

Minnesota License Number 18165