

CERTIFICATE OF LOCATION OF GOVERNMENT CORNER

County of Anoka

State of Minnesota

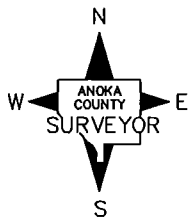
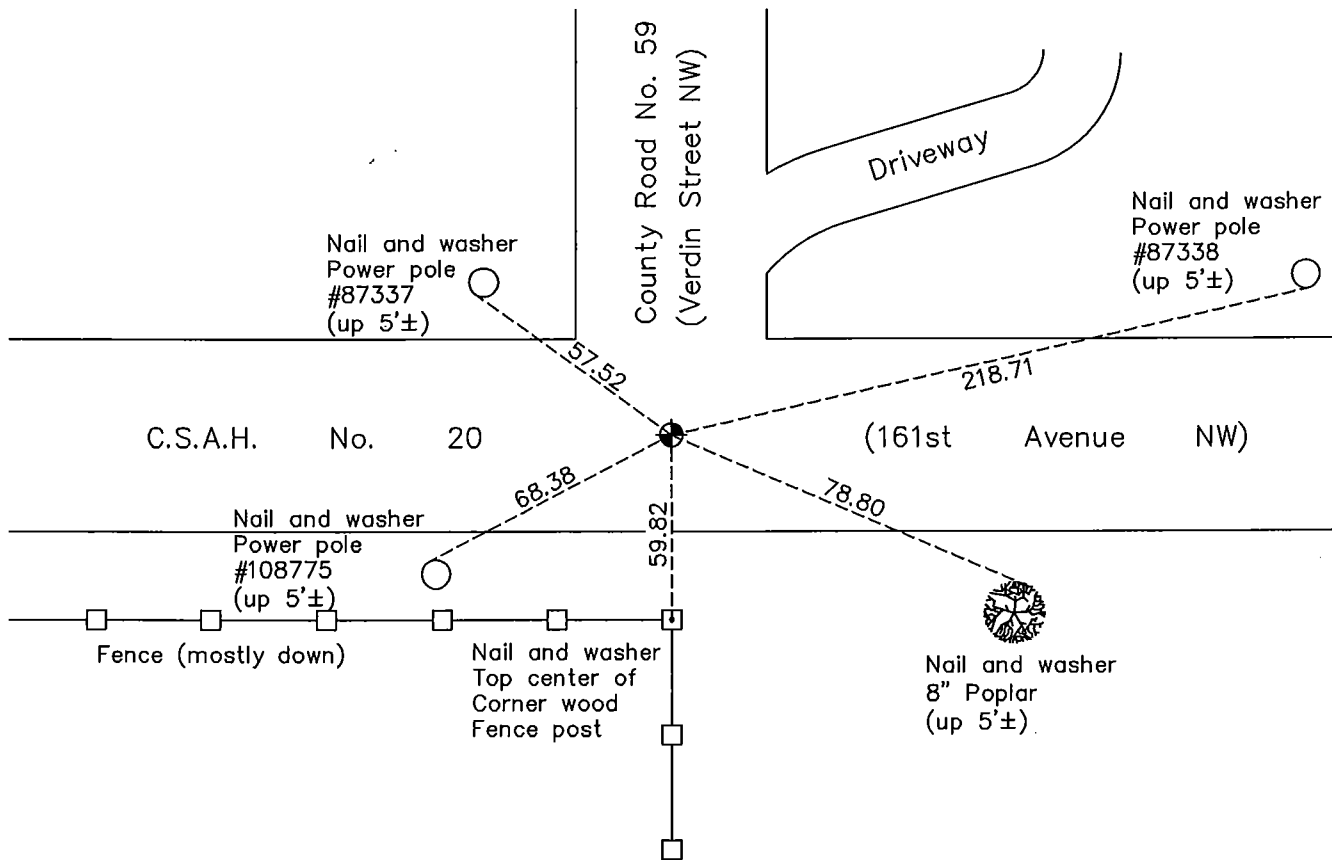
West 1/4 Corner of Sec. 15 Township 32 Range 24

On the 28th day of January, 1964, the described corner was evidenced by area resurvey

and to perpetuate the location of said corner, at the exact location thereof, a permanent marker was placed consisting of a cast iron monument

AND on the 26th day of March, 2012, said permanent marker was replaced with a new cast iron monument and the ties were updated.

Updated reference ties are as shown below.



Revision Date
3/30/12

N.A.D. 1983 Coordinates
(1996 Adjustment)

County Project Coordinates	
Northing	183005.7747
Easting	484674.4542
Date	7/13/00

I hereby certify that this United States public land survey monument record is correct and complete to the best of my knowledge and belief.

Larry D. Hoium Date 3/30/12

Larry D. Hoium, Anoka County Surveyor

Minnesota License Number 18165