

CERTIFICATE OF LOCATION OF GOVERNMENT CORNER

County of Anoka

State of Minnesota

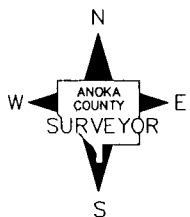
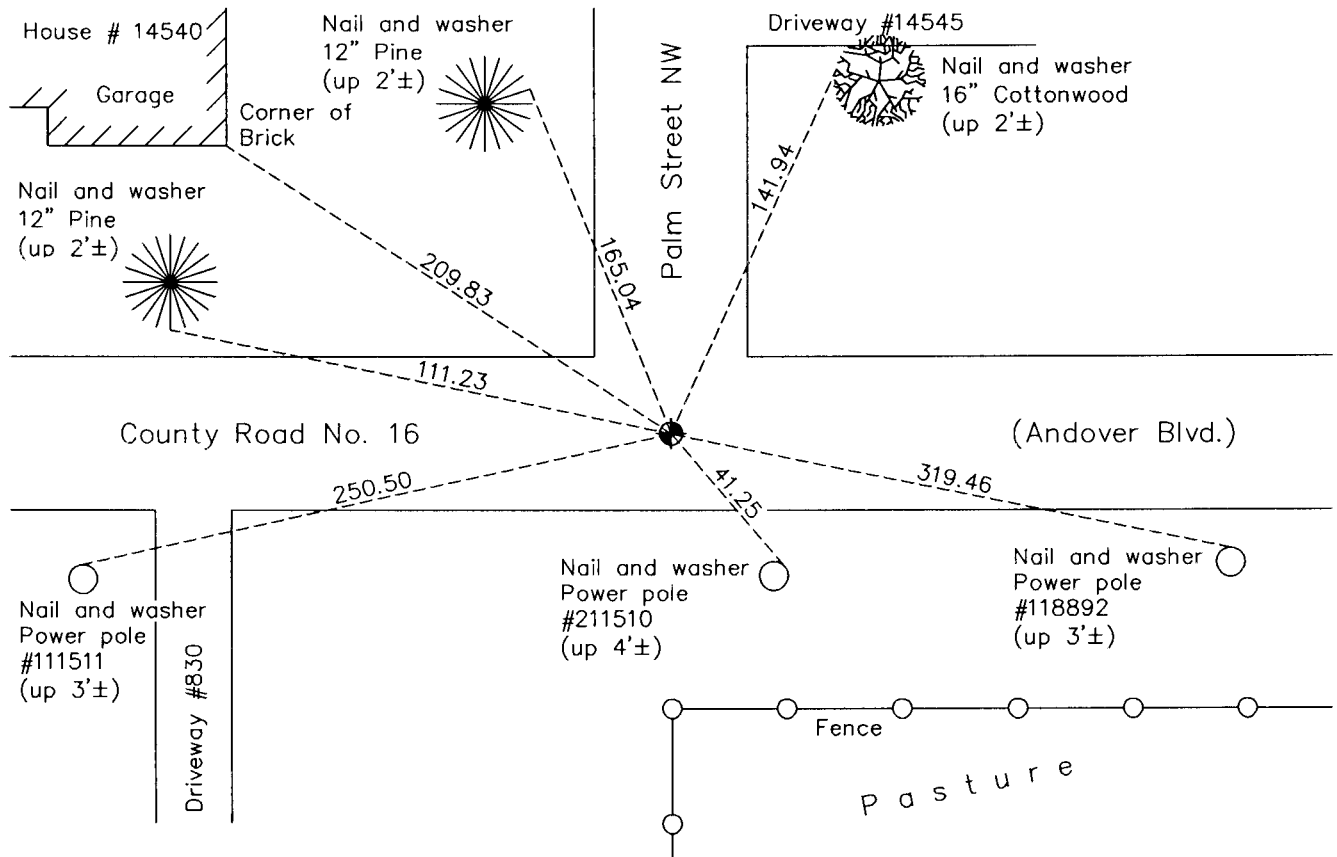
East 1/4 Corner of Sec. 26 Township 32 Range 24

On the 4th day of January, 1962, the described corner was evidenced by a 1/2" iron pipe

and to perpetuate the location of said corner, at the exact location thereof, a permanent marker was placed consisting of a cast iron monument

AND on the ___ day of June, 2012, said permanent marker was raised to the surface after overlay of road was completed

Updated reference ties are as shown below.



Revision Date
12/17/12

N.A.D. 1983 Coordinates
(1996 Adjustment)

County Project Coordinates	
Northing	172252.3378
Easting	495127.6276
Date	10/02/00

I hereby certify that this United States public land survey monument record is correct and complete to the best of my knowledge and belief.

Larry D. Hoium Date 12/17/12
 Larry D. Hoium, Anoka County Surveyor
 Minnesota License Number 18165