

# CERTIFICATE OF LOCATION OF GOVERNMENT CORNER

County of Anoka

State of Minnesota

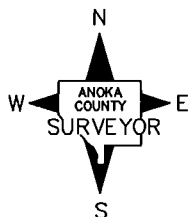
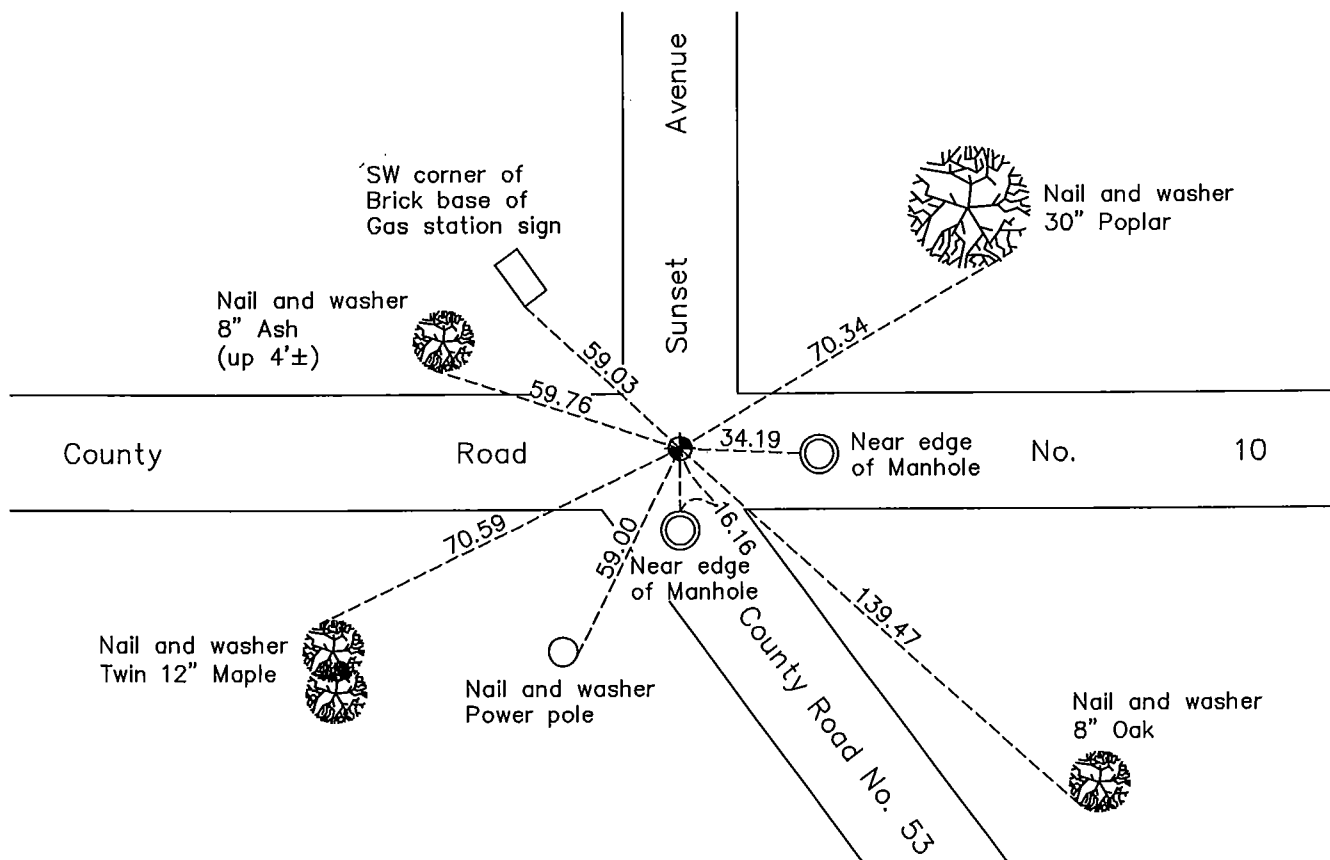
## Northeast Corner of Sec. 25 Township 31 Range 23

On the 19th day of June, 1954, the described corner was evidenced by a 1 1/2" solid iron bar

and to perpetuate the location of said corner, at the exact location thereof, a permanent marker was placed consisting of a cast iron monument

AND on the 10th day of August, 2009, said permanent marker was raised to the surface and the ties were updated

Updated reference ties are as shown below.



Revision Date  
4/23/12

N.A.D. 1983 Coordinates  
(1996 Adjustment)

County Project Coordinates	
Northing	<u>142922.1174</u>
Easting	<u>531921.1990</u>
Date	<u>6/25/98</u>

I hereby certify that this United States public land survey monument record is correct and complete to the best of my knowledge and belief.

*Larry D. Hoium* Date 4/23/12

Larry D. Hoium, Anoka County Surveyor  
Minnesota License Number 18165