

CERTIFICATE OF LOCATION OF GOVERNMENT CORNER

County of Anoka

State of Minnesota

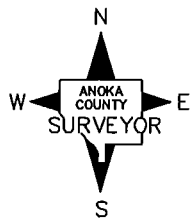
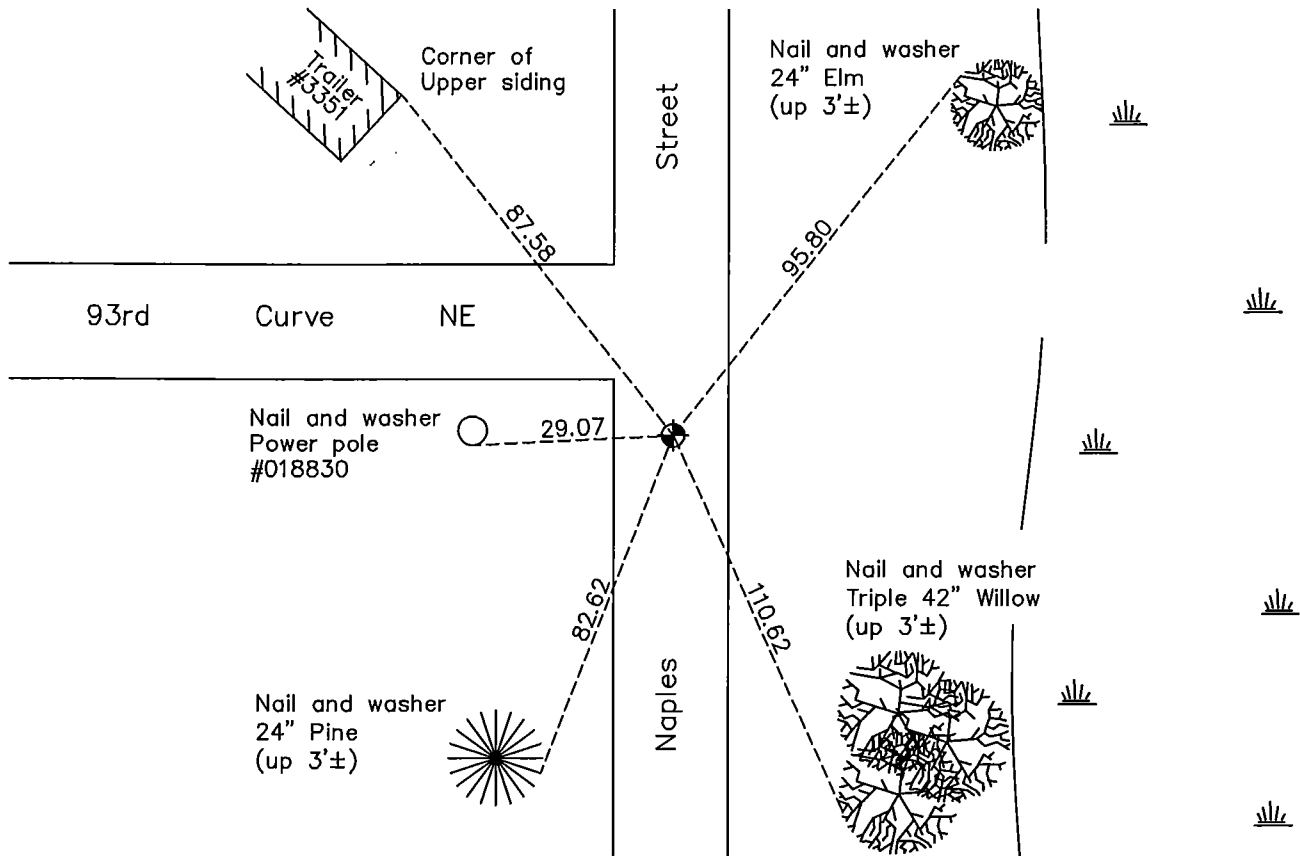
Northwest Corner of Sec. 35 Township 31 Range 23

On the ____ day of October, 1960, the described corner was evidenced by an iron pipe

and to perpetuate the location of said corner, at the exact location thereof, a permanent marker was placed consisting of a cast iron monument

AND on the 12th day of May, 2011, said permanent marker was removed for road construction. Replaced with extendible cast iron monument on March 28, 2012 and updated ties.

Updated reference ties are as shown below.



N.A.D. 1983 Coordinates
(1996 Adjustment)

County Project Coordinates	
Northing	137785.5116
Easting	521269.6742
Date	10/28/98

I hereby certify that this United States public land survey monument record is correct and complete to the best of my knowledge and belief.

Larry D. Hoium Date 5/09/12

Larry D. Hoium, Anoka County Surveyor

Minnesota License Number 18165

Revision Date
5/09/12