

CERTIFICATE OF LOCATION OF GOVERNMENT CORNER

County of Anoka

State of Minnesota

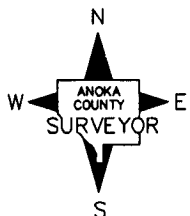
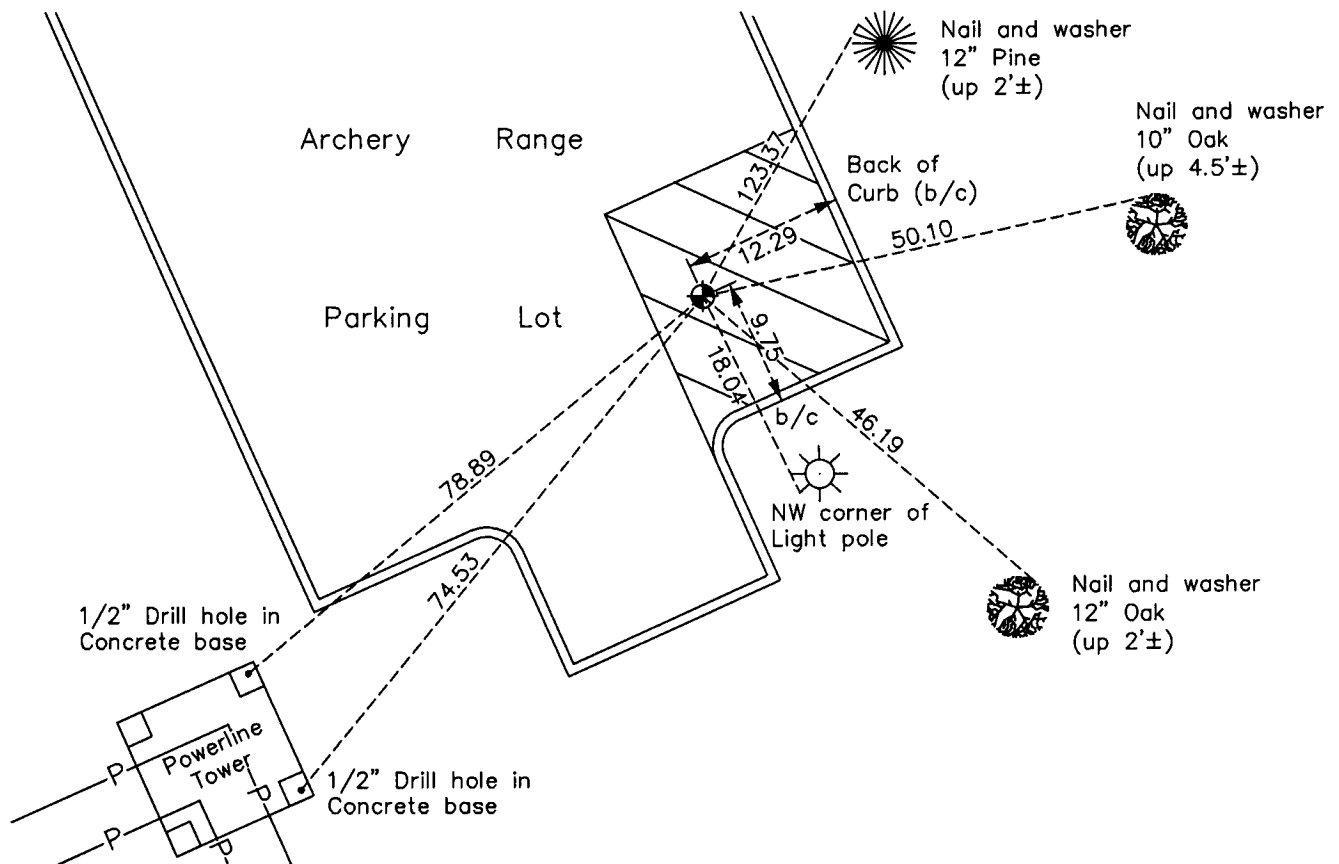
North 1/4 Corner of Sec. 2 Township 31 Range 24

On the 10th day of May, 1960, the described corner was evidenced by a 1 1/2" iron pipe up 0.5'

and to perpetuate the location of said corner, at the exact location thereof, a permanent marker was placed consisting of a shortened cast iron monument set in concrete

AND on the 16th day of March, 2010, said permanent marker was found flush with blacktop and the ties were updated

Updated reference ties are as shown below.



Revision Date
4/16/10

N.A.D. 1983 Coordinates
(1996 Adjustment)

County Project Coordinates	
Northing	164407.8501
Easting	492364.6231
Date	11/17/00

I hereby certify that this United States public land survey monument record is correct and complete to the best of my knowledge and belief.

Larry D. Hoium Date 4/16/10

Larry D. Hoium, Anoka County Surveyor

Minnesota License Number 18165

HISTORY OF GOVERNMENT CORNER

Page No. 4

County of Anoka

State of Minnesota

North 1/4 Corner of Sec. 2 Township 31 Range 24

CORNER HISTORY:

May 10, 1960 - Found 1 1/2" iron pipe up 0.5'. Established ties to monument.

June 18, 1964 - Found 1 1/2" iron pipe and updated ties.

July 22, 1966 - Found 1 1/2" iron pipe and updated ties.

December 10, 1968 - Found 1" iron pipe up 1.0'± and updated ties.

August 6, 1970 - Replaced 1" iron pipe up 0.6'± with a cast iron monument up 0.1'±. Updated ties.

July 1, 1974 - Found cast iron monument and updated ties.

June 14, 1977 - Found cast iron monument and updated ties.

June 20, 1980 - Found cast iron monument and updated ties.

June 17, 1986 - Found cast iron monument and updated ties.

May 30, 1991 - Found cast iron monument and updated ties.

August 24, 1994 - Found cast iron monument and updated ties.

November 17, 2000 - Found cast iron monument and established NAD 1983 (1996 Adjustment) Anoka County Project Coordinates by Static GPS methods. Updated ties.

April 2, 2001 - Set construction (transit) ties and removed cast iron monument prior to parking lot construction.

November 4, 2003 - Set top section of cast iron monument in concrete and flush with surface after parking lot construction using construction ties. Updated ties.

March 16, 2010 - Found cast iron monument flush with blacktop and updated ties.